



Delphi Archaeological Site

FROM EUR **750** per person

VALIDITY 2019-2020  
NOVEMBER 01 - MARCH 22

- Price quoted in Euro Dollar (EUR)
- Seasonal Departure
- Minimum 02 Adults
- Land Tour Package Only

#### PRICE INCLUSIONS

- ✓ All transfers as mentioned in the itinerary
- ✓ 7 nights hotel with daily breakfast
- ✓ Ferry tickets Piraeus – Santorini - Piraeus (Economy Class, free seating)
- ✓ Sightseeing tour as per itinerary with English Speaking local guide

#### PRICE EXCLUSIONS

- ✗ Airfare & applicable airport taxes
- ✗ Personal Incidental Expenses
- ✗ Overnight City Tax Pay direct to hotel:  
3\* hotel – EUR1.5 per room night  
4\* hotel – EUR3 per room night
- ✗ Gratuities to driver & guide: Suggest EUR5 per person per day – pay direct

#### REMARKS

- ❖ Tour prices and itinerary quoted are subject to change
- ❖ Peak season surcharge may apply (To be advised upon booking)
- ❖ Subject to room availability
- ❖ Payment in Ringgit Malaysia (RM), subject to currency exchange fluctuation
- ❖ No refund for un-utilized tours
- ❖ Terms & Conditions Apply

#### VISA

Tourist visa is not required for Malaysia passport holder for stay up to 90days.

#### TRAVEL INSURANCE



Travel Insurance provider:  
AIG Malaysia Insurance Berhad

#### Departure Dates:

Nov01-Dec17,2019 : Every Monday, Tuesday, Friday, Saturday/ Dec18, 21, 22, 25, 29,2019

Jan03-Mar17,2020 : Every Monday, Tuesday, Wednesday, Thursday/Mar18, 19, 21, 22,2020

Hotel Category	ADULT		
	TWIN SHARE	TRIPLE SHARE	SINGLE ROOM
3★	750	630	1060
4★	850	780	1230

Block Out Dates : Nov10, Dec25,26,2019 ; Jan01, Mar20,2020

Hotel used (or similar class)

Hotel Cat.	Athens (4N)	Kalambaka (1N)	Santorini (2N)
3★	Museum	Orfeas	Nikolas
4★	Athens Avenue	Divani	Theoxenia

#### DAY ITINERARY

##### 01 ATHENS – ARRIVAL

Upon arrival in Athens, meet and transfer to hotel. Rest of the day at leisure.

##### 02 ATHENS

Guided Athens sightseeing tour. Pass by **Panathenaic Stadium**, the **Temple of Olympian Zeus**, **Hadrian's Arch**, the **Parliament** and the **Memorial of the Unknown Soldier**, the **Academy**, the **University**, the **National Library**, the **Parthenon**, **Erectheion** and the **Temple of Athena Nike**. Continue to visit **Acropolis** and **Acropolis Museum**. Afternoon at leisure.

##### 03 ATHENS - DELPHI - KALAMBAKA

Morning proceed to **Delphi**. Visit **Castalia Spring**, the main **Archaeological Site**. Continue journey to **Kalambaka**.

##### 04 KALAMBAKA-METEORA-ATHENS

Depart **Meteora**, The UNESCO World Heritage Site. Home to more than 20 rock monasteries. On the way back to Athens you will have the opportunity to stop in the coastal town of Thermopylae near Lamia. Arrive in **Athens** early afternoon. The rest of the day at leisure.

##### 05 ATHENS – SANTORINI

Morning transfer to Piraeus Port and depart to **Santorini** (07:25-15:10). Arrival and transfer to hotel. The rest of the day at leisure.

##### 06 SANTORINI

Whole day at leisure. Walk in the paths of Fira, the picturesque capital of Santorini. Enjoy sandy beaches and beautiful sunset.

##### 07 SANTORINI – ATHENS

Transfer to the port to embark the ferry to **Pireus port** (15:30-23:25). Arrival and transfer to hotel in Athens.

##### 08 ATHENS

Depart Athens and transfer to Airport.

## Hotel Description (guideline only)

## ATHENS

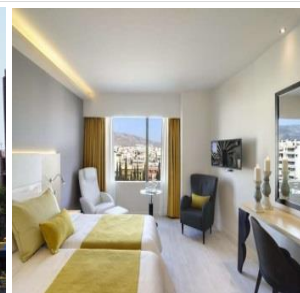
**MUSEUM HOTEL – 3★**

Bouboulinas 16 – 10682, Athens, Greece

Tel: +30 210 3805611

<https://www.museum-hotel.gr/>

93 rooms - central location next to the National Archaeological Museum. The nearest metro is just a few minutes' walk away. Plaka, Acropolis, Monastiraki, and Syntagma Square can all be reached on foot or by metro.

**ATHENS AVENUE – 4★**

Syngrou Avenue 182, Kallithea, Athens

Tel: +30- 21-11095600

<https://www.athensavenuehotel.gr/>

94 rooms - Located on Sygrou Avenue, main streets of Athens. Just outside the hotel, there is a bus station connecting you to Syntagma Square and the center of Athens. 1 km from National Museum of Contemporary Art.

## KALAMBAKA

**HOTEL ORFEAS – 3★**

58 Pindoy Street Kalambaka, Kalampaka 422 00, Greece

Tel: +30 2432 077444

<http://www.hotel-orfeas.gr/>

110 rooms - Located amidst a garden in Kalampaka. A bus stop is 50 m away, while Kalampaka Centre lies within 500 m. Meteora Monasteries are at a distance of 3 km.

**DIVANI METEORA HOTEL – 4★**

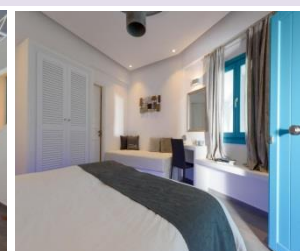
422 00 Kalampaka, Greece

Tel: +30+24320 23 330

<https://divanimeteorahotel.com/>

165 rooms - located in Kalambaka, central Greece, just 1km from the incredible Meteora monasteries.

## SANTORINI

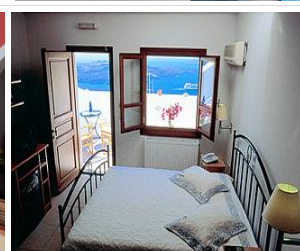
**HOTEL NIKOLAS - 3★**

Karterados 847 00 Santorini - Greece

Tel.: +30 22860 23912 & 24938

<http://www.nikolashotel.gr/>

42 rooms - Located just 2km away (S-SE) from Fira, the capital town of Santorini surrounded by vineyards. Santorini Airport is less than 5 km away.

**THEOXENIA BOUTIQUE HOTEL- 4★**

Fira Town, Caldera (Via D'oro), 84700 Santorini Island, Cyclades- Greece

Tel: +30-22860-22740

<http://www.theoxenia.net/>

9 rooms - Located centrally, in the famous Caldera cliff side setting, it overlooks the ocean and the Volcano of Santorini.



## TERMS & CONDITIONS

Passengers are deemed to have read, understood and accepted the following:-

### Package Price

Quoted in Euro Dollar (EUR) and payment in Ringgit Malaysia (RM), subject to currency fluctuation. Validity of prices is seasonal and subject to change without prior notice. Child rates are applicable when child are occupying a room with at least two adult.

### Deposit & Payment

A deposit of RM500 per person is required when booking is made. Receipt for deposit is valid for three (3) months from the date of issue. The deposit forms part of your final payment. Balance (final payment) must be made 45 days prior to departure. Failure to comply with this may result in an automatic cancellation of your reservations and forfeiture of your deposit.

### Accommodation

Bedding varies from hotel to hotel, but the following usually applies:-

Single Occupancy: comprises 1 King bed                      Double Occupancy: comprises 1 Queen/King Bed

Twin Occupancy: comprises 2 Double Beds                      Triple and Quad Occupancy: comprises 2 Double Beds

If a rollaway bed is required, an extra charge applies. Most hotels will not put more than one rollaway in a room. Baby cots can be requested in advance and if extra charge applies, passenger must pay directly to hotel.

### Gratuities

Guideline: EUR5 per person per day for driver and guide.

### Hotel Check-In/Out Times

Standard check-in time is after 1500hrs and check-out is before 1100hrs

### Amendment Charges

An administrative fee of RM100 will be charged for each subsequent amendment made after the confirmation. Any other cost arising from the amendment will be borne by the passenger. No amendment can be made within 15 days prior to departure. A change on the entire booking is considered a cancellation and is subject to cancellation charges.

### Cancellation Charges

You may cancel your booking at any time. Cancellation must be made in writing to avoid any misunderstanding. If your cancellation is received by the Company more than 30 days prior to your departure, an administration fee of RM100 per person will be levied. If your notice of cancellation is received fewer than 30 days prior to departure, the following cancellation charges will apply:

### Cancellation Received Cancellation Fee

More than 45days prior to departure : Deposit Forfeited

Between 44 to 30 days prior to departure: 10% of tour price

Between 29 to 01 day prior to departure: 50% of tour price

Arrival day or on tour or no-show : 100% of tour price

### Refund

No refund will be made for unused tickets or any other unutilized portion of the inclusions. Request for refund as a result of changes to the package must be made in writing and an administrative fee of RM100 per person applies in addition to the supplier's cancellation fee. Refunds are payable only through the original booking agent.

### General Information

The company reserves the right to substitute or alter similarly-priced accommodation, services and itineraries when necessary and there shall be no refund in such situation.

### Responsibility

The company acts only as an agent and does not manage, control or operate any suppliers of services. The Company assumes no liability for any loss, injury, damage, accident, delay or irregularity which may be caused by these events – Acts of God, natural disasters, civil & military disorders, industrial disputes and any cause beyond the reasonable control of any company or person engaged in carrying out the arrangements made.

### Reservations

All reservations are subject to space availability and confirmation.

### Customer's Responsibilities

- Travel Insurance – to cover medical expenses arising through illness or accident prior to or during the holiday, and loss of the holiday and loss of holiday monies, cancellation or curtailment of holiday for insurable reasons.
- Passport & Visas – to be in possession of a valid passport and whatever necessary immigration documentation may be required by the country(ies) for the duration of the holiday.

### Visa

Tourist visa is not required for Malaysian passport holder for a stay of 90 days.