

# 4D3N TOKYO HIGHLIGHTS

Tokyo / Mt. Fuji



## JAPAN

FROM **RM2390**pp

**VALIDITY** 2019  
JAN01 – MAR31

### SEAT-IN-COACH TOUR

- Price Per Person in RM
- Daily Departure
- Minimum 02 Adults
- Land Tour Package Only

### PRICE INCLUSIONS

- ✓ Return airport - hotel transfer by shared van
- ✓ 03nights hotel accommodation with daily breakfast
- ✓ Sightseeing tour as per itinerary with English speaking local guide/commentary

### PRICE EXCLUSIONS

- ✗ Airfare & applicable airport taxes
- ✗ Personal Incidental Expenses
- ✗ Gratuities to guide & driver : suggest JPY1,500 per person per day – pay direct

### REMARKS

- ❖ Tour prices and itinerary quoted are subject to change
- ❖ Peak season surcharge may apply (To be advised upon booking)
- ❖ Subject to room availability
- ❖ No refund for un-utilized tours or services
- ❖ Terms & Conditions Apply

### VISA

Japan visa exemption only applies to Malaysia Nationality holding ordinary biometric passport with embedded microchip that is compliant with ICAO standards for a stay up to 90days

### TRAVEL INSURANCE

**AIG** Travel Insurance provider:  
**AIG Malaysia Insurance Berhad**

Mt Fuji

ADULT			CHILD [2-11yrs]	Extension Night with Breakfast Per Room Night			SAT & Eve of Public Holiday Surcharge(★) Per Person Per Night
Twin Share	Triple Share	Single Room	Extra Bed	Twin	Triple	Single	
<b>3★ SHINJUKU LISTEL</b>							
<b>2390</b>	<b>2390</b>	<b>2890</b>	<b>1730</b>	675	1010	500	60
<b>4★ IBIS SHINJUKU</b>							
<b>2670</b>	<b>2670</b>	<b>3330</b>	<b>1990</b>	855	1280	650	60
<b>5★ THE NEW OTANI</b>							
<b>3030</b>	<b>3030</b>	<b>4250</b>	<b>2350</b>	1095	1480	955	300

(★) Sat & Eve of Public Holidays (Subject to change)  
Jan 01,05,12,13,14,19,26 // Feb02,09,10,11,16,23 // Mar02,09,16,20,21,23,30

### DAY ITINERARY

#### 01 TOKYO – ARRIVAL

Arrive Haneda\* Airport, transfer to hotel by shared van.

\*Narita Airport transfer: surcharge RM 220(Adult), RM110(Child) per person per way

#### 02 TOKYO

**TOKYO MORNING BUS TOUR (Approx. 4Hours)**

(Operate: Daily except Feb17, Mar03)

07:30-08:30m – own arrangement to **Hamamatsucho Bus Terminal**

09:00 am - depart for city tour: ■Tokyo Tower (30mins – includes main deck 150m, additional admission fee access to Special Observatory) ■ Imperial Palace Plaza (10mins photo stop, closed on Jan02) ■Sensoji Temple & Nakamise Shopping Street (45mins) ■ Tour End at Tokyo Station Merunouchi South Exit.

#### 03 TOKYO

**ONE DAY MT. FUJI/ HAKONE TOUR-RETURN BY SHINKANSEN (Approx. 10Hours)**

(Operate: Daily except Feb17, Mar03)

Own arrangement to meeting point (to be advise upon confirmation)

■ Mt. Fuji 5<sup>th</sup> Station -2300meters above sea level (30mins stop) ■ Lunch (50mins) ■Lake Ashi Crusie – from Kojiri Terminal to Hanone-en) ■Mt. Komagatake Ropeway – take a 7minute ride to the peak (50mins) ■Hakone-an(Oshima cheery best tree viewing time in April) ■ Odawara Station, board the Kodama Shinkansen to Tokyo in the non-reserved section ■ Tour ends at Shin-Yokohama/ Shinagawa /Tokyo Station.

*Note: The tour will not be cancelled or refunded even if Mt. Fuji is not fully visible due to weather conditions.*

#### 04 TOKYO – DEPARTURE

Depart Tokyo, transfer to Haneda\* airport by shared van

\*Narita Airport transfer: surcharge RM 220(Adult), RM110(Child) per person per way

## Hotel Description (for guideline only)



### **LISTEL SHINJUKU HOTEL - 3★**

5-3-20, Shinjuku, Shinjuku-ku, Tokyo, Japan 160-0022

Tel: +81-3-3350 0123

<http://www.listel.co.jp/en>

263 rooms - Shinjuku Train Station is a 20-minute walk from the hotel. Shinjuku Gyoen National Garden, the Kabukicho area and Isetan Department Store are all about a 10-minute walk away.



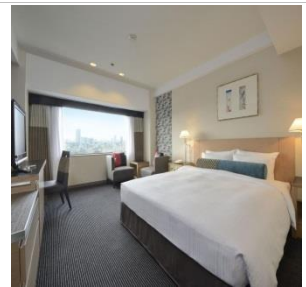
### **IBIS SHINJUKU - 4★**

7-10-5 Nishi-Shinjuku, Shinjuku-Ku, 160-0023-Tokyo Japan

Tel: +81-3-3361-1111

<http://www.ibis.com/gb/hotel-8620-ibis-tokyo-shinjuku/index.shtml>

206 rooms - Located in the heart of Tokyo's cosmopolitan and popular Shinjuku district. The hotel is just a 3 minute walk to the Tokyo Metro Shinjuku train station and JR Shinjuku Station



### **THE NEW OTANI TOKYO - 5★**

4-1 Kioi-cho, Chiyoda-ku, Tokyo 102-8578, Japan

81-3-3265-1111

<https://www.newotani.co.jp/en/tokyo/>

1,479 rooms (Executive House Zen: 87, The Main: 556, Garden Tower: 836) - Situated in central Tokyo. Less than a 10-minute walk from 5 subway lines. 300m from Akasaka-Mitsuke Subway Station Less than a 10-minute subway ride to Ginza, Shibuya & Shinjuku areas.

## TERMS & CONDITIONS

Passengers are deemed to have read, understood and accepted the following:-

### Package Price

Quoted in Ringgit Malaysia (RM) and subject to exchange rate fluctuations. Validity of prices is seasonal and subject to change without prior notice. Child rates are applicable when child is occupying a room with at least two adults.

### Deposit & Payment

A deposit of RM500 per person is required when booking is made. Receipt for deposit is valid for three (3) months from the date of issue. The deposit forms part of your final payment. Balance (final payment) must be made 15 days prior to departure. Failure to comply with this may result in an automatic cancellation of your reservations and forfeiture of your deposit.

### Accommodation

Bedding varies from hotel to hotel, but the following usually applies:-

Single Occupancy: comprises 1 Queen

Double Occupancy: comprises 1 Queen /King Bed

Twin Occupancy: comprises 2 Single Beds

Triple Occupancy: comprises 3 Single / 1 Double + Rollaway Bed

If a rollaway bed is required, an extra charge applies. Most hotels will not put more than one rollaway in a room. Baby cots can be requested in advance and if extra charge applies, passenger must pay directly to hotel.

**Gratuities:** JPY1,500 per person per day for driver and guide.

**Hotel Check-In/Out Times :** Standard check-in time is after 1500hrs and check-out is before 1100hrs

### Amendment Charges

An administrative fee of RM100 will be charged for each subsequent amendment made after the confirmation. Any other cost arising from the amendment will be borne by the passenger. No amendment can be made within 15 days prior to departure. A change on the entire booking is considered a cancellation and is subject to cancellation charges.

### Cancellation Charges

You may cancel your booking at any time. Cancellation must be made in writing to avoid any misunderstanding. If your cancellation is received by the Company more than 30 days prior to your departure, an administration fee of RM100 per person will be levied. If your notice of cancellation is received fewer than 30 days prior to departure, the following cancellation charges will apply:

### Cancellation Received Cancellation Fee

Between 29 to 16 days prior to departure: Forfeiture of the Deposit

Between 15 to 08 days prior to departure: 50% of tour price

Between 7 days to departure day (No-Show): 100% of tour price

### Refund

No refund will be made for unused tickets or any other unutilized portion of the inclusions. Request for refund as a result of changes to the package must be made in writing and an administrative fee of RM100 per person applies in addition to the supplier's cancellation fee. Refunds are payable only through the original booking agent.

### General Information

The company reserves the right to substitute or alter similarly-priced accommodation, services and itineraries when necessary and there shall be no refund in such situation.

### Responsibility

The company acts only as an agent and does not manage, control or operate any suppliers of services. The Company assumes no liability for any loss, injury, damage, accident, delay or irregularity which may be caused by these events – Acts of God, natural disasters, civil & military disorders, industrial disputes and any cause beyond the reasonable control of any company or person engaged in carrying out the arrangements made.

### Reservations

All reservations are subject to space availability and confirmation.

### Customer's Responsibilities

- Travel Insurance – to cover medical expenses arising through illness or accident prior to or during the holiday, and loss of the holiday and loss of holiday monies, cancellation or curtailment of holiday for insurable reasons.
- Passport & Visas – to be in possession of a valid passport and whatever necessary immigration documentation may be required by the country(ies) for the duration of the holiday.

### Visa Application

Japan visa exemption only applies to Malaysia Nationality holding ordinary biometric passport with embedded microchip that is compliant with ICAO standards for a stay up to 90days