

Genting Dream ~ 4 Nights Monday Cruise

2nd Pax RM 0 | 40% Off | Suite Room Promomotion



Fares are per person, cruise-only, based on double occupancy quoted in [Malaysia Ringgit 马币](#)

Version : 13 Sep 2019

4Nights (Mon) Singapore - Melaka - Phuket - Singapore 4晚 (星期一) 新加坡-马六甲-普吉岛-新加坡		Low Season Jan 27, 2020	Low Season Jan 27, 2020	Low Season Jan 27, 2020		
Sailing Date:						
Promotion:		2ND PAX RM 0	WEEKDAYS 40% OFF	SUITE ROOM PROMOTION (15% OFF)		
Booking Period Until:		31 Oct 19	03 Apr 20	03 Apr 2020		
Price Program:		GDR WINTER 19 B1G1 / GROUP	GDR WINTER 2019 - WEEKDAYS 40% OFF	GDR WINTER NEW SUITES PROMO		
Cabin Descriptions		Max Occupancy	Low	Low		
			1st	2nd	1st / 2nd	1st
DPV	Palace Villa 皇宫廷苑别墅	6	NIL	NIL	16,794	
DPP	Palace Penthouse 皇宫行政套房	6	NIL	NIL	13,532	
DDS	Palace Deluxe Suite 皇宫豪华套房	4	NIL	NIL	7,709	
DSA DPS	Palace Suite 皇宫套房	4	NIL	NIL	5,679	
BDA BDS	Balcony Deluxe 豪华露台客房	4	4321	0	2593	NIL
BSA BSS	Balcony 露台客房	4	3952	0	2371	NIL
OSS ISS	Oceanview 海景客房	4	3554	0	2132	NIL
ISA ISS	Interior 内侧客房	4	2786	0	1672	NIL
The 3rd/ 4th passenger in the same cabin 同客舱内的第3或4乘客			50% of promotional rate of 1st Pax	50% of promotional rate of 1st Pax	50% of promotional rate of 1st Pax	
Single Fare / 单人价格			Not Applicable	150% of Promotional rate of 1st Pax	150% of Promotional rate of 1st Pax	
Infant (6-24 month) / 婴儿价格 (6-24月)			25% of 1st pax fare upon 2 paying pax	25% of 1st pax fare upon 2 paying pax	25% of 1st pax fare upon 2 paying pax	
Cruise Port Charges 港口费 (Subject to Change)			RM 199			
Gratuities Fee/Per person per night 船上小费/每人每晚			SGD 26 for Suite and above (Per person per night 每人每晚) SGD 21 for Balcony Deluxe Stateroom or below (Per person per night 每人每晚) No gratuities charges for children below 2-years-old			
Return Kulala Lumpur/ Singapore Check in Port Transfer 来回吉隆坡/新加坡登船码头接送			RM 160 (Van / Bus Persiaran Depends on group size 交通工具安排取决于人数而定)			

The Palace Privileges ~ As guests of The Palace (DPV ~ DPS), you are entitled to exclusive privileges throughout the cruise:
"The Palace 皇宫"非凡礼遇 ~ 作为"The Palace 皇宫"的贵宾 (DPV ~ DPS), 您可以享用邮轮的尊崇礼遇

On your arrival 您的专属通道:

- Access to VIP lounge at the terminal 享用设于码头内的VIP贵宾休息专区
- Priority check-in with butler assistance 提供管家协助优先办理登船手续
- Fast-track security clearance 享用特快安检通道
- Priority luggage check-in and check-out with express delivery
- 优先寄存行李、享用行李快递到房及办理离船手续

When you dine 您的味蕾盛宴:

- Exclusive access to The Palace Restaurant with complimentary premium dining 于皇宫餐厅免费享用高级美食
- Set meals at specialty restaurants 于特色餐厅品尝精美套餐
- Meal options at Crystal Life (TM) Cuisine 于水晶生活享用佳肴美点
- Premium beverage package for all bars, lounges, and restaurants
- 于船上所有酒吧、酒廊及餐厅享用高级酒水畅饮套餐
- Priority booking for Table and Vintage Room 优先预订"主厨餐桌"及星宴
- Exclusive dining events 专享盛宴派对
- Complimentary in-suite dining 于套房内享受免费送餐服务

In your Suite 您的尊贵套住宿:

- 24-hour butler concierge 24小时管家礼宾服务
- Standard Wifi package throughout cruise 全程免费无线上网服务 (标准套餐)
- Fine Italian bed linen, duvet, towels, and bathrobes from Frette™
- 意大利品牌Frette (TM)的高级床单、被褥、毛巾及浴袍
- Nespresso (TM) machine with gourmet coffee and tea Nespresso (TM) 咖啡机, 精品咖啡及茶饮
- Welcome treats 迎宾饮品及小食
- Pressing service 免费熨衣服务

When you explore 您的启迪体验:

- Priority access to shows and movies 优先预订大型表演及电影门票
- Dedicated Palace Kids program 专为"The Palace 皇宫"儿童旅客而设的活动
- Bespoke enrichment program, "The Connoisseurs Circle" 量身定制的"鉴赏家系列"增益活动
- Choice of select Palace or general shore excursions per port
- 于每个港口免费参加"The Palace 皇宫"精选岸上观光团或常规岸上观光团
- City shuttle transfers 免费市内接驳交通 (指定港口)

4 Nights Singapore - Melaka - Phuket - Singapore			
Day	Port	Arrive(Local)	Depart(Local)
Monday 27 Jan	Singapore	-	2100
Tuesday 28 Jan	Melaka	0900	1800
Wednesday 29 Jan	Phuket (Patong Bay)	1500 (1400)	-
Thursday 30 Jan	Phuket (Patong Bay)	-	1200 (1100)
Friday 31 Jan	Singapore	1500	-

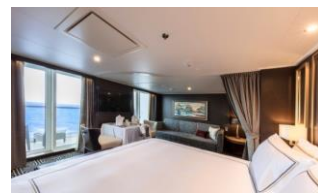
() Local Time **Last Boarding time 1930**



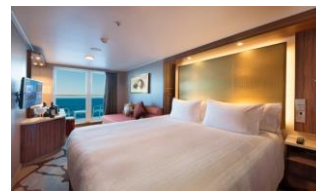
Palace Villa
皇宫庭苑别墅



Palace Penthouse
皇宫行政套房



Palace Suite
皇宫套房



Balcony
露台客房



Oceanview
海景客房



Interior
内侧客房

TERMS & CONDITIONS

1. Deposit 50% of cruise fee, full payment one month before departure. 100 % Deposit for Peak Season.
2. Infants below 6 months at the time of sailing are not allowed to cruise;
A passenger under 18 years of age must be accompanied in the same cabin by a passenger 18 years or older.
3. Passage for a pregnant woman will only be permitted before her 24th week of pregnancy at the time of sailing.
4. Cruise Check in time will commence 4 hours before ship's departure; Gate closes one hour before departure.
5. Dream Cruises reserves the right to cancel and/ or substitute any information or any scheduled port of call/ itinerary/ price/ programmer at any time for any reason whatsoever without notice.

Genting Dream ~ 4 Nights Monday Cruises

2nd Pax RM 0 | 40% Off | Generic Suite Deal



Fares are per person, cruise-only, based on double occupancy quoted in **Malaysia Ringgit 马币**

Version : 14 Sep 2020

4Nights (Mon) Singapore - Melaka/ Port Dickson - Phuket - Phuket - Singapore 4晚 (星期一) 新加坡-马六甲/波德申港-普吉岛-普吉岛-新加坡		Low Season Aug 10, 2020	Low Season Aug 10, 2020	Low Season Aug 10, 2020
Sailing Date		Aug 2020		
Promotion:		2ND PAX RM 0	40% OFF	GENERIC SUITE DEAL
Booking Period Until:		31 Oct 2019	18 Nov 2020	18 Nov 2020
Price Program:		GDR SUMMER 2020 B1G1 / GROUP	GDR SUMMER 2020 - WEEKDAYS 40% OFF	GDR 2020 SUMMER - GENERIC SUITE DEAL
Cabin Descriptions		Max Occupancy	Low 1st / 2nd	Low 1st / 2nd
DPV	Palace Villa 皇宫庭院别墅	6	NIL	17937
DPP	Palace Penthouse 皇宫行政套房	6	NIL	14453
DDS	Palace Deluxe Suite 皇宫豪华套房	4	NIL	8234
DSA DPS	Palace Suite 皇宫套房	4	NIL	6065
BDA BDS	Balcony Deluxe 豪华露台客房	4	5,162 0	NIL
BSA BSS	Balcony 露台客房	4	4,554 0	NIL
OSA OSS	Oceanview 海景客房	4	3,947 0	NIL
ISA ISS	Interior 内侧客房	4	3,340 0	NIL
The 3rd/ 4th passenger in the same cabin 同客舱内的第3或4乘客		50% of promotional rate of 1st Pax		50% of promotional rate of 1st Pax
The 5th/ 6th passenger in the same cabin 同客舱内的第5或6乘客		Not Applicable		50% of promotional rate of 1st Pax
Single Fare / 单人价格		Not Applicable		150% of promotional rate of 1st Pax
Infant (6-24 month) / 婴儿价格 (6-24月)		25% of 1st pax fare upon 2 paying pax		
Cruise Port Charges 港口费 (Subject to Change)		RM 222		
Gratuities Fee/Per person per night 船上小费/每人每晚		SGD 26 for Suite and above (Per person per night 每人每晚) SGD 21 for Balcony Deluxe Stateroom or below (Per person per night 每人每晚) No gratuities charges for children below 2-years-old		
Return Kulala Lumpur/ Singapore Check in Port Transfer 来回吉隆坡/新加坡登船码头接送		RM 160 (Van / Bus Persiaran Depends on group size 交通工具安排取决于人数而定)		

The Palace Privileges ~ As guests of The Palace (DPV ~ DPS), you are entitled to exclusive privileges throughout the cruise:

"The Palace 皇宫"非凡礼遇 ~ 作为"The Palace 皇宫"的贵宾 (DPV ~ DPS), 您可以享用邮轮的尊崇礼遇

On your arrival 您的专属通道:

- Access to VIP lounge at the terminal 享用设于码头内的VIP贵宾休息专区
- Priority check-in with butler assistance 提供管家协助优先办理登船手续
- Fast-track security clearance 享用特快安检通道
- Priority luggage check-in and check-out with express delivery
- 优先寄存行李、享用行李快速送到房及办理离船手续

When you dine 您的味蕾盛宴:

- Exclusive access to The Palace Restaurant with complimentary premium dining 于皇宫餐厅免费享用高级美食
- Set meals at specialty restaurants 于特色餐厅品尝精美套餐
- Meal options at Crystal Life (TM) Cuisine 于水晶生活享用佳肴美点
- Premium beverage package for all bars, lounges, and restaurants
- 于船上所有酒吧、酒廊及餐厅享用高级酒水畅饮套餐
- Priority booking for Table and Vintage Room 优先预订"主厨餐桌"及星宴
- Exclusive dining events 专享盛宴派对
- Complimentary in-suite dining 于套房内享受免费送餐服务

In your Suite 您的尊贵套房:

- 24-hour butler concierge 24小时管家礼宾服务
- Standard Wifi package throughout cruise 全程免费无线上网服务 (标准套餐)
- Fine Italian bed linen, duvet, towels, and bathrobes from Frette™
- 意大利品牌Frette (TM)的高级床单、被褥、毛巾及浴袍
- Nespresso (TM) machine with gourmet coffee and tea Nespresso (TM) 咖啡机, 精品咖啡及茶饮
- Welcome treats 迎宾饮品及小食
- Pressing service 免费熨衣服务

When you explore 您的启迪体验:

- Priority access to shows and movies 优先预订大型表演及电影门票
- Dedicated Palace Kids program 专为"The Palace 皇宫"儿童旅客而设的活动
- Bespoke enrichment program, "The Connoisseurs Circle" 量身定制的"鉴赏家系列"增益活动
- Choice of select Palace or general shore excursions per port
- 于每个港口免费参加"The Palace 皇宫"精选岸上观光团或常规岸上观光团
- City shuttle transfers 免费市内接驳交通 (指定港口)

4 Nights Singapore - Melaka/ Port Dickson - Phuket - Phuket - Singapore			
Day	Port	Arrive(Local)	Depart(Local)
Monday	Singapore	-	2359
Tuesday	Melaka / Port Dickson	0900	1800
Wednesday	Phuket (Deep Sea Port)	1500 (1400)	-
Thursday	Phuket (Deep Sea Port)	-	1200 (1100)
Friday	Singapore	1500	-

Last Boarding time 2230



Palace Villa
皇宫庭院别墅



Palace Penthouse
皇宫行政套房



Palace Suite
皇宫套房



Balcony
露台客房



Oceanview
海景客房



Interior
内侧客房

TERMS & CONDITIONS

1. Deposit 50% of cruise fee, full payment one month before departure. 100% Deposit for Peak Season.
2. Infants below 6 months at the time of sailing are not allowed to cruise;
A passenger under 18 years of age must be accompanied in the same cabin by a passenger 18 years or older.
3. Passage for a pregnant woman will only be permitted before her 24th week of pregnancy at the time of sailing.
4. Cruise Check in time will commence 4 hours before ship's departure; Gate closes one hour before departure.
5. Dream Cruises reserves the right to cancel and/ or substitute any information or any scheduled port of call/ itinerary/ price/ programmer at any time for any reason whatsoever without notice.