

04 SYDNEY EXPERIENCE

DAYS

AUSTRALIA | SEAT-IN-COACH TOUR



Sydney Opera House

FROM AUD **550** pp

VALIDITY 2019 – 2020
OCT – MAR

- Price Per Person in AUD
- Daily Departure
- Minimum 02 Adults
- Land Tour Package Only

PRICE INCLUSIONS

- ✓ Return airport – hotel shuttle transfer
- ✓ 3nights stay at your selected hotel with breakfast
- ✓ Sightseeing tours as per itinerary with English speaking commentary
- ✓ Australia goods and services tax

PRICE EXCLUSIONS

- ✗ Airfare & applicable airport taxes
- ✗ Personal Incidental Expenses
- ✗ Gratuities to driver & guide (AUD5 per person per day – pay direct)

REMARKS

- ❖ Tour prices quoted are subject to change
- ❖ Peak season surcharge may apply (To be advised upon booking)
- ❖ Subject to room availability
- ❖ No refund for un-utilized tour or services
- ❖ All payment in Ringgit Malaysia, subject to currency exchange rate
- ❖ Terms & Conditions Apply

VISA

Tourist visa is required.

TRAVEL INSURANCE

AIG Travel Insurance provider:
AIG Malaysia Insurance Berhad

Hotel	Adult			Child [2-11yrs]		Extension Night with B'fast Per Room Night		
	Twin Share	Triple Share	Single Room	Extra Bed	No Bed	Single/Twin	Triple	Child No Bed
3★-Travelodge	550	510	880	390	320	220	280	10
	Oct04-05'19; Feb28-Mar08'20 (min. 2 nights) – Surcharge AUD125 per room night Jan25-Feb03'20 – Surcharge AUD65 per room night							
4★-Vibe Hotel	580	550	930	410	330	350	310	20
	Oct04-05'19; Feb28-Mar08'20 (min. 2 nights) – Surcharge AUD125 per room night Jan25-Feb03'20 – Surcharge AUD60 per room night							
4★-Parkroyal Darling Harbour	800	720	1280	590	460	390	490	20
	Oct06-09'20 (min. 3nights) – Surcharge AUD200 per room night							
Block-Out Date: Dec30'19-Jan01'20								

DAY ITINERARY

- 01 SYDNEY - ARRIVAL**
Arrive Sydney airport, shuttle transfer to hotel.
- 02 COMPLIMENTARY- MORNING CITY TOUR WITH BONDI BEACH - GL/281 (Breakfast)**
(Operates Daily; Departs: 8.00am Returns: 11.45am)
Historic **Rocks** walking tour. Drive across **Sydney Opera House**, Sydney Town Hall, **Sydney Tower** and **Darling Harbour**. Visit **Mrs. Macquarie's Chair** with superb view of the harbor and famous **Bondi Beach**.
**Tour concludes at King Street Wharf.*
- 03 SYDNEY [Choose either ONE of below full day tour] (Breakfast)**
1. Blue Mountains & Wildlife Experience include cruise, operates daily (GL284)
 2. Port Stephens Dolphins Watcher, operates Mon, Wed, Sat (GL286)
- 04 SYDNEY - DEPARTURE (Breakfast)**
Depart Sydney, shuttle transfer to airport

TOUR DESCRIPTION (Subject to change)

TOUR ITINERARY

**MORNING SYDNEY CITY TOUR WITH BONDI BEACH (GL281)**

(Operates Daily; Departs: 8.00am Returns: 11.45am)

A brief **Walking tour of the Historic Rocks area**. Drive across **Sydney Opera House, Sydney Town Hall, Hyde Park, Parliament House, Royal Botanic Gardens, Sydney Tower** and **Darling Harbour**. Visit **Mrs. Macquarie's Chair** with superb view of the Harbor Bridge, **the Royal Australian Naval Base – Garden Island** and famous **Bondi Beach**.

**Tour concludes at King Street Wharf.*

**BLUE MOUNTAINS & WILDLIFE EXPERIENCE INCLUDE CRUISE (GL284)**

(Operates Daily; Departs: 8.00am Returns: 6.15pm)

Travel over the iconic Sydney Harbour Bridge. Enjoy 360 views of the **Jamison Valley**. Visit **Scenic World** where you will have the opportunity to enjoy the rides (own expense). Stop at **Echo Point** and see famous the **Three Sisters Rock**. Discover the shops in the quaint mountain village of Leura, free time to wander the streets. Enjoy an afternoon encounter at **Featherdale Wildlife Park**. Finish the day with a relaxing cruise down the **Parramatta River** and **Sydney Harbour**.

**Tour concludes at Darling Harbour or Circular Quay.*

**PORT STEPHEN DOLPHIN WATCHER (GL286)**

(Operates Mon, Wed, Sat ; Departs: 8.00am Returns: 6.45pm)

Visit **The Australian Reptile Park**. Then proceed a **Dophine Viewing Cruise**, search for the local pods of bottlenose dolphins. Enjoy spectacular scenery whilst cruising the waterways of Port Stephens. Hop on **4WD vehicle** and try the exhilarating experience of **sand-boarding** on Stockton Sand dunes.

HOTEL DESCRIPTION (for guideline only)

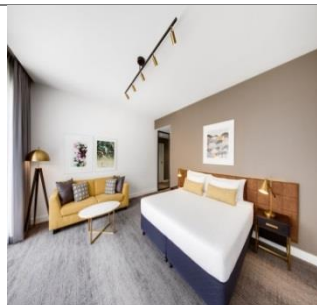
**TRAVELODGE HOTEL- 4★**

27-33 Wentworth Ave, Sydney NSW 2010, Australia

Tel: +61 2 8267 1700

https://www.travelodge.com.au/hotel/sydney/?utm_source=googleplaces&utm_medium=organic&utm_campaign=googleplaces

406 rooms - Located in Sydney CBD (Central Business District), just 5 minutes' walk from Museum Train Station. Darling Harbour is 2 km away and Chinatown is a 10-minute walk.

**VIBE HOTEL- 4★**

111 Goulburn St, Sydney NSW 2000, Australia

Tel: +61 2 8272 3300

https://vibehotels.com/hotel/sydney?utm_source=googleplaces&utm_medium=organic&utm_campaign=googleplaces

191 Rooms - Situated in the city's shopping and entertainment district. Hyde Park is just 3 minutes' walk. Darling Harbour and the iconic Sydney Opera House are each a 30-minute walk away.

**PARKROYAL DARLING HARBOUR - 4★**

150 Day St, Sydney NSW 2000, Australia

Tel: +61 2 9261 1188

https://www.panpacific.com/en/hotels-and-resorts/pr-darling-harbour-sydney.html?utm_source=google&utm_medium=business_listing

340 Rooms - Situated in Sydney CBD (Central Business District), 5 minutes' walk to Chinatown and Town Hall Station. Only 10 minutes by train from Sydney Opera House and The Rocks

TERMS & CONDITIONS

Passengers are deemed to have read, understood and accepted the following:-

Package Price

Quoted in Australian Dollar (AUD) and payment in Ringgit Malaysia (RM), subject to currency fluctuation. Validity of prices is seasonal and subject to change without prior notice. Child rates are applicable when child are occupying a room with at least two adult.

Deposit & Payment

A deposit of RM500 per person is required when booking is made. Receipt for deposit is valid for three (3) months from the date of issue. The deposit forms part of your final payment. Balance (final payment) must be made 15 days prior to departure. Failure to comply with this may result in an automatic cancellation of your reservations and forfeiture of your deposit.

Accommodation

Bedding varies from hotel to hotel, but the following usually applies:-

Single Occupancy: comprises 1 Queen/1 Twin Bed

Double Occupancy: comprises 1 Queen/King Bed

Twin Occupancy: comprises 2 Single Beds

Triple Occupancy: comprises 3 Single / 1 Double + Rollaway Bed

If a rollaway bed is required, an extra charge applies. Most hotels will not put more than one rollaway in a room. Baby cots can be requested in advance and if extra charge applies, passenger must pay directly to hotel.

Gratuities: AUD5 per person per day

Hotel Check-In/Out Times : Standard check-in time is after 1500hrs and check-out is before 1100hrs

Amendment Charges

An administrative fee of RM100 will be charged for each subsequent amendment made after the confirmation. Any other cost arising from the amendment will be borne by the passenger. No amendment can be made within 15 days prior to departure. A change on the entire booking is considered a cancellation and is subject to cancellation charges.

Cancellation Charges

You may cancel your booking at any time. Cancellation must be made in writing to avoid any misunderstanding. If your cancellation is received by the Company more than 30 days prior to your departure, an administration fee of RM100 per person will be levied. If your notice of cancellation is received fewer than 30 days prior to departure, the following cancellation charges will apply:

Cancellation Received Cancellation Fee

Between 29 to 16 days prior to departure: Forfeiture of the Deposit

Between 15 to 08 days prior to departure: 50% of tour price

Between 7 days to departure day (No-Show): 100% of tour price

Refund

No refund will be made for unused tickets or any other unutilized portion of the inclusions. Request for refund as a result of changes to the package must be made in writing and an administrative fee of RM100 per person applies in addition to the supplier's cancellation fee. Refunds are payable only through the original booking agent.

General Information

The company reserves the right to substitute or alter similarly-priced accommodation, services and itineraries when necessary and there shall be no refund in such situation.

Responsibility

The company acts only as an agent and does not manage, control or operate any suppliers of services. The Company assumes no liability for any loss, injury, damage, accident, delay or irregularity which may be caused by these events – Acts of God, natural disasters, civil & military disorders, industrial disputes and any cause beyond the reasonable control of any company or person engaged in carrying out the arrangements made.

Reservations

All reservations are subject to space availability and confirmation.

Customer's Responsibilities

- Travel Insurance – to cover medical expenses arising through illness or accident prior to or during the holiday, and loss of the holiday and loss of holiday monies, cancellation or curtailment of holiday for insurable reasons.
- Passport & Visas – to be in possession of a valid passport and whatever necessary immigration documentation may be required by the country(ies) for the duration of the holiday.

Visa Application

Tourist visa is required for Malaysian passport