

05 PERTH DISCOVERY

DAYS

AUSTRALIA | SEAT-IN-COACH TOUR



Pinnacles

FROM AUD **670** pp

VALIDITY 2019 – 2020
OCT – MAR

- Price Per Person in AUD
- Daily Departure
- Minimum 02 Adults
- Land Tour Package Only

PRICE INCLUSIONS

- ✓ Return airport – hotel shuttle transfer
- ✓ 4 nights stay at your selected hotel with breakfast
- ✓ Sightseeing Tour as per itinerary with English speaking commentary
- ✓ Australia goods and services tax

PRICE EXCLUSIONS

- ✗ Airfare & applicable airport taxes
- ✗ Personal Incidental Expenses
- ✗ Gratuities to driver & guide (AUD5 per person per day – pay direct)

REMARKS

- ❖ Tour prices quoted are subject to change
- ❖ Peak season surcharge may apply (To be advised upon booking)
- ❖ Subject to room availability
- ❖ No refund for un-utilized tour or services
- ❖ All payment in Ringgit Malaysia, subject to currency exchange rate
- ❖ Terms & Conditions Apply

VISA

Tourist visa is required.

TRAVEL INSURANCE

AIG Travel Insurance provider:
AIG Malaysia Insurance Berhad

Hotel (or Similar)	Adult			Child [2-11yrs]		Extension Night With Breakfast Per Room Night		
	Twin Share	Triple Share	Single Room	Extra Bed	No Bed	Single/Twin	Triple	Child No Bed
3★ - Quality Hotel Ambassador	670	660	890	400	290	150	180	10
Block-Out Dates: Oct01-12, 2019								
4★ - Travelodge	680	690	960	490	300	150	210	20
Block-Out Dates: Feb28 – Mar08, 2020								
4★ - Rendezvous Perth Central	730	720	1050	580	320	180	150	30
Block-Out Dates: Feb28 – Mar08, 2020								

DAY ITINERARY

- 01 PERTH – ARRIVAL**
Arrive Perth, seat-in-coach transfer to hotel. (No meet & greet service, shuttle transfer only available from 08.00am-07.00pm)
- 02 PERTH (Breakfast)**
Half Day Morning Perth And Fremantle City Explorer – PF
(Operates Daily; Departs: 8.00am Returns: 12.30pm)
A fantastic tour taking in Perth and Fremantle, the city and the alfresco lifestyle that Perth people enjoy. **Kings Park Botanical Gardens, Perth City, Cottesloe Beach and Fremantle.**
**Tour concludes at Fremantle or Barrack Street Jetty, no hotel drop-off.*
- 03-04 PERTH (Breakfast/ Lunch)**
[Choose either ONE of below Full Day Tour for Day 03 & Day 04]
1. Margaret River Region Tour – Operates Daily, except Dec25 (MR)
 2. Wave Rock, Wildflowers & Aboriginal Culture – Operates Tue, Wed, Fri & Sun (WR)
 3. Pinnacles Koalas and Sand Boarding 4WD Adventure With Fish & Chips Lunch – Operates Daily, except Dec25 (P3)
** Additional charge AUD28 per person to upgrade half lobster lunch*
 4. New Norcia Benedictine History, Swan Valley and Season Wildflowers incl Fish & Chips lunch – Operates Wed & Thu, except Dec25 (NN)
 5. Valley of the Giants Tree Top Walk – Operates Tue, except Dec25 (TT)
- 05 PERTH - DEPARTURE (Breakfast)**
Depart Perth, seat-in-coach transfer to airport. (Shuttle transfer only available from 08.00am-07.00pm)

TOUR DESCRIPTION (Subject to change)

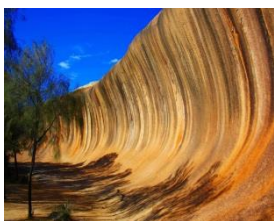
TOUR ITINERARY

**MARGARET RIVER REGION TOUR (MR)**

(Operates daily, except Dec25; Departs: 8.00am Returns: 09.30pm)

Stop at **Busselton Jetty** before heading to Margaret River. Lunch at one of Margaret River's oldest breweries for gourmet platter lunch of local produce with complimentary beer and cider tastings. Guided tour to visit **Mammoth Cave**. Continuing south, through the **Boranup Forest**. Visit **Cape Leeuwin Lighthouse**. Brief stop at Margaret River township.

**Winery may not open on select public holidays.*

**WAVE ROCK, WILDFLOWERS & ABORIGINAL CULTURE (WR)**

(Operates Tue, Wed, Fri & Sun, except Dec25; Departs: 8.00am Returns: 8.30pm)

Visit the **historic York**, the first township situated in the Avon Valley. Brief stop at **Dog Cemetery, Hippo's Yawn**. We then break for an Aussie country style lunch at the Wildflower Shop. After lunch proceed to the spectacular **Wave Rock** and the ancient **Gnamma Holes**. Whilst here visit either a **Wildlife Park**, view a unique **Antique Lace Collection** or visit **Toy Soldier Museum**. Visit the **Mulka's Cave**. **Wildflower viewing stops** are made en-route (seasonal).

**PINNACLES, KOALAS AND SAND BOARDING 4WD ADVENTURE WITH FISH & CHIPS LUNCH (P3)**

(Operates daily, except Dec25; Departs: 8.00am Returns: 7.30pm)

After stopping at **Caversham Wildlife Park** to view koalas and hand feed kangaroos, we travel to the lobster fishing town of Cervantes. Enjoy Fish & Chips lunch at Lobster Shack. Then onwards to **Pinnacles Desert** for an easy paced walk through the fascinating landscape. Afterwards enjoy a thrilling experience of **sand boarding** and **4-wheel driving** over the vast sand dunes of Lancelin.

**Half lobster lunch upgrade is available at AUD28 per person, must be advised upon booking.*

(Not suitable for pregnant women, people with back problem and infant.)

**NEW NORCIA BENEDICTINE HISTORY, SWAN VALLEY AND WILDFLOWER (NN)**

(Operates Wed & Thu, except Dec25; Departs: 8:00am Returns: 7:30pm)

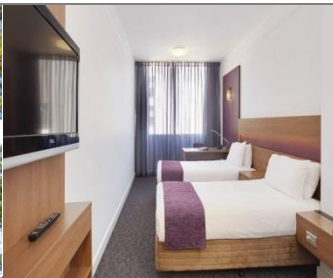
Visit New Norcia the famous **Benedictine Community** with a guided tour. Visit **Abbey Church**, produce shops. **Fish and Chips lunch** at New Norcia Hotel. Following lunch head off to the **Western Wildflower Farm** for a brief talk about how wildflowers are dried and exported. Continue on for an easy paced walk through the mystical Pinnacles Desert and see the Pinnacles from the look out over the park and if time permits make a visit to the Pinnacles Desert Discovery Centre. **Wildflower viewing stops** are made in season (seasonal).

**VALLEY OF THE GIANTS TREE TOP WALK (TT)**

(Operates Tue, except Dec25; Departs: 08.00am Returns: 10.30pm)

Travel through Western Australia's old growth forest to see the 51m tall **Diamond Tree** bush fire watch tower. After lunch, valley of the **Giants 'Tree Top Walk'**, a 600 metre long elevated walkway through the forest canopy reaching up to 40 metres above ground. Visit **Denmark** before returning to Perth. Stop en-route for dinner (own expense) at Kodja Place Visitor Centre.

HOTEL DESCRIPTION (for guideline only)

**QUALITY HOTEL AMBASSADOR PERTH- 3★**

196 Adelaide Terrace, Perth WA 6004, Australia

Tel: +61 8 9325 1455

<https://www.ambassadorhotel.com.au/>

170 rooms – Located 10 minutes' walk from both Victoria Square and St. Mary's Cathedral. Swan Bells Tower and the beautiful Swan River are each a 15-minute walk away.

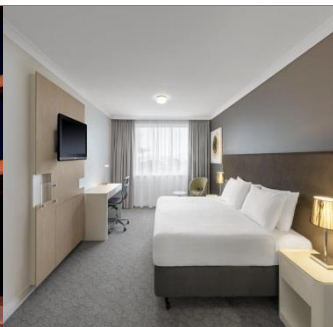
**TRAVELODGE HOTEL- 4★**

417 Hay St. Perth, Western Australia 6000.

Tel: +61 8 9238 1888

<https://www.travelodge.com.au/hotel/perth/>

126 Rooms - Located in the heart of Perth CBD (Central Business District) and within close walking distance to a range of shopping and Kings Park & Botanic Gardens.

**RENDEZVOUS PERTH CENTRAL- 4★**

24 Mount St, Perth WA 6000, Australia

Tel: +61 8 9481 0866

https://www.rendezvoushotels.com/hotel/perth-central?gclid=EAIaIQobChMIInsOd5b6f4QIVjBOPCh1AwqIEAAYAiAAEgLL1D_BwE&gclsrc=aw.ds

103 Rooms - Located in the heart of Perth CBD, 5-minute walk from Perth Convention and Exhibition Centre. Kings Park and the Botanic Gardens are 10 minutes' walk away.

TERMS & CONDITIONS

Passengers are deemed to have read, understood and accepted the following:-

Package Price

Quoted in Australian Dollar (AUD) and payment in Ringgit Malaysia (RM), subject to currency fluctuation. Validity of prices is seasonal and subject to change without prior notice. Child rates are applicable when child are occupying a room with at least two adult.

Deposit & Payment

A deposit of RM500 per person is required when booking is made. Receipt for deposit is valid for three (3) months from the date of issue. The deposit forms part of your final payment. Balance (final payment) must be made 15 days prior to departure. Failure to comply with this may result in an automatic cancellation of your reservations and forfeiture of your deposit.

Accommodation

Bedding varies from hotel to hotel, but the following usually applies:-

Single Occupancy: comprises 1 Queen/1 Twin Bed

Double Occupancy: comprises 1 Queen/King Bed

Twin Occupancy: comprises 2 Single Beds

Triple Occupancy: comprises 3 Single / 1 Double + Rollaway Bed

If a rollaway bed is required, an extra charge applies. Most hotels will not put more than one rollaway in a room. Baby cots can be requested in advance and if extra charge applies, passenger must pay directly to hotel.

Gratuities: AUD5 per person per day

Hotel Check-In/Out Times : Standard check-in time is after 1500hrs and check-out is before 1100hrs

Amendment Charges

An administrative fee of RM100 will be charged for each subsequent amendment made after the confirmation. Any other cost arising from the amendment will be borne by the passenger. No amendment can be made within 15 days prior to departure. A change on the entire booking is considered a cancellation and is subject to cancellation charges.

Cancellation Charges

You may cancel your booking at any time. Cancellation must be made in writing to avoid any misunderstanding. If your cancellation is received by the Company more than 30 days prior to your departure, an administration fee of RM100 per person will be levied. If your notice of cancellation is received fewer than 30 days prior to departure, the following cancellation charges will apply:

Cancellation Received Cancellation Fee

Between 29 to 16 days prior to departure: Forfeiture of the Deposit

Between 15 to 08 days prior to departure: 50% of tour price

Between 7 days to departure day (No-Show): 100% of tour price

Refund

No refund will be made for unused tickets or any other unutilized portion of the inclusions. Request for refund as a result of changes to the package must be made in writing and an administrative fee of RM100 per person applies in addition to the supplier's cancellation fee. Refunds are payable only through the original booking agent.

General Information

The company reserves the right to substitute or alter similarly-priced accommodation, services and itineraries when necessary and there shall be no refund in such situation.

Responsibility

The company acts only as an agent and does not manage, control or operate any suppliers of services. The Company assumes no liability for any loss, injury, damage, accident, delay or irregularity which may be caused by these events – Acts of God, natural disasters, civil & military disorders, industrial disputes and any cause beyond the reasonable control of any company or person engaged in carrying out the arrangements made.

Reservations

All reservations are subject to space availability and confirmation.

Customer's Responsibilities

- Travel Insurance – to cover medical expenses arising through illness or accident prior to or during the holiday, and loss of the holiday and loss of holiday monies, cancellation or curtailment of holiday for insurable reasons.
- Passport & Visas – to be in possession of a valid passport and whatever necessary immigration documentation may be required by the country(ies) for the duration of the holiday.

Visa Application

Tourist visa is required for Malaysian passport