

04 CAIRNS EXPERIENCE

DAYS

AUSTRALIA | SEAT-IN-COACH TOUR



Army Duck Rainforest Tour

FROM AUD **690** pp

VALIDITY 2019 – 2020
OCT – MAR

- Price Per Person in AUD
- Daily Departure
- Minimum 02 Adults
- Land Tour Package Only

PRICE INCLUSIONS

- ✓ Return airport – hotel shuttle transfer
- ✓ 3 nights stay at your selected hotel with breakfast
- ✓ Seat-In-Coach Tour as per itinerary with English speaking commentary
- ✓ Australia goods and services tax

PRICE EXCLUSIONS

- ✗ Airfare & applicable airport taxes
- ✗ Personal Incidental Expenses
- ✗ Gratuities to driver & guide (AUD5 per person per day – pay direct)

REMARKS

- ❖ Tour prices quoted are subject to change
- ❖ Peak season surcharge may apply (To be advised upon booking)
- ❖ Subject to room availability
- ❖ No refund for un-utilized tour or services
- ❖ All payment in Ringgit Malaysia, subject to currency exchange rate
- ❖ Terms & Conditions Apply

VISA

Tourist visa is required.

TRAVEL INSURANCE

AIG Travel Insurance provider:
AIG Malaysia Insurance Berhad

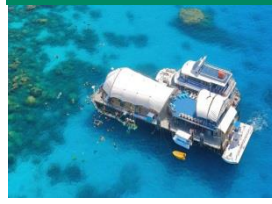
03Sep19/LC/13564-K/KKKP0421/0422

Hotel	Adult			Child [2-11yrs]		Extension Night with Breakfast Per Room Night		
	Twin Share	Triple Share	Single Room	Extra Bed	No Bed	Single/Twin	Triple	Child No Bed
4★ - Mantra Trilogy	690	860	960	570	290	170	270	NIL
Block-Out Dates: Oct01-07'19; Dec21'19-Jan04'20; Jan23-Feb02'20								
4★ - The Hotel Cairns	750	850	1070	450	290	200	260	20
Block-Out Dates: Jan23-Feb02'20								

DAY	ITINERARY	
01	CAIRNS - ARRIVAL Arrive Cairns airport, shuttle transfer to hotel. <i>*The transfer allows 01 luggage less than 30KG per person. Excess luggage more than 30KG, charge AUD20 per piece.</i>	
02	CAIRNS Great Barrier Reef Adventure from Reef Fleet Terminal Cairns (GA-1) (Operates Daily; Starts: 9.30am Returns: 5.30pm)	(Breakfast)
03	CAIRNS – [Choose either ONE of below tour] 1. Kuranda Rainforestation, no lunch – Operates daily, except Dec25 (R1B) 2. Cape Tribulation & Daintree Wilderness with lunch – Operates daily (TCT) <i>-Additional charge AUD85 per adult; AUD45 per child</i> 3. Kuranda Deluxe with Kuranda Scenic Railway – Operates daily. Except Dec25 (CKS) <i>-Additional charge AUD95 per adult; AUD50 per child</i> Block-out dates: Kuranda Scenic Rail : Oct17-18,31; Nov01,07-08; Dec09-10,25, 2019	(Breakfast)
04	CAIRNS - DEPARTURE Depart Cairns , shuttle transfer to airport <i>*The transfer allows 01 luggage less than 30KG per person. Excess luggage more than 30KG, charge AUD20 per piece.</i>	(Breakfast)

TOUR DESCRIPTION (Subject to change)

TOUR ITINERARY



GREAT BARRIER REEF ADVENTURE FROM REEF FLEET TERMINAL CAIRNS (GA-1)

(Operates Daily; Starts: 9.30am Returns: 5.30pm)
Includes: Morning & afternoon teas, 3 hours at Outer Barrier Reef platform, snorkeling equipment, use of lycra suit, hot & cold buffet lunch, eco reef talk, semi-submersible coral viewing, under water observatory.



KURANDA RAINFORESTATION NO LUNCH (R1B)

(Operates daily except Dec25; Departs: 7.45am Returns: 5.30pm ex.Cairns)
Includes: Kuranda Village, Army Duck Rainforest tour, Tropical Fruit Orchard, Pamagirri Aboriginal Experience, Koala & Wildlife Park and return hotel transfers.
Block-Out Dates
Kuranda Scenic Rail (Kuranda to Cairns): Oct17-18,31; Nov01,07-08; Dec09-10,2019



CAPE TRIBULATION & DAINTREE WILDERNESS WITH LUNCH (TCT)

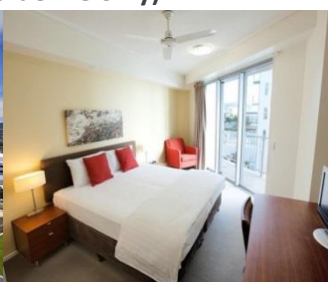
(Operates daily, except Dec25; Departs: 7.00am Returns: 7.30pm ex.Cairns)
Includes: Scenic Coastal Drive, Wildlife Habitat Port Douglas, morning tea, Daintree River Cable Ferry, Tropical lunch, guided Rainforest Walk, Cape Tribulation Beach, Alexandra Lookout, Daintree River Cruise and return hotel transfers.



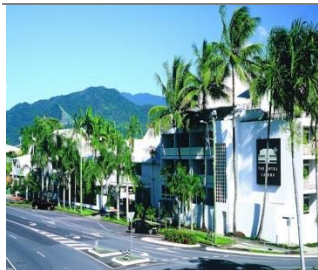
KURANDA DELUXE WITH SKYRAIL RAINFOREST CABLEWAY WITH LUNCH (CKS)

(Operates daily, except Dec25; Departs: 7.45am Returns: 5.30pm ex. Cairns)
Includes: Skyrail Rainforest Cableway, Kuranda Village, Army Duck Rainforest tour, Tropical Fruit Orchard, Pamagirri Aboriginal Experience, Koala & Wildlife Park, BBQ lunch and return hotel transfers.
Block-Out Dates
Kuranda Scenic Rail (Kuranda to Cairns): Oct17-18,31; Nov01,07-08; Dec09-10,2019

HOTEL DESCRIPTION (for guideline only)



MANTRA TRILOGY- 4★
101/105 Esplanade, Cairns City QLD 4870, Australia
Tel: +61 7 5665 4416
<https://www.mantra.com.au/queensland/tropical-north-qld/cairns/accommodation/resorts/mantra-trilogy/>
240 Rooms – Located on the Cairns Esplanade in the city centre. Reef Casino is a 10-minute walk.



THE HOTEL CAIRNS- 4★
Cnr Abbott And, Florence St, Cairns City QLD 4870, Australia
Tel: +61 7 4051 6188
<https://www.thehotelcairns.com/>
240 Rooms – Located positioned one block from the famous Cairns Esplanade in the central business district.

TERMS & CONDITIONS

Passengers are deemed to have read, understood and accepted the following:-

Package Price

Quoted in Australian Dollar (AUD) and payment in Ringgit Malaysia (RM), subject to currency fluctuation. Validity of prices is seasonal and subject to change without prior notice. Child rates are applicable when child are occupying a room with at least two adult.

Deposit & Payment

A deposit of RM500 per person is required when booking is made. Receipt for deposit is valid for three (3) months from the date of issue. The deposit forms part of your final payment. Balance (final payment) must be made 15 days prior to departure. Failure to comply with this may result in an automatic cancellation of your reservations and forfeiture of your deposit.

Accommodation

Bedding varies from hotel to hotel, but the following usually applies:-

Single Occupancy: comprises 1 Queen/1 Twin Bed

Double Occupancy: comprises 1 Queen/King Bed

Twin Occupancy: comprises 2 Single Beds

Triple Occupancy: comprises 3 Single / 1 Double + Rollaway Bed

If a rollaway bed is required, an extra charge applies. Most hotels will not put more than one rollaway in a room. Baby cots can be requested in advance and if extra charge applies, passenger must pay directly to hotel.

Gratuities: AUD5 per person per day

Hotel Check-In/Out Times : Standard check-in time is after 1500hrs and check-out is before 1100hrs

Amendment Charges

An administrative fee of RM100 will be charged for each subsequent amendment made after the confirmation. Any other cost arising from the amendment will be borne by the passenger. No amendment can be made within 15 days prior to departure. A change on the entire booking is considered a cancellation and is subject to cancellation charges.

Cancellation Charges

You may cancel your booking at any time. Cancellation must be made in writing to avoid any misunderstanding. If your cancellation is received by the Company more than 30 days prior to your departure, an administration fee of RM100 per person will be levied. If your notice of cancellation is received fewer than 30 days prior to departure, the following cancellation charges will apply:

Cancellation Received Cancellation Fee

Between 29 to 16 days prior to departure: Forfeiture of the Deposit

Between 15 to 08 days prior to departure: 50% of tour price

Between 7 days to departure day (No-Show): 100% of tour price

Refund

No refund will be made for unused tickets or any other unutilized portion of the inclusions. Request for refund as a result of changes to the package must be made in writing and an administrative fee of RM100 per person applies in addition to the supplier's cancellation fee. Refunds are payable only through the original booking agent.

General Information

The company reserves the right to substitute or alter similarly-priced accommodation, services and itineraries when necessary and there shall be no refund in such situation.

Responsibility

The company acts only as an agent and does not manage, control or operate any suppliers of services. The Company assumes no liability for any loss, injury, damage, accident, delay or irregularity which may be caused by these events – Acts of God, natural disasters, civil & military disorders, industrial disputes and any cause beyond the reasonable control of any company or person engaged in carrying out the arrangements made.

Reservations

All reservations are subject to space availability and confirmation.

Customer's Responsibilities

- Travel Insurance – to cover medical expenses arising through illness or accident prior to or during the holiday, and loss of the holiday and loss of holiday monies, cancellation or curtailment of holiday for insurable reasons.
- Passport & Visas – to be in possession of a valid passport and whatever necessary immigration documentation may be required by the country(ies) for the duration of the holiday.

Visa Application

Tourist visa is required for Malaysian passport