

05

DAYS

ADELAIDE DISCOVERY

AUSTRALIA | SEAT-IN-COACH TOUR



Kangaroo Island

FROM AUD **690** ppVALIDITY 2019 – 2020
OCT – MAR

- Price Per Person in AUD
- Daily Departure
- Minimum 02 Adults
- Land Tour Package Only

PRICE INCLUSIONS

- ✓ 4nights stay at your selected hotel with breakfast
- ✓ Sightseeing Tour as per itinerary with English speaking commentary
- ✓ Australia goods and services tax

PRICE EXCLUSIONS

- ✗ Airfare & applicable airport taxes
- ✗ Personal Incidental Expenses
- ✗ Gratuities to driver & guide (AUD5 per person per day – pay direct)

REMARKS

- ❖ Tour prices quoted are subject to change
- ❖ Peak season surcharge may apply (To be advised upon booking)
- ❖ Subject to room availability
- ❖ No refund for un-utilized tour or services
- ❖ All payment in Ringgit Malaysia, subject to currency exchange rate
- ❖ Terms & Conditions Apply

VISA

Tourist visa is required.

TRAVEL INSURANCE

 Travel Insurance provider:
AIG Malaysia Insurance Berhad

Hotel	Adult			Child [2-11yrs]		Extension Night with B'fast Per Room Night		
	Twin Share	Triple Share	Single Room	Extra Bed	No Bed	Single/Twin	Triple	Child No Bed
3★ - Ibis Styles Grosvenor	690	NIL	960	NIL	390	150	NIL	30
	Block-Out Dates: Nov29-Dec01'19, Dec31'19; Feb20-23'20; Mar06-08'20							
4★ - Mercure Grosvenor	750	720	1050	510	390	160	230	NIL
	Block-Out Dates: Nov29-Dec01'19, Dec31'19; Feb20-23'20; Mar06-08'20							
4★ - Grand Chancellor On Hindley	860	820	1300	610	470	220	290	30
	Jan12-26'19 – Surcharge AUD65 per room night Feb20-23'20 – Surcharge AUD125 per room night							

DAY ITINERARY

- 01 ADELAIDE - ARRIVAL**
Arrive Adelaide airport, own arrangement to hotel.
- 02 COMPLIMENTARY - HALF DAY MORNING ADELAIDE CITY TOUR - GL/581 (Breakfast)**
(Operates Daily; Departs: 9.15am Returns: 12.00pm)
Visit famous **Haigh's Chocolates** (not available Sunday & public holidays) and enjoy a complimentary tea or coffee and fine chocolates after a tour of the factory. Spectacular panoramic views over Adelaide from **Colonel Light's** lookout on Montefiore Hill. The beautiful Plane Tree Drive alongside the Botanic Gardens and the Adelaide Zoo.
**Tour concludes at the Adelaide Central Bus Station. No hotel drop-off.*
- 03 KANGOROO ISLAND TOUR WITH LUNCH – GL/586 (Breakfast/Lunch)**
(Operates daily ; Departs: 6.45am Returns: 10.30pm)
- 04 ADELAIDE [Choose either ONE of below full day tour] (Breakfast)**
1. Victor Harbor with McLaren Vale Tour- Operates Wed, Sat (GL/580)
 2. Grand Barossa Valley with Wineries and Hahndorf with lunch - Operates Daily (GL/580)
 3. Riverboats on the Murray River with lunch - Operates Mon, Fri (GL/583)
- 05 ADELAIDE – DEPARTURE (Breakfast)**
Depart Adelaide, own arrangement to airport.

TOUR DESCRIPTION (Subject to change)

TOUR ITINERARY

**VICTOR HARBOR WITH MCLAREN VALE TOUR (GL/580)**

(Operates Wed, Sat; Departs: 9.15am Returns: 5.15pm)

Picturesque coastal seaside towns including Port Elliot on stunning **Horseshoe Bay**. Take in the dramatic views from The Bluff. **McLaren Vale Wine** region with its vineyards, orchards and old stone wineries.

**GRAND BAROSSA VALLEY WITH HAHNDORF WITH LUNCH (GL/584)**

(Operates Daily; Departs: 9.15am Returns: 5.15pm)

Approach the **Barossa Valley** through the magnificent Seppeltsfield Estate. Wine tasting at Seppeltsfield and a guided tour at **Wolf Blass**. Enjoy an exclusive preview Penfolds tasting with lunch. Visit **Hahndorf**, Australia's oldest German settlement.

**RIVERBOATS ON THE MURRAY TOUR WITH LUNCH (GL/583)**

(Operates Mon, Fri ; Departs: 9.15am Returns: 5.15pm)

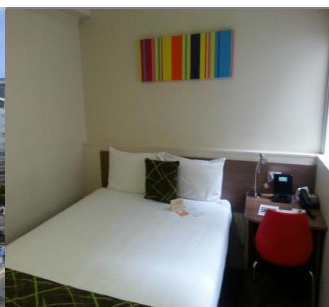
Cruise the Murray River on either the Proud Mary Riverboat or the Captain Proud Paddle Wheeler. Enjoy coffee or tea on boarding the boat with lunch following. Visit a scenic lookout with stunning overview of Mannum. Return Adelaide via Melba's chocolate Factory at Woodside.

**KANGAROO ISLAND TOUR WITH LUNCH (GL586)**

(Operates daily ; Departs: 6.45am Returns: 10.30pm)

Cruise across Backstairs Passage to Penneshaw on **Kangaroo Island**. Walk amongst wild Seals as they laze on the beach and surf. Lookout for Koalas and Echidnas in their natural habitat. Two course lunch at Vivonne Bay Bistro.

HOTEL DESCRIPTION (for guideline only)

**IBIS STYLES GROSVENOR- 3★**

125 North Terrace, Adelaide SA 5000, Australia

Tel: +61 8 8407 8888

<https://www.accorhotels.com/gb/hotel-9789-ibis-styles-adelaide-grosvenor/index.shtml>

64 rooms - Located 10 minutes' walk from the city centre and 10 minutes' drive and Adelaide Airport is 15 minutes' drive away. Adelaide Oval is 10 minutes' walk away.

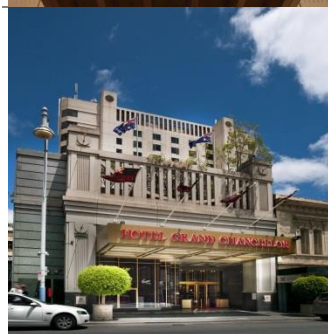
**MERCURE GROSVENOR- 3★**

125 North Terrace, Adelaide SA 5000, Australia

Tel: +61 8 8407 8888

<https://www.accorhotels.com/gb/hotel-5620-mercure-grosvenor-hotel-adelaide/index.shtml>

181 Rooms – Located just 10 minutes' walk from both Adelaide's city centre and Adelaide Oval. It is just 2 minutes' walk from Adelaide Casino. Adelaide Zoo is 20 minutes' walk away.

**GRAND CHANCELLOR ON HINDLEY- 4★**

65 Hindley St, Adelaide SA 5000, Australia

Tel: +61 8 8231 5552

<https://www.grandchancellorhotels.com/hotel-grand-chancellor-adelaide>

208 Rooms – Located in the heart of **Adelaide city** centre. Just a 3-minute walk from Rundle Mall and Adelaide Convention Centre.

TERMS & CONDITIONS

Passengers are deemed to have read, understood and accepted the following:-

Package Price

Quoted in Australian Dollar (AUD) and payment in Ringgit Malaysia (RM), subject to currency fluctuation. Validity of prices is seasonal and subject to change without prior notice. Child rates are applicable when child are occupying a room with at least two adult.

Deposit & Payment

A deposit of RM500 per person is required when booking is made. Receipt for deposit is valid for three (3) months from the date of issue. The deposit forms part of your final payment. Balance (final payment) must be made 15 days prior to departure. Failure to comply with this may result in an automatic cancellation of your reservations and forfeiture of your deposit.

Accommodation

Bedding varies from hotel to hotel, but the following usually applies:-

Single Occupancy: comprises 1 Queen/1 Twin Bed

Double Occupancy: comprises 1 Queen/King Bed

Twin Occupancy: comprises 2 Single Beds

Triple Occupancy: comprises 3 Single / 1 Double + Rollaway Bed

If a rollaway bed is required, an extra charge applies. Most hotels will not put more than one rollaway in a room. Baby cots can be requested in advance and if extra charge applies, passenger must pay directly to hotel.

Gratuities: AUD5 per person per day

Hotel Check-In/Out Times : Standard check-in time is after 1500hrs and check-out is before 1100hrs

Amendment Charges

An administrative fee of RM100 will be charged for each subsequent amendment made after the confirmation. Any other cost arising from the amendment will be borne by the passenger. No amendment can be made within 15 days prior to departure. A change on the entire booking is considered a cancellation and is subject to cancellation charges.

Cancellation Charges

You may cancel your booking at any time. Cancellation must be made in writing to avoid any misunderstanding. If your cancellation is received by the Company more than 30 days prior to your departure, an administration fee of RM100 per person will be levied. If your notice of cancellation is received fewer than 30 days prior to departure, the following cancellation charges will apply:

Cancellation Received Cancellation Fee

Between 29 to 16 days prior to departure: Forfeiture of the Deposit

Between 15 to 08 days prior to departure: 50% of tour price

Between 7 days to departure day (No-Show): 100% of tour price

Refund

No refund will be made for unused tickets or any other unutilized portion of the inclusions. Request for refund as a result of changes to the package must be made in writing and an administrative fee of RM100 per person applies in addition to the supplier's cancellation fee. Refunds are payable only through the original booking agent.

General Information

The company reserves the right to substitute or alter similarly-priced accommodation, services and itineraries when necessary and there shall be no refund in such situation.

Responsibility

The company acts only as an agent and does not manage, control or operate any suppliers of services. The Company assumes no liability for any loss, injury, damage, accident, delay or irregularity which may be caused by these events – Acts of God, natural disasters, civil & military disorders, industrial disputes and any cause beyond the reasonable control of any company or person engaged in carrying out the arrangements made.

Reservations

All reservations are subject to space availability and confirmation.

Customer's Responsibilities

- Travel Insurance – to cover medical expenses arising through illness or accident prior to or during the holiday, and loss of the holiday and loss of holiday monies, cancellation or curtailment of holiday for insurable reasons.
- Passport & Visas – to be in possession of a valid passport and whatever necessary immigration documentation may be required by the country(ies) for the duration of the holiday.

Visa Application

Tourist visa is required for Malaysian passport