

08

HORIZON

GREECE | SEAT-IN-COACH TOUR

Athens – Delphi – Kalambaka – Santorini – Athens

DAYS



Delphi

FROM EUR **820** ppVALIDITY **2019**
Apr – Oct

- Price quoted in EUR
- Daily Departure
- Minimum 02 Adults
- Land Tour Package Only

PRICE INCLUSIONS

- ✓ All transfers as mentioned in the itinerary
- ✓ 7 nights hotel with daily breakfast
- ✓ Hotel Taxes
- ✓ Ferry tickets Piraeus – Santorini -Piraeus (Economy Class, free seating)
- ✓ Sightseeing tour as per itinerary with English Speaking local guide

PRICE EXCLUSIONS

- ✗ Airfare & applicable airport taxes
- ✗ Personal Incidental Expenses
- ✗ Greece Stayover Tax (3★ hotels): EUR1.5 per room night – pay direct to hotel
- ✗ Gratuities to driver & guide: Suggest EUR5 per person per day – pay direct

REMARKS

- ❖ Tour prices and itinerary quoted are subject to change
- ❖ Peak season surcharge may apply (To be advised upon booking)
- ❖ Subject to room availability
- ❖ Payment in Ringgit Malaysia (RM), subject to currency exchange fluctuation
- ❖ No refund for un-utilized tours
- ❖ Terms & Conditions Apply

VISA

Tourist visa is not required for Malaysia passport holder for stay up to 90days.

TRAVEL INSURANCE



Travel Insurance provider:
AIG Malaysia Insurance Berhad

Apr05'19/LC/13564-K/KKKKPO421/0422

SEASON	ADULT		
	TWIN SHARE	TRIPLE SHARE	SINGLE ROOM
Apr / Oct1-25	820	680	1150
May	830	700	1160
Jun / Sep	850	720	1170
Jul – Aug	860	750	1190

Block-Out Dates: Apr27-28 & Apr30 - May01, 2019

Hotel Used (or similar class)

Hotel Cat.	Athens (4N)	Kalambaka (1N)	Santorini (2N)
3★	Best Western Museum	Orfeas	Sunrise / Nikolas

DAY	ITINERARY
01	ATHENS – ARRIVAL Upon arrival in Athens, meet and transfer to hotel. Rest of the day at leisure.
02	ATHENS (Breakfast) Guided Athens sightseeing tour. Pass by Panathenaic Stadium , the Temple of Olympian Zeus , Hadrian's Arch , the Parliament and the Memorial of the Unknown Soldier , the Academy , the University , the National Library , the Parthenon , Erectheion and the Temple of Athena Nike . Continue to visit Acropolis and Acropolis Museum .
03	ATHENS - DEPHI – KALAMBAKA (Breakfast/Dinner) Morning, pick-up and proceed a Delphi tour . Visit the archaeological site of Delphi. Continue journey to Kalambaka .
04	KALAMBAKA – METEORA – ATHENS (Breakfast) Visit the Meteora , the UNESCO World Heritage Site. Religious treasures are built on huge rocks with a magnificent view. On the way back to Athens. Stop in the coastal town of Thermopylae. Arrive in Athens in the early evening.
05	ATHENS – SANTORINI (Breakfast) Morning transfer to Piraeus Port and depart to Santorini . Arrive and transfer to hotel. Free day in Santorini.
06	SANTORINI (Breakfast) Day at leisure to enjoy the unique views, the black sandy beaches as well as the beautiful sunset.
07	SANTORINI – ATHENS (Breakfast) Transfer to the port to embark the ferry to Pireus port . Arrival and transfer to hotel.
08	ATHENS Depart Athens and transfer to Airport.

Hotel Description (guideline only)

ATHENS

**BEST WESTERN MUSEUM – 3***

16, Bouboulinas Street - Near National Archaeological Museum

Tel: +30210 3805611

<https://www.museum-hotel.gr/>

93 rooms - Located 45-minute drive from Eleftherios Venizelos International Airport. Omonia Metro Station is 600 m away.

**TITANIA HOTEL – 4***

52, Panepistimiou Street - Near Omonia Square

Tel: +30 21 0332 6000

<http://www.titania.gr/>

396 rooms – Located in the historic and commercial centre of Athens. The Acropolis, the University and the Academy of Athens, the National library, and the Greek Parliament are within easy walking distance of the front door.

KALAMBAKA

**ORFEAS – 3***

58 Pindoy Street Kalambaka, Kalampaka 422 00, Greece

Tel: +30 2432 077444

<http://www.hotel-orfeas.gr/>

110 rooms - Located amidst a garden in Kalampaka. A bus stop is 50 m away, while Kalampaka Centre lies within 500 m. Meteora Monasteries are at a distance of 3 km.

**GRAND METEORA – 4***

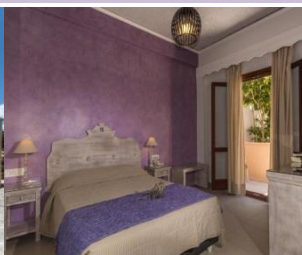
Kastraki Kalmpaka, Kastraki 422 00, Greece

Tel: +30 2432 077707

<http://www.grandmeteora.gr/>

111 rooms - Located in Laspes Kastrakiou. 500 m from Grand Meteora Hotel. Kalabaka Town is 2 km away, while the Meteora Monasteries are at a distance of 1 km.

SANTORINI

**SUNRISE – 2★**

Thera 847 00, Greece

Tel: +30 2286 024555

<http://www.hotelsunrise-santorini.com/>

24 rooms - Located just a short walk from the bus terminal and 5 km from both Santorini Airport and the closest black sand beach.

**NIKOLAS – 2★**

Unnamed Road, Karterados 847 00, Greece

Tel: +30 2286 023912

<https://www.nissosthira.gr/>

42 rooms - Located ikolas Hotel is peacefully located in Karterados, 15 minutes' walking from Santorini's capital Fira. Santorini Airport is less than 5 km away.

TERMS & CONDITIONS

Passengers are deemed to have read, understood and accepted the following:-

Package Price

Quoted in Euro Dollar (EUR) and payment in Ringgit Malaysia (RM), subject to currency fluctuation. Validity of prices is seasonal and subject to change without prior notice. Child rates are applicable when child are occupying a room with at least two adult.

Deposit & Payment

A deposit of RM500 per person is required when booking is made. Receipt for deposit is valid for three (3) months from the date of issue. The deposit forms part of your final payment. Balance (final payment) must be made 45 days prior to departure. Failure to comply with this may result in an automatic cancellation of your reservations and forfeiture of your deposit.

Accommodation

Bedding varies from hotel to hotel, but the following usually applies:-

Single Occupancy: comprises 1 King bed Double Occupancy: comprises 1 Queen/King Bed

Twin Occupancy: comprises 2 Double Beds Triple and Quad Occupancy: comprises 2 Double Beds

If a rollaway bed is required, an extra charge applies. Most hotels will not put more than one rollaway in a room. Baby cots can be requested in advance and if extra charge applies, passenger must pay directly to hotel.

Gratuities

Guideline: EUR5 per person per day for driver and guide.

Hotel Check-In/Out Times

Standard check-in time is after 1500hrs and check-out is before 1100hrs

Amendment Charges

An administrative fee of RM100 will be charged for each subsequent amendment made after the confirmation. Any other cost arising from the amendment will be borne by the passenger. No amendment can be made within 15 days prior to departure. A change on the entire booking is considered a cancellation and is subject to cancellation charges.

Cancellation Charges

You may cancel your booking at any time. Cancellation must be made in writing to avoid any misunderstanding. If your cancellation is received by the Company more than 30 days prior to your departure, an administration fee of RM100 per person will be levied. If your notice of cancellation is received fewer than 30 days prior to departure, the following cancellation charges will apply:

Cancellation Received Cancellation Fee

More than 45days prior to departure : Deposit Forfeited

Between 44 to 30 days prior to departure: 10% of tour price

Between 29 to 01 day prior to departure: 50% of tour price

Arrival day or on tour or no-show : 100% of tour price

Refund

No refund will be made for unused tickets or any other unutilized portion of the inclusions. Request for refund as a result of changes to the package must be made in writing and an administrative fee of RM100 per person applies in addition to the supplier's cancellation fee. Refunds are payable only through the original booking agent.

General Information

The company reserves the right to substitute or alter similarly-priced accommodation, services and itineraries when necessary and there shall be no refund in such situation.

Responsibility

The company acts only as an agent and does not manage, control or operate any suppliers of services. The Company assumes no liability for any loss, injury, damage, accident, delay or irregularity which may be caused by these events – Acts of God, natural disasters, civil & military disorders, industrial disputes and any cause beyond the reasonable control of any company or person engaged in carrying out the arrangements made.

Reservations

All reservations are subject to space availability and confirmation.

Customer's Responsibilities

- Travel Insurance – to cover medical expenses arising through illness or accident prior to or during the holiday, and loss of the holiday and loss of holiday monies, cancellation or curtailment of holiday for insurable reasons.
- Passport & Visas – to be in possession of a valid passport and whatever necessary immigration documentation may be required by the country(ies) for the duration of the holiday.

Visa

Tourist visa is not required for Malaysian passport holder for a stay of 90 days.