

# 5D4N SIEM REAP / PHNOM PENH



Russian Market – Phnom Penh

## CAMBODIA

FROM RM **1970** pp

**VALIDITY** 2018 – 2019  
OCT – MAR

### PRIVATE TOUR

- Price Per Person in RM
- Daily Departure
- Minimum 02 Adults
- Land Tour Package Only

### PRICE INCLUSIONS

- ✓ Return private transfer airport- hotel
- ✓ 4 nights stay at your selected hotel with daily breakfast
- ✓ 01 way public bus transfer Siem Reap – Phnom Penh
- ✓ Meals as per itinerary (lunch & dinner at local restaurant)
- ✓ Sightseeing tour + entrance fees with English speaking local guide
- ✓ Drinking water during the tours

### PRICE EXCLUSIONS

- ✗ Airfare & applicable airport taxes
- ✗ Personal Incidental Expenses
- ✗ Gratuities to guide & driver – Compulsory USD5 per person per day (pay direct)

### REMARKS

- ❖ Tour prices and itinerary quoted are subject to change
- ❖ Peak season surcharge may apply (To be advised upon booking)
- ❖ Subject to room availability
- ❖ Maximum room capacity: 3 Adults or 2 adults + 1 child
- ❖ No refund for un-utilized tours & services
- ❖ Terms & Conditions Apply

### VISA

Tourist visa not required for Malaysia passport holder for a stay up to 30 days

### TRAVEL INSURANCE

**AIG** Travel Insurance provider:  
**AIG Malaysia Insurance Berhad**  
09OCT'18/LC/13564-K/KKKP0421/0422

HOTEL CATEGORY (or similar)	ADULT			CHILD (2-11yrs)	
	Twin Share	Triple Share	Single Room	Extra Bed	No Bed
3★PNH: Mito Hotel 4★REP: Silk D'Angkor Boutique	1970	1830	2370	1970	1480
4★PNH: Lux Riverside Hotel 4★REP: Spring Palace Boutique	2060	1920	2560	2060	1550
4★PNH: Frangipani Royal Palace 4★REP: Memoire D'Angkor	2350	2200	3110	2350	1750

Hotel	Peak Season Surcharge		Compulsory Dinner (Per Person)	
	Dates	Per Room Night	Christmas Eve (24Dec'18)	New Year Eve (31Dec'18)
			Pax	Pax
Silk D'Angkor	Dec20'18-Jan05'19; Feb01-15'19	50	NA	NA
Spring Palace Boutique	Dec20'18-Jan10'19; Feb04-10'19	50	225	225
Memoire D'Angkor	Dec22'18-Jan03'19; Feb02-08'19	50	325	325

DAY	ITINERARY
01	<b>SIEM REAP – ARRIVAL</b> (Lunch/Dinner) Arrive Siem Reap, pick-up and transfer to visit <b>Angkor Silk Farm, Tonle Sap Lake</b> . Dinner with <b>Khmer Traditional Dance Show</b> .
02	<b>SIEM REAP</b> (Breakfast/Lunch/Dinner) Full day tour to <b>Angkor Thom area, Ta-Prom Temple, Angkor Wat and Bakheng Hill</b> to view the sunset (subject to weather condition).
03	<b>SIEM REAP – PHNOM PENH by Public Bus</b> (Breakfast/Lunch/Dinner) Breakfast at the hotel, transfer to Phnom Penh by <b>public coach</b> (Approximately 6 hours), up on arrival pick up and transfer to have your lunch before check in your hotel. In afternoon, visit Royal Palace, Silver Pagoda, Wat Phnom, <b>Independent Monument, Sisowath Quay and Naga World Casino</b> .
04	<b>PHNOM PENH</b> (Breakfast/Lunch/Dinner) Visit <b>Tuol Sleng Museum, the Killing Fields of Choeng EK</b> . After lunch, continue shopping at <b>Russian Market</b> (Psah Tuol Thom Pong).
05	<b>PHNOM PENH – DEPARTURE</b> (Breakfast) Depart Phnom Penh, private transfer to airport for departure.

## TOUR DESCRIPTION (Subject to change)

DAY	ITINERARY	
01	<b>SIEM REAP – ARRIVAL</b> Arrive Siem Reap, visit <b>Angkor Silk Farm</b> and <b>floating village of Chong Khneas</b> . Take a traditional wooden boat to <b>Tonle Sap Lake</b> , the “Great Lake” of Cambodia, one of the largest lake in Asia. Then proceed to visit “ <b>Les Artisans D’Angkor – Chantiers Ecoles</b> ” of Siem Reap renowned woodworking, stone carving and polychrome workshops and local market. Dinner with <b>Khmer Tranditional Dance Show</b> .	<b>Lunch/Dinner</b>
02	<b>SIEM REAP</b> Morning visit <b>Angkor Thom</b> – the great city of the ancient Khmer temple (the <b>South Gate of Angkor Thom, Bayon, Elephants Terrace &amp; Leper King Terrace, Royal Palace</b> and <b>Ta Prohm</b> ). Afternoon visit <b>Angkor Wat</b> – one of the wonder of the world built in between 09 <sup>th</sup> - 13 <sup>th</sup> century and <b>Bakheng Hill</b> to view beautiful sunset (subject to weather condition).	<b>Breakfast/Lunch/Dinner</b>
03	<b>SIEM REAP – PHNOM PENH by Public Bus</b> Breakfast at the hotel, transfer to Phnom Penh by <b>public coach</b> (Approximately 6 hours), up on arrival pick up and transfer to have your lunch before check in your hotel. Visit the <b>National Museum</b> , also called Musee des Beaux-Arts, the <b>Royal Palace</b> , built by King Norodom in 1866 on the site of the old town, and the <b>Silver Pagoda</b> , the <b>Wat Phnom Temple</b> , the <b>Independent Monument</b> , the <b>Sisowath Quay</b> and the <b>Naga World Casino</b> .	<b>Breakfast/Lunch/Dinner</b>
04	<b>PHNOM PENH</b> Visit the Notorious <b>Tuol Sleng Museum</b> , the <b>Killing Fields of Choeng EK</b> just outside Phnom Penh about a 20-40 minute was an orchard and a Chinese cemetery prior to 1975. During the Khmer Rouge regime it became one of the killing fields. After lunch continue to the <b>Russian Market</b> (Psah Tuol Thom Pong), a lively outdoor market where you will find antiquities, silver and gold jewelry, gems, silk, kramas, stone and wood carvings, as well as T-Shirts.	<b>Breakfast/Lunch/Dinner</b>
05	<b>PHNOM PENH – DEPARTURE</b> Depart Phnom Penh, private transfer to airport for departure.	<b>Breakfast</b>

# 5D4N SIEM REAP / PHNOM PENH

## HOTEL DESCRIPTION (for guideline only)

### SIEM REAP



#### **SILK D'ANGKOR BOUTIQUE – 4★**

Charles De Gaulle, Krong Siem Reap 17252, Cambodia

Tel: +855 63 963 866

<https://silkdangkor.com/home/>

49 rooms. Located on the **main road** leading up to the world-renowned **Angkor Wat** 5 km away. Its 1.6 km from **Pub Street**. Siem Reap - Angkor International Airport is 7 km away



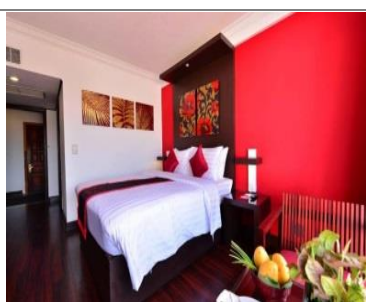
#### **SPRING PALACE BOUTIQUE HOTEL – 4★**

Siem Reap, Thmor Meas Rd, Krong Siem Reap 17254, Cambodia

Tel: +855 63 966 499

<http://springpalace.asia/>

43 rooms. Pub Street is 1.4 km from Spring Palace Boutique Hotel, while Angkor Wat is 8 km away. The nearest airport is Siem Reap - Angkor International Airport, 9 km away.



#### **MEMOIRE D'ANGKOR HOTEL – 4★**

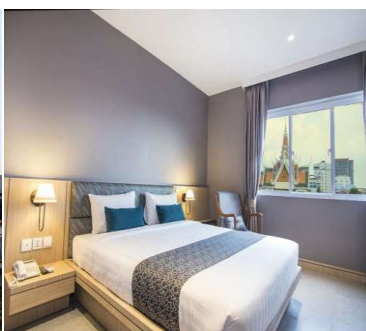
54 Sivatha Rd, Krong Siem Reap, Cambodia

Tel: +855 63 766 999

<https://www.memoiredangkor.com/>

48 rooms. Located 10-minute walk from the famous Phsar Chas (Old Market) and the lively **Pub Street**. It is a 15-minute drive from the World Heritage Site of **Angkor Wat** Temple. Siem Reap International Airport is 7 km away.

### PHNOM PENH



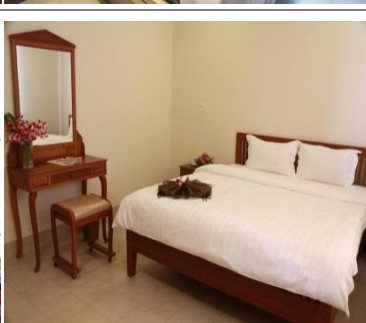
#### **MITO HOTEL – 3★**

No. 11 St.174 Oknha Ket Rd (Corner of Monivong Blvd)\_Sangkat Boeung Rang, Khan Daun Penh\_Phnom Penh 12000, Cambodia

Tel: +855 23 213 999

<http://www.mitohotel.com/>

80 rooms. Located Mito Hotel is located in central Phnom Penh, a 10-minute walk to the Royal Palace and Wat Phnom Tonle Sap River. Mito Hotel is a 15-minutes drive from Phnom Penh International Airport.



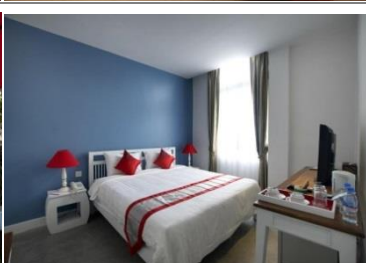
#### **LUX RIVERSIDE HOTEL - 4★**

Oknha In, Phnom Penh, Cambodia

Tel: +855 23 722 828

<http://www.luxriversidehotels.com/>

102 rooms. It is 500 m to Wat Ounaloum and steps away from Riverfront Park. The Royal Palace, Central Market, Chaktomouk Conference Hall 2 and Wat Phnom are all within 1 km away. The nearest airport, Phnom Penh International Airport is 9.9 km away



#### **FRANGIPANI ROYAL PALACE - 4★**

#27, Street 178, Sangkat Cheychumneas, Khan Daun Penh, Daun Penh, Phnom Penh, Cambodia

Tel: +855 23 223 320/+855 16 581 045/+855 23 223 340

<http://www.frangipanipalacehotel.com/>

Just a 2-minute walk away from the Royal Palace, Frangipani Royal Palace Hotel is located in the lively River Front area.

## TERMS & CONDITIONS

Passengers are deemed to have read, understood and accepted the following:-

### Package Price

Quoted and payment in Ringgit Malaysia (RM). Validity of prices is seasonal and subject to change without prior notice. Child rates are applicable when child are occupying a room with at least two adult.

### Deposit & Payment

A deposit of RM 200 per person is required when booking is made (subject to change based on travel dates). Receipt for deposit is valid for three (3) months from the date of issued. The deposit forms part of your final payment. Balance (final payment) must be made 30 days prior to departure (subject to confirmation of tour package). Failure to comply with this may result in an automatic cancellation of your reservations and forfeiture of your deposit.

### Accommodation

Bedding various from hotel to hotel, but the following usually apply:-

Single – consist 1 Queen Bed

Double – consist 1 Queen/King Bed

Twin – consist 2 Single Beds

Triple – consist 1 Double Bed & 1 rollaway bed / 3 Single beds

If a rollaway bed is required, extra charge applies. Most hotels will not put more than one rollaway in a room. Baby cots can be requested in advance and if extra charge applies, passenger must pay directly to hotel.

### Hotel Check In/Out Times

Standard check in time is after 1500hrs and check out is before 1100hrs.

### Amendment Charges

An administrative fee of RM100 will be charged for each subsequent amendment made after the confirmation. Any other cost arising from the amendment will be borne by the passenger. No amendment can be made within 30 days prior to departure. A change on the entire booking is considered as a cancellation and is subject to cancellation charges.

### Cancellation Charges

You may cancel your booking at any time. Cancellation must be made in writing to avoid any misunderstanding. If your cancellation is received by the Company more than 30 days prior to your departure, an administration fee of 15% of tour price per person will be levied. If your notice of cancellation is received less than 30 days prior to departure, the following cancellation charges will apply.

### Cancellation Received Cancellation Fee

Between 29 to 16 days prior to departure: 25% of tour price

Between 15 to 08 days prior to departure: 50% of tour price

Between 7 to departure day (No-Show): 100% of tour price

### Refund

No refund will be made for unused tickets or any other unutilized portion of the inclusions. Request for refund as a result of changes to the package must make in writing and an administrative fee of RM100 per person applies in addition to the supplier's cancellation fee. Refunds are payable only through the original booking agent.

### General Information

The company reserves the right to substitute or alter similarly priced accommodation, services and itineraries when necessary and there shall be no refund in such situation.

### Responsibility

The company acts only as an agent and does not manage or control or operate any suppliers of services. The Company assumes no liability for any loss, injury, damage, accident, delay or irregularity which may cause by these events - Acts of God, natural disasters, civil & military disorders, industrial disputes and any cause beyond the reasonable control of any company or person engaged in carrying out the arrangements made.

### Reservations

All reservations are subject to space availability and confirmation.

### Customer's Responsibilities

- Travel Insurance - a coverage to cover medical expenses arising through illness or accident prior to or during the holiday and loss of the holiday and loss of holiday monies cancellation or curtailment of holiday for insurable reasons.
- Passport & Visas - to be in possession of a valid passport and whatever necessary immigration documentation may be required by the country (ies) for the duration of the holiday. Passport must have minimum validity of at least six [6] months from the date of your return to Malaysia.

### Visa

Tourist visa is not required for Malaysian passport for a stay up to 30days.