

# 5D4N SEOUL DISCOVERY

## SOUTH KOREA

FROM RM **2570** pp

**VALIDITY** 2018 – 2019  
JUL – MAR

### PRIVATE TOUR

- Price Per Person in RM
- Daily Departure
- **Minimum 04 Adults**
- Land Tour Package Only

### PRICE INCLUSIONS

- ✓ Return transfer airport – hotel – airport
- ✓ 04Nights accommodation with daily breakfast
- ✓ Lunch at local restaurant
- ✓ Sightseeing as per itinerary with local English speaking driver guide

### PRICE EXCLUSIONS

- ✗ Airfare & applicable airport taxes
- ✗ Personal Incidental Expenses
- ✗ Gratuities to guide & driver : US\$5 per person per day – pay direct

### REMARKS

- ❖ Tour prices and itinerary quoted are subject to change
- ❖ Peak season surcharge may apply (To be advised upon booking)
- ❖ Subject to room availability
- ❖ No refund for un-utilized tours or services
- ❖ Terms & Conditions Apply

### VISA

Tourist visa is not required for Malaysian passport holder for a stay up to 90days

### TRAVEL INSURANCE

**AIG** Travel Insurance provider:  
AIG Malaysia Insurance Berhad

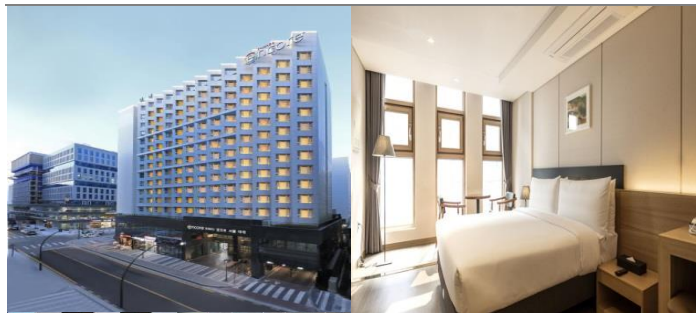
Hotel (or similar class)	Adult (Minimum 4 adults)		Child [2-11yrs]		Extension Night with Breakfast Per Room Night	
	Twin /Triple Share	Single Room	Extra Bed	No Bed	Single/ Twin	Triple
3★ - Lucebridge/ Coop City	2570	3200	2310	1930	350	420
4★ - Lotte City Guro	2860	3850	2580	2150	490	660

**Block-out dates: Sep21-26; Oct01-10; Dec20-31,2018; Jan01-05, Feb02-10,2019**

### DAY ITINERARY

- 01 SEOUL - ARRIVAL**  
Arrive at Seoul, transfer to hotel for check-in.
- 02 SEOUL** (Breakfast/Lunch)  
Depart to **Petite France**, the shooting place for drama 'My Love From The Star'. Visit **Nami Island** with boat trip, a beautiful half-moon shape island where famous drama 'Winter Sonata' was filmed here. Continue visit **Chuncheon Myeongdong Street** and **Seoul 7017 Sky Garden**, it's an elevated, linear park in Seoul, built atop a former highway overpass.
- 03 SEOUL** (Breakfast/Lunch)  
Visit **Demilitarized Zone, Dora Observatory** – The 3<sup>rd</sup> Tunnel. It situated on top of Dorasan (Mount Dora), the observatory looks across the Demilitarized Zone. Continue to visit **Seaweed Museum**, enjoy the **Kimchi DIY making** and experience the Hanbok. Enjoy shopping at **Dongdaemun Market**.
- 04 SEOUL** (Breakfast/Lunch)  
Enjoy shopping at **Ginseng Shop, Cosmetic Shop, Hugaibo Shop**. Then, visit **Gyeongbokgeum Palace** which was the main royal palace of the Joseon dynasty built in 1395, **Blue House** (Out view), **Bukchon Hanok Village** is a Korean traditional village in Seoul, shopping at **Myeongdong, Namsan Park with Love Lock, N Seoul Tower** (exclude visit the tower).
- 05 SEOUL - DEPARTURE** (Breakfast)  
Depart Seoul, transfer to airport.

## Hotel Description (for guideline only)



### LUCEBRIDGE - 3★

23, Magokdong-ro 4-gil, Gangseo-gu\_Seoul 07803

Tel: +82 2-2600-8300

<http://www.lucebridge.com/kor/index.do>

Located Mario Outlet is 10 km from Hotel Lucebridge, while Noryangjin Fisheries Wholesale Market is 11 km away. Gimpo International Airport is 3 km from the property.



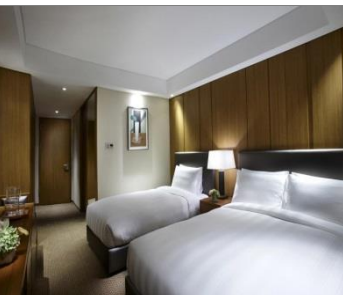
### COOP CITY - 3★

19, Gyeongin-ro 20ga-gil, Guro-gu, Guro-Gu, 09271 Seoul

Tel: +82 2-6210-1000

<http://www.mybmkkorea.com/kor/index.do>

Located less than a 1-minute walk from Oryu-dong Station, Co'opcit Hotel Stayco. 8 km from Gimpo International Airport and 12 km from the National Museum of Korea. It takes 10 minutes by car to reach the popular Mario Shopping Outlets.



### LOTTE CITY GURO - 4★

300, Digital-ro, Guro-gu, Guro-Gu, 08379 Seoul

Tel: +82 2-6210-1000

<http://www.lottehotel.com/city/guro/ko/Default.asp>

Located in the Guro Digital Complex that offers a variety of shops and restaurants, a 15-minute walk to Mario Outlet Shopping Mall. Gimpo Airport is a 40-minute drive away.

## TERMS & CONDITIONS

Passengers are deemed to have read, understood and accepted the following:-

### Package Price

Quoted in Ringgit Malaysia (MYR) and payment in Ringgit Malaysia (RM). Validity of prices is seasonal and subject to change without prior notice. Child rates are applicable when child are occupying a room with at least two adult.

### Deposit & Payment

A deposit of RM 500 per person is required when booking is made (subject to change based on travel dates). Receipt for deposit is valid for three (3) months from the date of issued. The deposit forms part of your final payment. Balance (final payment) must be made 30 days prior to departure (subject to confirmation of tour package). Failure to comply with this may result in an automatic cancellation of your reservations and forfeiture of your deposit.

### Accommodation

Bedding various from hotel to hotel, but the following usually apply:-

Single – consist 1 Queen Bed

Double – consist 1 Queen/King Bed

Twin – consist 2 Single Beds

Triple – consist 1 Double Bed & 1 rollaway bed / 3 Single beds

If a rollaway bed is required, extra charge applies. Most hotels will not put more than one rollaway in a room. Baby cots can be requested in advance and if extra charge applies, passenger must pay directly to hotel.

### Hotel Check In/Out Times

Standard check in time is after 1500hrs and check out is before 1100hrs.

### Amendment Charges

An administrative fee of RM100 will be charged for each subsequent amendment made after the confirmation. Any other cost arising from the amendment will be borne by the passenger. No amendment can be made within 30 days prior to departure. A change on the entire booking is considered as a cancellation and is subject to cancellation charges.

### Cancellation Charges

You may cancel your booking at any time. Cancellation must be made in writing to avoid any misunderstanding. If your cancellation is received by the Company more than 30 days prior to your departure, an administration fee of 15% of tour price per person will be levied. If your notice of cancellation is received less than 30 days prior to departure, the following cancellation charges will apply.

### Cancellation Received Cancellation Fee

Between 29 to 16 days prior to departure: 25% of tour price

Between 15 to 08 days prior to departure: 50% of tour price

Between 7 to departure day (No-Show): 100% of tour price

### Refund

No refund will be made for unused tickets or any other unutilized portion of the inclusions. Request for refund as a result of changes to the package must make in writing and an administrative fee of RM100 per person applies in additional to the supplier's cancellation fee. Refunds are payable only through the original booking agent.

### General Information

The company reserves the right to substitute or alter similarly priced accommodation, services and itineraries when necessary and there shall be no refund in such situation.

### Responsibility

The company acts only as an agent and does not manage or control or operate any suppliers of services. The Company assumes no liability for any loss, injury, damage, accident, delay or irregularity which may cause by these events - Acts of God, natural disasters, civil & military disorders, industrial disputes and any cause beyond the reasonable control of any company or person engaged in carrying out the arrangements made.

### Reservations

All reservations are subject to space availability and confirmation.

### Customer's Responsibilities

- Travel Insurance - a coverage to cover medical expenses arising through illness or accident prior to or during the holiday and loss of the holiday and loss of holiday monies cancellation or curtailment of holiday for insurable reasons.
- Passport & Visas - to be in possession of a valid passport and whatever necessary immigration documentation may be required by the country (ies) for the duration of the holiday. Passport must have minimum validity of at least six [6] months from the date of your return to Malaysia.

### Visa

Tourist visa is not required for Malaysian passport holder for a stay up to 90days.