

5  
DAYS

# DANANG – BANA HILLS *(Overnight)*

VIETNAM

Private Tour

Validity: **May05– December15, 2026****FROM RM 2470 pp**

- Price Per Person in RM
- Daily Departure
- Minimum 02 Adults
- Land Tour Package Only

**PRIVATE TOUR**

- Price Per Person in RM
- Daily Departure
- Minimum 02 Adults
- Land Tour Package Only

**PRICE INCLUSIONS**

- ✓ Return private transfer airport-hotel-airport
- ✓ 4 nights accommodation
- ✓ 4 breakfasts, 4 lunches and 3 dinners at local restaurant
- ✓ Tours as specified in the itinerary with English speaking local guide
- ✓ Gratuities to guide and driver

**PRICE EXCLUSIONS**

- ✗ Airfare & applicable airport taxes
- ✗ Personal Incidental Expenses

**REMARKS**

- ❖ Tour prices and itinerary quoted are subject to change
- ❖ Peak season surcharge may apply (To be advised upon booking)
- ❖ Subject to room availability
- ❖ No refund for un-utilized tours or services
- ❖ Terms & Conditions Apply

**VISA**

Tourist visa not required for Malaysian passport for a stay up to 30days

**TRAVEL INSURANCE**

**AIG** Travel Insurance provider:  
**AIG Malaysia Insurance Berhad**

24Apr'26/LC/197301000040/ 13564 / KKKP 0421

HOTEL (or similar)	Twin / Triple Sharing			Single
	2 Adults	3-4 Adults	5-7 paxs	Supplement
A	2470	2310	1890	875
B	2755	2595	2190	1230

**Mercure French Village – Weekend surcharge RM50 per person**

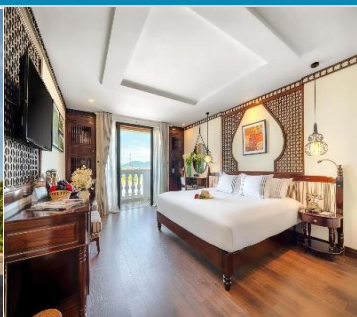
Hotel Cat.	Hoi An (1N)	Da Nang (2N)	Ba Na Hill (1N)
A	Qualia De Hotel 4★	Avatar Hotel 4★	Mercure French Village
B	Bellerive Hoi An Resort 5★	Nalod Da Nang 5★	

**DAY ITINERARY (Subject to change)**

<b>01</b>	<b>DANANG - ARRIVAL – HUI AN</b> <span style="float: right;"><b>(Lunch/ Dinner)</b></span> Arrive Danang, meet and transfer to Hui An. Arrive <b>Cam Thanh Coconut Village</b> , experience the traditional fishing techniques and learn to row the unique Vietnamese bamboo basket boat. Back to Hui An, proceed a walking tour, visit <b>Chinese Assembly Hall &amp; Temples, Old Houses &amp; Japanese Covered Pagoda Bridge, Old House of Tan Ki (or Phung Huang), Museum of Folk Cultures</b> and <b>Hoian night market</b> .
<b>02</b>	<b>HUI AN – DANANG</b> <span style="float: right;"><b>(Breakfast/ Lunch /Dinner)</b></span> After breakfast, check-out. Visit <b>Thanh ha Ceramic Village</b> and <b>Kim Bong Carpentry Village</b> . Transfer to visit <b>Marble Mountain</b> . A complex of five limestone peaks. Visit <b>Tam Thai Pagoda</b> and <b>Linh Ung Pagoda</b> . Continue journey to Da Nang. After dinner, transfer to hotel to check-in.
<b>03</b>	<b>DANANG – BA NA HILLS</b> <span style="float: right;"><b>(Breakfast/Lunch)</b></span> Depart to <b>Ba Na Hills</b> station (40km from Da Nang city), take the cable to the top of the mountain. Visit the latest attraction 150m long <b>Golden Bridge (Cau Vang)</b> . <b>L’Jardin Zone</b> , the French architecture building, Old French villas and the <b>Mountain Peak</b> (at height of 1,487 m). After lunch, enjoy the games at <b>Fantasy Park</b> , the third biggest indoor games zone in Vietnam. Overnight at Ba Na Hill.
<b>04</b>	<b>BA NA HILL – DANANG</b> <span style="float: right;"><b>(Breakfast/ Lunch /Dinner)</b></span> After breakfast, experience the morning activities. Own explorer the <b>Golden Bridge without the crowds</b> , stroll through le Jardin D’Amour Flower Garden and Frence Village. Check-out and transfer back to Da Nang, visit <b>Son Tra Peninsular</b> with <b>Linh ung Pagoda, my Khe Beach, DHC Marina Bay</b> and <b>Dragon Bridge</b> . Evening, explore the Son Tra night market.
<b>05</b>	<b>DANANG - DEPARTURE</b> <span style="float: right;"><b>(Breakfast)</b></span> Depart Danang, transfer to airport.

## HOTEL DESCRIPTION (for guideline only)

### HOI AN



#### QUALIA DE HOTEL – Local 4★ Boutique

<https://qualiadehotelhoian.com/>

46 Rooms - Located 19 mi from Da Nang International Airport, the hotel is near attractions such as Hoi An Historic Museum (17-minute walk) and Japanese Covered Bridge (1.1 mi).



#### BELLERIVE HOI AN RESORT – Local 5★

<https://bellerivehoian.com/>

178 Rooms - Located 17 mi from Da Nang International Airport, the resort is a 16-minute walk from Cua Dai Beach.

### DA NANG



#### AVATAR HOTEL – Local 4★

<https://avatar-danang.danang-hotels.com/en/>

108 Rooms - Located 10 mins to Dragon Bridge & 15 mins to My Khe Beach. The nearest airport is Da Nang International, 3.1 mi.

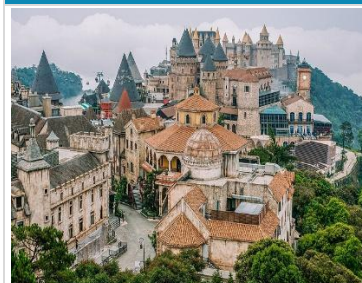


#### NALOD DA NANG – Local 5★

<https://nalod.com.vn/>

250 Rooms - Located 10 mins to Dragon Bridge & 15 mins to My Khe Beach. The nearest airport is Da Nang International, 3.1 mi.

### BA NA HILL



#### MERCURE FRENCE VILLAGE – Local 4★

<https://www.mercure-danang-banahills-french-village.com/>

461 Rooms - Located at Bana Hill. nearest airport is Da Nang International Airport, which is 14 mi from the property.

## TERMS & CONDITIONS

Passengers are deemed to have read, understood and accepted the following:-

### Package Price

Quoted in Ringgit Malaysia (RM) and subject to exchange rate fluctuations. Validity of prices is seasonal and subject to change without prior notice. Child rates are applicable when child is occupying a room with at least two adults.

### Deposit & Payment

A deposit of RM200 per person is required when booking is made. Receipt for deposit is valid for three (3) months from the date of issue. The deposit forms part of your final payment. Balance (final payment) must be made 15 days prior to departure. Failure to comply with this may result in an automatic cancellation of your reservations and forfeiture of your deposit.

### Accommodation

Bedding varies from hotel to hotel, but the following usually applies:-

Single Occupancy: comprises 1 Queen/1 Twin Bed

Double Occupancy: comprises 1 Queen/King Bed

Twin Occupancy: comprises 2 Single Beds

Triple Occupancy: comprises 3 Single / 1 Double + Rollaway Bed

If a rollaway bed is required, an extra charge applies. Most hotels will not put more than one rollaway in a room. Baby cots can be requested in advance and if extra charge applies, passenger must pay directly to hotel.

**Gratuities:** Compulsory US\$6 per person per day for driver and guide.

**Hotel Check-In/Out Times :** Standard check-in time is after 1500hrs and check-out is before 1100hrs

### Amendment Charges

An administrative fee of RM100 will be charged for each subsequent amendment made after the confirmation. Any other cost arising from the amendment will be borne by the passenger. No amendment can be made within 15 days prior to departure. A change on the entire booking is considered a cancellation and is subject to cancellation charges.

### Cancellation Charges

You may cancel your booking at any time. Cancellation must be made in writing to avoid any misunderstanding. If your cancellation is received by the Company more than 30 days prior to your departure, an administration fee of RM100 per person will be levied. If your notice of cancellation is received fewer than 30 days prior to departure, the following cancellation charges will apply:

#### Cancellation Received Cancellation Fee

Between 29 to 16 days prior to departure: Forfeiture of the Deposit

Between 15 to 08 days prior to departure: 50% of tour price

Between 7 days to departure day (No-Show): 100% of tour price

### Refund

No refund will be made for unused tickets or any other unutilized portion of the inclusions. Request for refund as a result of changes to the package must be made in writing and an administrative fee of RM100 per person applies in addition to the supplier's cancellation fee. Refunds are payable only through the original booking agent.

### General Information

The company reserves the right to substitute or alter similarly-priced accommodation, services and itineraries when necessary and there shall be no refund in such situation.

### Responsibility

The company acts only as an agent and does not manage, control or operate any suppliers of services. The Company assumes no liability for any loss, injury, damage, accident, delay or irregularity which may be caused by these events – Acts of God, natural disasters, civil & military disorders, industrial disputes and any cause beyond the reasonable control of any company or person engaged in carrying out the arrangements made.

### Reservations

All reservations are subject to space availability and confirmation.

### Customer's Responsibilities

- Travel Insurance – to cover medical expenses arising through illness or accident prior to or during the holiday, and loss of the holiday and loss of holiday monies, cancellation or curtailment of holiday for insurable reasons.
- Passport & Visas – to be in possession of a valid passport and whatever necessary immigration documentation may be required by the country(ies) for the duration of the holiday.

### Visa Application

Tourist visa is not required for Malaysian passport for a stay up to 30days