

4D3N SURABAYA DISCOVERY

Surabaya – Mt. Bromo – Malang – Surabaya

INDONESIA

FROM RM **2070**pp

VALIDITY 2019
JAN01 - DEC20

Block-Out Dates: Jun10-20

PRIVATE TOUR

- Price Per Person in RM
- Daily Departure
- Minimum 02 Adults
- Land Tour Package Only

PRICE INCLUSIONS

- ✓ Return transfer airport-hotel
- ✓ 3Nights hotel accommodation with daily breakfast
- ✓ Lunch & dinner at local restaurant
- ✓ Sightseeing as specified in the itinerary with English speaking local guide
- ✓ Mineral water during tours

PRICE EXCLUSIONS

- ✗ Airfare & applicable airport taxes
- ✗ Personal Incidental Expenses
- ✗ Optional Tours
- ✗ Gratuities to guide & driver – Suggest RM10 per person per day (pay direct)

REMARKS

- ❖ Tour prices and itinerary quoted are subject to change
- ❖ Valid for **Asia Passport Holder Only**
- ❖ Peak season surcharge may apply (To be advised upon booking)
- ❖ Subject to room availability
- ❖ No refund for un-utilized tours or services
- ❖ Terms & Conditions Apply

VISA

Tourist visa not required for Malaysia passport for a stay up to 30days

TRAVEL INSURANCE

AIG Travel Insurance provider:
AIG Malaysia Insurance Berhad
12Dec18/SL/13564-K/KKKP.0421/2

Sunrise at Mt. Bromo

HOTEL CATEGORY	ADULT		CHILD [2-10YRS]		SURABAYA EXTN NIGHT Per Room Night + Breakfast	
	Twin/ Triple	Single Room	Extra Bed	No Bed	Single/ Twin	Triple
A	2070	2390	1460	1180	200	300
B	2190	2630	1750	1420	300	455

Mt Bromo Weekend (Friday or Saturday) surcharge: RM 60 person

Hotel Used (or similar class)

Category	Mt Bromo (1N)	Malang (1N)	Surabaya (1N)
A	Nadia Hotel (2★)	Swiss Belinn (3★)	Max One Hotel Tidar (3★)
B	Lava View (3★)	Atria Hotel / Harris (4★)	Mercure Surabaya (4★)

DAY	ITINERARY
01	SURABAYA – MT. BROMO (Lunch/ Dinner) Arrive Surabaya Airport, meet and greet by local guide and transfer to Cemorolawang Village at Bromo area. Check in hotel. The rest of the day at leisure.
02	MT BROMO – MALANG (Breakfast/Lunch/Dinner) 3.00am start Mt. Bromo tour using 4WD Jeep, to witness sunrise from Pananjakan view point. The tour will continue to the crater of Mt. Bromo crossing the sea sand. Arrive at Jeep parking area, the tour will conducted by pony riding (<i>own expenses approximately IDR150,000 per horse</i>) cross sea of sand to the rim of the crater and climb up 245 stairs. After enjoy the surrounding of Mt. Bromo, transfer back to hotel for breakfast and repacking. Next, transfer to Malang City.
03	MALANG - BATU TOUR – SURABAYA (Breakfast/Lunch/Dinner) Proceed to Batu City (40mins drive) visit Jatim Park II, Batu Secret Zoo, Transportation Museum and Apple Plantation . Return to Surabaya en-route stopover at Tanggulanin for leather home industry and Sidoarjo for shrimp crackers + Embroidery.
04	SURABAYA - DEPARTURE (Breakfast) Depart Surabaya, transfer to airport.

4D3N SURABAYA DISCOVERY

Surabaya – Mt. Bromo – Malang - Surabaya

Hotel Description (for guideline only)

MT BROMO



HOTEL NADIA - 2★

Jl. Raya Bromo km. 31 Sukapura, 67254 Bromo, Indonesia
Tel: 62-85- 232 612 985

<https://hotelnadia.wordpress.com/>

Strategic location, the Probolinggo bus terminal only takes a few minutes. About 13 km from Mount Bromo.



LAVA VIEW LODGE - 3★

Cemorolawang, Sukapura, Probolinggo, East Java, Indonesia
Tel: +62- 81-249 808 182

<http://lavaview.lavaindonesia.com/>

28 rooms – Located direct view to the crater and Sea of Sand, one of the nearest lodge from Mt. Bromo view.

MALANG



SWISS BELINN MALANG - 3★

Jalan Veteran 8A , Malang, 65145, Indonesia
Tel: +62-341- 550368

<https://www.swiss-belhotel.com/en-gb/swiss-belinn-malang>

203 rooms - Located in the heart of the historic city of Malang, easy access to the city's business district, 5-minute stroll from Malang Town Square AND short drive from Abdul Rahman Saleh Airport.



ATRIA HOTEL MALANG - 4★

Jl. Letjen S. Parman, No. 87 – 89, Malang, Indonesia
Tel: +62-341- 4099-99

<https://www.parador-hotels.com/en/hotels/intro/show/55/60/70/atria-hotel-malang/>

175 rooms - Located on the main street in Malang city, approximately 20 minutes from Abdul Rachman Saleh Airport, 15 minutes from downtown, 15 minutes from Brawijaya University and also shopping area.

SURABAYA

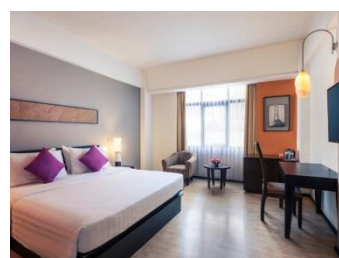


MAXONE HOTELS.COM at TIDAR - 3★

Jalan Tidar No 5, Tembok Dukuh, Sawahan, Surabaya, 60251 Indonesia
Tel: +62-31-99001877

<https://www.maxonetidarsurabaya.com/>

102 rooms Located in Surabaya, Pasar Genteng is 1 km and Tunjungan Plaza is 1.5 km away. The nearest airport is Juanda International Airport, 15 km from the hotel.



MERCURE HOTEL SURABAYA - 4★

Jl Raya Darmo 68 – 78, 60264, Surabaya, Indonesia
Tel: +62-31-5623000

<https://www.accorhotels.com/gb/hotel-6155-mercure-surabaya/index.shtml>

257 rooms - Located in the central business district of Surabaya. 30-minute drive to Juanda International Airport. Less than 10 minutes walk from Tunjungan Plaza and Gubeng Railway Station

TERMS & CONDITIONS

Passengers are deemed to have read, understood and accepted the following:-

Package Price

Quoted in Ringgit Malaysia (RM) and subject to exchange rate fluctuations. Validity of prices is seasonal and subject to change without prior notice. Child rates are applicable when child is occupying a room with at least two adults.

Deposit & Payment

A deposit of RM200 per person is required when booking is made. Receipt for deposit is valid for three (3) months from the date of issue. The deposit forms part of your final payment. Balance (final payment) must be made 15 days prior to departure. Failure to comply with this may result in an automatic cancellation of your reservations and forfeiture of your deposit.

Accommodation

Bedding varies from hotel to hotel, but the following usually applies:-

Single Occupancy: comprises 1 Queen/1 Twin Bed

Double Occupancy: comprises 1 Queen/King Bed

Twin Occupancy: comprises 2 Single Beds

Triple Occupancy: comprises 3 Single / 1 Double + Rollaway Bed

If a rollaway bed is required, an extra charge applies. Most hotels will not put more than one rollaway in a room. Baby cots can be requested in advance and if extra charge applies, passenger must pay directly to hotel.

Gratuities: Guideline: HKD50 per person per day for driver and guide.

Hotel Check-In/Out Times : Standard check-in time is after 1500hrs and check-out is before 1100hrs

Amendment Charges

An administrative fee of RM100 will be charged for each subsequent amendment made after the confirmation. Any other cost arising from the amendment will be borne by the passenger. No amendment can be made within 15 days prior to departure. A change on the entire booking is considered a cancellation and is subject to cancellation charges.

Cancellation Charges

You may cancel your booking at any time. Cancellation must be made in writing to avoid any misunderstanding. If your cancellation is received by the Company more than 30 days prior to your departure, an administration fee of RM100 per person will be levied. If your notice of cancellation is received fewer than 30 days prior to departure, the following cancellation charges will apply:

Cancellation Received Cancellation Fee

Between 29 to 16 days prior to departure: 30% of tour price

Between 15 to 08 days prior to departure: 50% of tour price

Between 7 days to departure day (No-Show): 100% of tour price

Refund

No refund will be made for unused tickets or any other unutilized portion of the inclusions. Request for refund as a result of changes to the package must be made in writing and an administrative fee of RM100 per person applies in addition to the supplier's cancellation fee. Refunds are payable only through the original booking agent.

General Information

The company reserves the right to substitute or alter similarly-priced accommodation, services and itineraries when necessary and there shall be no refund in such situation.

Responsibility

The company acts only as an agent and does not manage, control or operate any suppliers of services. The Company assumes no liability for any loss, injury, damage, accident, delay or irregularity which may be caused by these events – Acts of God, natural disasters, civil & military disorders, industrial disputes and any cause beyond the reasonable control of any company or person engaged in carrying out the arrangements made.

Reservations

All reservations are subject to space availability and confirmation.

Customer's Responsibilities

- Travel Insurance – to cover medical expenses arising through illness or accident prior to or during the holiday, and loss of the holiday and loss of holiday monies, cancellation or curtailment of holiday for insurable reasons.
- Passport & Visas – to be in possession of a valid passport and whatever necessary immigration documentation may be required by the country(ies) for the duration of the holiday.

Visa Application

Tourist visa is not required for Malaysian passport for a stay up to 30days.