

# 4D3N SIEM REAP / ANGKOR WAT



Angkor Wat

## CAMBODIA

FROM RM **1450** pp

VALIDITY **2018 – 2019**  
OCT – MAR

### PRIVATE TOUR

- Price Per Person in RM
- Daily Departure
- Minimum 02 Adults
- Land Tour Package Only

### PRICE INCLUSIONS

- ✓ Return private transfer airport- hotel
- ✓ 3nights stay at your selected hotel with daily breakfast
- ✓ Meals as per itinerary (lunch & dinner at local restaurant)
- ✓ Sightseeing tour + entrance fees with English speaking local guide
- ✓ Drinking water during the tours

### PRICE EXCLUSIONS

- ✗ Airfare & applicable airport taxes
- ✗ Personal Incidental Expenses
- ✗ Gratuities to guide & driver – Compulsory USD5 per person per day (pay direct)

### REMARKS

- ❖ Tour prices and itinerary quoted are subject to change
- ❖ Peak season surcharge may apply (To be advised upon booking)
- ❖ Subject to room availability
- ❖ Maximum room capacity: 3Adults or 2 adults + 1 child
- ❖ No refund for un-utilized tours or services
- ❖ Terms & Conditions Apply

### VISA

Tourist visa not required for Malaysia passport holder for a stay up to 30days

### TRAVEL INSURANCE

**AIG** Travel Insurance provider:  
AIG Malaysia Insurance Berhad

090ct'18/LC/13564-K/KKKP0421/0422

HOTEL CATEGORY	ADULT			CHILD (2-11yrs)	
	Twin Share	Triple Share	Single Room	Extra Bed	No Bed
4★ Angkor Riviera / Silk D'Angkor Boutique	1450	1320	1780	1450	1080
4★ Treasure Oasis Hotel / Spring Palace Boutique	1510	1390	1920	1510	1150
5★ Prince D'Angkor Hotel / Model Angkor Resort	2020	1900	2950	2020	1520

Hotel	Peak Season Surcharge		Compulsory Gala Dinner (Per Person)	
	Dates	Per Room Night	Christmas Eve (24Dec'18)	New Year Eve (31Dec'18)
			Pax	Pax
Angkor Riviera	Dec24-25,31'18; Feb01-05'19	50	200	200
Silk D'Angkor	Dec20'18-Jan05'19; Feb01-15'19	50	NA	NA
Spring Palace Boutique	Dec20'18-Jan10'19; Feb04-10'19	50	225	225
Treasure Oasis	TBA			
Prince D'Angkor	Dec27'18-Jan05'19; Feb02-13'19 <i>*Lunar New Year dinner –To be advised</i>	50	300	495
Model Angkor	Dec20'18-Jan05'19; Feb01-15'19	150	NA	NA

DAY	ITINERARY
01	<b>SIEM REAP – ARRIVAL</b> (Lunch/ Dinner) Arrive Siem Reap, visit the <b>Angkor Silk Farm</b> where collated in Puok, 16 km from Siem Reap, exhibition on silk and its process and the “ <b>Les Artisans d'Angkor - Chantiers Ecoles</b> ” of Siem Reap renowned woodworking, stone carving and polychrome workshops. Afternoon visit the <b>Cambodian Cultural Village</b> : A unique, sprawling cultural attraction, intended to introduce the visitor to Cambodian culture and history.
02	<b>SIEM REAP</b> (Breakfast/Lunch/Dinner) After breakfast, proceed to <b>Angkor Thom</b> – the great city of the ancient Khmer temple ( <b>Angkor Thom Temple South Gate, Bayon Temple, Elephants Terrace &amp; Leper King Terrace, Royal Palace and Ta-Prom</b> ). After lunch, continue to <b>Angkor Wat Temple</b> – one of the seven greatest architectural wonders of the world, built in between the 9 <sup>th</sup> – 13 <sup>th</sup> century and visit to <b>Baheng Hill</b> for its beautiful sunset.
03	<b>SIEM REAP</b> (Breakfast/ Lunch/Dinner) Morning enjoy a 1 and ½ hour boat ride on <b>Tonle Sap lake</b> to visit the fishing floating villages that complete with schools, hospital, restaurants, Karaoke and the floating crocodile farm and Local Market. After lunch, visit to the <b>Khmer Ceramic &amp; Fine Arts Centre</b> to see the lost Cambodian art, pottery, ceramics & tableware. Enjoy a 1 hour <b>Traditional Khmer massage</b> and visit <b>Local Market</b> . Dinner with <b>Aspara Dancing Performance</b> .
04	<b>SIEM REAP – DEPARTURE</b> (Breakfast) Depart Siem Reap, private transfer to airport for departure.

# 4D3N SIEM REAP / ANGKOR WAT

## HOTEL DESCRIPTION (for guideline only)



### ANGKOR RIVIERA – 4★

828 Porkombor St, Krong Siem Reap, Cambodia

Tel: +855 63 969 333

<http://angkorriviera.com/>

191 rooms. Located centrally located in Siem Reap, overlooking Siem Reap River and the outdoor market. The hote is a 10-minute drive from Siem Reap International Airport.



### SILK D'ANGKOR BOUTIQUE – 4★

Charles De Gaulle, Krong Siem Reap 17252, Cambodia

Tel: +855 63 963 866

<https://silkdangkor.com/home/>

49 rooms. Located on the **main road** leading up to the world-renowned **Angkor Wat** 5 km away. Its 1.6 km from **Pub Street** and 200 m away from Angkor National Museum. Siem Reap - Angkor International Airport is 7 km from the property.



### TREASURE OASIS HOTEL – 4★

National Road No. 6, Sangkat Svay Dangkm, Krong Siem Reap, Kingdom of Cambodia, Krong Siem Reap, Cambodia

Tel: +855 63 969 797

<https://treasureoasishotel.com/>

83 rooms. Treasure Oasis Hotel is a 5-minute drive from Siem Reap town and 8 minutes away from Siem Reap international Airport. The hotel is situated 10 km away from Angkor.



### SPRING PALACE BOUTIQUE HOTEL – 4★

Siem Reap, Thmor Meas Rd, Krong Siem Reap 17254, Cambodia

Tel: +855 63 966 499

<http://springpalace.asia/>

43 rooms. Pub Street is 1.4 km from Spring Palace Boutique Hotel, while Angkor Wat is 8 km away. The nearest airport is Siem Reap - Angkor International Airport, 9 km away.



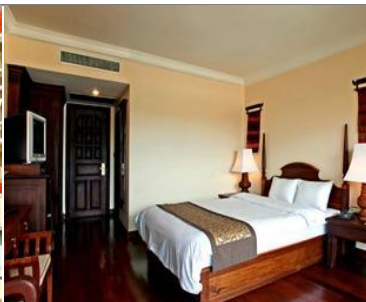
### MODEL ANGKOR RESORT– 5★

Bakheng Rd, Krong Siem Reap, Cambodia

Tel: +855 63 765 551

<https://modelangkorresort.com/>

33 rooms. Located Model Angkor Resort is 1.4 km from the vibrant **Pub Street** and 6.1 km from **Angkor Wat**. The nearest **airport**, Siem Reap International Airport is 6 km away.



### PRINCE D' ANGKOR – 5★

Sivatha Blv, Mondul II, Sngkat Svay Dengkok, Siem Reap 93136.

Tel: +855-63-763888

<http://www.princdangkor.com/>

195 rooms. Located in the heart of Siem Reap's historical, cultural, shopping and business districts. The hotel is only a 15 minutes' drive away from Siem Reap international airport and just 10 minutes from Angkor Wat.

## TERMS & CONDITIONS

Passengers are deemed to have read, understood and accepted the following:-

### Package Price

Quoted and payment in Ringgit Malaysia (RM). Validity of prices is seasonal and subject to change without prior notice. Child rates are applicable when child are occupying a room with at least two adult.

### Deposit & Payment

A deposit of RM 200 per person is required when booking is made (subject to change based on travel dates). Receipt for deposit is valid for three (3) months from the date of issued. The deposit forms part of your final payment. Balance (final payment) must be made 30 days prior to departure (subject to confirmation of tour package). Failure to comply with this may result in an automatic cancellation of your reservations and forfeiture of your deposit.

### Accommodation

Bedding various from hotel to hotel, but the following usually apply:-

Single – consist 1 Queen Bed

Double – consist 1 Queen/King Bed

Twin – consist 2 Single Beds

Triple – consist 1 Double Bed & 1 rollaway bed / 3 Single beds

If a rollaway bed is required, extra charge applies. Most hotels will not put more than one rollaway in a room. Baby cots can be requested in advance and if extra charge applies, passenger must pay directly to hotel.

### Hotel Check In/Out Times

Standard check in time is after 1500hrs and check out is before 1100hrs.

### Amendment Charges

An administrative fee of RM100 will be charged for each subsequent amendment made after the confirmation. Any other cost arising from the amendment will be borne by the passenger. No amendment can be made within 30 days prior to departure. A change on the entire booking is considered as a cancellation and is subject to cancellation charges.

### Cancellation Charges

You may cancel your booking at any time. Cancellation must be made in writing to avoid any misunderstanding. If your cancellation is received by the Company more than 30 days prior to your departure, an administration fee of 15% of tour price per person will be levied. If your notice of cancellation is received less than 30 days prior to departure, the following cancellation charges will apply.

### Cancellation Received Cancellation Fee

Between 29 to 16 days prior to departure: 25% of tour price

Between 15 to 08 days prior to departure: 50% of tour price

Between 7 to departure day (No-Show): 100% of tour price

### Refund

No refund will be made for unused tickets or any other unutilized portion of the inclusions. Request for refund as a result of changes to the package must make in writing and an administrative fee of RM100 per person applies in additional to the supplier's cancellation fee. Refunds are payable only through the original booking agent.

### General Information

The company reserves the right to substitute or alter similarly priced accommodation, services and itineraries when necessary and there shall be no refund in such situation.

### Responsibility

The company acts only as an agent and does not manage or control or operate any suppliers of services. The Company assumes no liability for any loss, injury, damage, accident, delay or irregularity which may cause by these events - Acts of God, natural disasters, civil & military disorders, industrial disputes and any cause beyond the reasonable control of any company or person engaged in carrying out the arrangements made.

### Reservations

All reservations are subject to space availability and confirmation.

### Customer's Responsibilities

- Travel Insurance - a coverage to cover medical expenses arising through illness or accident prior to or during the holiday and loss of the holiday and loss of holiday monies cancellation or curtailment of holiday for insurable reasons.
- Passport & Visas - to be in possession of a valid passport and whatever necessary immigration documentation may be required by the country (ies) for the duration of the holiday. Passport must have minimum validity of at least six [6] months from the date of your return to Malaysia.

### Visa

Tourist visa is not required for Malaysian passport for a stay up to 30days.