

3D2N BORACAY DISCOVERY



Boracay

PHILIPPINES

FROM RM **630**pp

VALIDITY 2018 – 2019
SEP-MAR

SEAT-IN-COACH TOUR

- Price Per Person in RM
- Daily Departure
- Minimum 02 Adults
- Land Tour Package Only

PRICE INCLUSIONS

- ✓ Return transfer Caticlan /Kalibo Airport-Boracay Island without guide (Between 19.01hrs-0659hrs, surcharge of RM50/way/car)
- ✓ 2Nights hotel stay with daily breakfast
- ✓ Sightseeing as specified in the itinerary with local English speaking driver guide

PRICE EXCLUSIONS

- ✗ Airfare & applicable airport taxes
- ✗ Personal Incidental Expenses
- ✗ Gratuities to guide & driver – Compulsory USD5 per person per day (pay direct)

REMARKS

- ❖ Tour prices and itinerary quoted are subject to change
- ❖ Peak season surcharge may apply (To be advised upon booking)
- ❖ Subject to room availability
- ❖ No refund for un-utilized services
- ❖ Terms & Conditions Apply

VISA

Tourist visa not required for Malaysia passport holder for a stay up to 30days

TRAVEL INSURANCE

AIG Travel Insurance provider:
AIG Malaysia Insurance Berhad

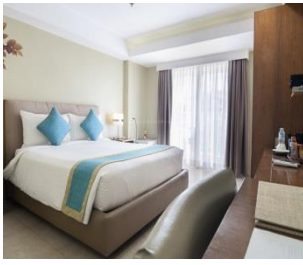
| HOTEL (or similar) Location – Station 2 | ADULT | | | Child (2-11yrs) | | EXTENSION NIGHT With Breakfast Per Room Night | |
|--------------------------------------------|---------------|-----------------|----------------|-----------------|-----------|-----------------------------------------------------|--------|
| | Twin Share | Triple Share | Single Room | Extra Bed | No Bed | Single/ Twin | Triple |
| 3★ BORACAY HAVEN RESORT | | | | | | | |
| Dec-Mar | 720 | 690 | 1120 | 690 | 380 | 400 | 550 |
| Sep-Nov | 630 | 630 | 930 | 630 | 350 | 300 | 460 |
| 4★ HENNAN LAGOON | | | | | | | |
| Nov05-Mar | 970 | 890 | 1620 | 890 | 510 | 650 | 860 |
| Sep-Nov04 | 900 | 850 | 1480 | 850 | 470 | 580 | 790 |
| 4★ THE DISTRICT BORACAY | | | | | | | |
| Oct-MAR | 1250 | 1120 | 2180 | 1120 | 650 | 930 | 1200 |
| Sep | 1160 | 1060 | 2020 | 1060 | 600 | 840 | 1110 |

Block Out Dates : Holy Week, Christmas, New Year and Chinese New Year

DAY ITINERARY

- | | | |
|-----------|------------------------------------------------------------------------------------------------------------------------------------------------------------------------------------------------------------------------------|------------------------------------|
| 01 | BORACAY – ARRIVAL Arrive Caticlan Airport (5mins by coach) / Kalibo Airport (1.5-2Hours by coach), coach transfer to Caticlan Jetty Port, takes 15-20mins boat to Boracay. Evening enjoy dinner with fire dancers. | (Dinner) |
| 02 | BORACAY ISLAND HALF DAY ISLAND HOPPING Cruise off the shores of Boracay in local Bangka boat and enjoy the beautiful sites around the island. | (Breakfast / Seafood Lunch) |
| 03 | BORACAY - DEPARTURE Depart Boracay Island, transfer to Caticlan/Kalibo Airport by boat and coach. | (Breakfast) |

HOTEL DESCRIPTION (for guideline only)



BORACAY HAVEN RESORT - 3★

Station 2, Brgy, Balabag Malay, 5600 Aklan, Philippines

Tel: 63-36-2885729

<https://www.boracayhaven-resort.com/>

62 rooms – Located at the heart of Station 2 where all the fun and action happens. Just 5 minutes from the world famous White Beach and D’Mall de Boracay.



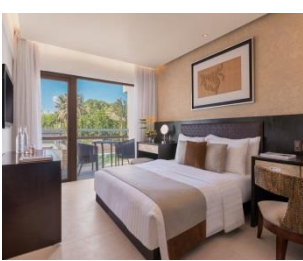
HENNAN LAGOON RESORT - 4★

Station 2, Main Road, Boracay island, Philippines

Tel: +66-36-2882828

<http://henann.com/boracay/henannlagoon/>

222 Rooms – Location at Station 2, along the main road, 3 minute walk from the famous White Beach, 15minute ferry ride to Caticlan Airport.



THE DISTRICT BORACAY – 4★

Station 2, Brgy, Balabag, Boracay Island, Malay, Aklan, Philippines

Tel: +63-36-288.2324 – 27

<http://www.thedistrictboracay.com/>

48 rooms - Prime location in Station 2 and a beach that is literally right outside its doorstep. It is about 120meters from D’Mall and about 5 km from Caticlan Jetty Port.

TERMS & CONDITIONS

Passengers are deemed to have read, understood and accepted the following:-

Package Price

Quoted and payment in Ringgit Malaysia (RM). Validity of prices is seasonal and subject to change without prior notice. Child rates are applicable when child are occupying a room with at least two adult.

Deposit & Payment

A deposit of RM 200 per person is required when booking is made (subject to change based on travel dates). Receipt for deposit is valid for three (3) months from the date of issued. The deposit forms part of your final payment. Balance (final payment) must be made 30 days prior to departure (subject to confirmation of tour package). Failure to comply with this may result in an automatic cancellation of your reservations and forfeiture of your deposit.

Accommodation

Bedding various from hotel to hotel, but the following usually apply:-

Single – consist 1 Queen Bed Double – consist 1 Queen/King Bed

Twin – consist 2 Single Beds Triple – consist 1 Double Bed & 1 rollaway bed / 3 Single beds

If a rollaway bed is required, extra charge applies. Most hotels will not put more than one rollaway in a room. Baby cots can be requested in advance and if extra charge applies, passenger must pay directly to hotel.

Hotel Check In/Out Times

Standard check in time is after 1500hrs and check out is before 1100hrs.

Amendment Charges

An administrative fee of RM100 will be charged for each subsequent amendment made after the confirmation. Any other cost arising from the amendment will be borne by the passenger. No amendment can be made within 30 days prior to departure. A change on the entire booking is considered as a cancellation and is subject to cancellation charges.

Cancellation Charges

You may cancel your booking at any time. Cancellation must be made in writing to avoid any misunderstanding. If your cancellation is received by the Company more than 30 days prior to your departure, an administration fee of 15% of tour price per person will be levied. If your notice of cancellation is received less than 30 days prior to departure, the following cancellation charges will apply.

Cancellation Received Cancellation Fee

Between 29 to 16 days prior to departure: 25% of tour price

Between 15 to 08 days prior to departure: 50% of tour price

Between 7 to departure day (No-Show): 100% of tour price

Refund

No refund will be made for unused tickets or any other unutilized portion of the inclusions. Request for refund as a result of changes to the package must make in writing and an administrative fee of RM100 per person applies in additional to the supplier's cancellation fee. Refunds are payable only through the original booking agent.

General Information

The company reserves the right to substitute or alter similarly priced accommodation, services and itineraries when necessary and there shall be no refund in such situation.

Responsibility

The company acts only as an agent and does not manage or control or operate any suppliers of services. The Company assumes no liability for any loss, injury, damage, accident, delay or irregularity which may cause by these events - Acts of God, natural disasters, civil & military disorders, industrial disputes and any cause beyond the reasonable control of any company or person engaged in carrying out the arrangements made.

Reservations

All reservations are subject to space availability and confirmation.

Customer's Responsibilities

- Travel Insurance - a coverage to cover medical expenses arising through illness or accident prior to or during the holiday and loss of the holiday and loss of holiday monies cancellation or curtailment of holiday for insurable reasons.
- Passport & Visas - to be in possession of a valid passport and whatever necessary immigration documentation may be required by the country (ies) for the duration of the holiday. Passport must have minimum validity of at least six [6] months from the date of your return to Malaysia.

Visa

Tourist visa is not required for Malaysian passport for a stay up to 30days.