

5D4N MONTREAL & QUEBEC CITY EXPERIENCE

2N Montreal, 2N Quebec City



Citadel, Quebec City

CANADA

FROM CAD **650**pp

VALIDITY **2018-19**
MAY01-APR30

SEAT-IN-COACH & RAIL TOUR

- Price Per Person in Canadian Dollar (CAD)
- Daily Departure
- Minimum 02 Adults
- Land Tour Package Only

PRICE INCLUSIONS

- ✓ Private transfer airport – hotel in Montreal
- ✓ Private transfer hotel-Airport in Quebec City
- ✓ Economy class VIA Rail The Corridor Montreal-Quebec City
- ✓ 4Nights accommodation at selected hotels
- ✓ Seat-in-coach sightseeing as per itinerary with English speaking commentary
- ✓ Provincial Taxes and Federal GST

PRICE EXCLUSIONS

- ✗ Airfare & applicable airport taxes
- ✗ Personal Incidental Expenses
- ✗ Gratuities to driver/guide – suggest CAD6 per person per day

REMARKS

- ❖ Tour prices and itinerary quoted are subject to change
- ❖ All payment in Ringgit Malaysia and subject to currency exchange
- ❖ Peak season surcharge may apply (To be advised upon booking)
- ❖ Subject to room availability
- ❖ No refund for un-utilized tours or services
- ❖ Terms & Conditions Apply

VISA

Tourist visa is required for Malaysia passport holder

www.vfsglobal.ca/canada/malaysia

TRAVEL INSURANCE

AIG Travel Insurance provider:
AIG Malaysia Insurance Berhad

SEASON	ADULT				Child [0-11Yrs]
	Twin Share	Triple Share	Quad Room	Single Room	No Bed
Standard Category					
MONTREAL – HOTEL FAUBOURG (Studio 2 Queen Beds)					
QUEBEC CITY – CHATEAU LAURIER (La Classique Room)					
May-Oct'18	790	680	630	1230	150
Nov-Dec'18	690	600	570	980	150
Jan-Apr'19	650	550	520	930	120
<i>Quebec city Fri & Sat Surcharge Per Person Per Night</i>					
Jan25-Feb10'19	50	35	25	95	N/A
Superior Category					
MONTREAL – DELTA HOTELS BY MARRIOTT MONTREAL (Guest Room)					
QUEBEC CITY – HOTEL PUR (Cambre Pur 2beds)					
May-Dec'18	880	530	330	1350	150
Jan-Apr'19	730	630	590	1150	120
<i>Montreal Peak Season Per Person Per Night</i>					
Aug03-05'18	105	70	55	205	N/A
Oct16-20'18	30	20	15	55	N/A

DAY ITINERARY

- 01 MONTREAL – ARRIVAL**
Arrive Montreal Airport, private transfer to hotel. Rest of the day at leisure.
- 02 MONTREAL**
3.5HRS HEART OF MONTREAL MOTORCOACH CITY TOUR (Daily Except Dec25 Jan01)
Some of the highlights of this fully-narrated tour are a stop at the beautiful Notre Dame Basilica (entrance not included), residential and financial districts, historic Old Montréal, an outside view of the Olympic Complex, the campus of McGill University and the panoramic view from an observation point on top of Mont Royal. The tour can be considered a complete tour of the city, as it will bring passengers by more than 200 points of interest.
- 03 MONTRAL 🇨🇦 QUEBEC CITY**
Montreal – Quebec City by VIA Rail The Corridor.
Note: Transfer hotel-train station-hotel excluded
- 04 QUEBEC CITY**
MAY-DEC: 2HRS QUEBEC CITY TOUR#1 (Daily Departure)
The tour provides a comprehensive orientation of historic and modern Québec City. You will see the Latin Quarter, the Plains of Abraham, the Citadel, the Fortifications, the National Assembly, Place Royale, the Basilica and other points of interest within Québec City. This tour is in English and French.
JAN-APR : Free Day
- 05 QUEBEC CITY – DEPARTURE**
Depart Quebec City, private transfer to airport.

5D4N MONTREAL & QUEBEC CITY EXPERIENCE

2N Montreal, 2N Quebec

Hotel Description (for guideline only)

MONTREAL

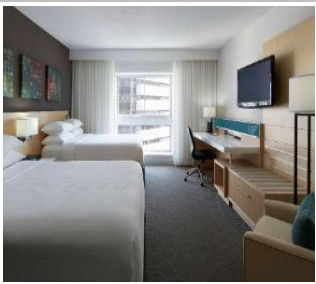


HOTEL FAUBOURG - 3★

155 Boulevard René-Lévesque Est Montréal, Québec H2X 3Z8 Canada
Tel: +1-866-398-7100

<http://www.hotelfaubourgmontreal.com/default-en.html>

161 Rooms – Located downtown Montreal and within walking distance from the subway station, jjust a short walk from the Quartier des Spectacles



DELTA HOTELS BY MARRIOTT MONTREAL - 4★

475 President-Kennedy Avenue, Montreal H3A 1J7 Canada
Tel: +1 514-286-1986

<http://www.marriott.com/hotels/travel/yuldb-delta-hotels-montreal/>

456rooms - Located just steps away from the Entertainment District and is next to Sherbrooke Street, lined with museums and shops. Within 5 minutes' walk of McCord Museum, the city's historic district is less than 2 km away.

QUEBEC CITY

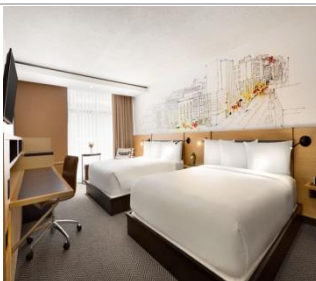
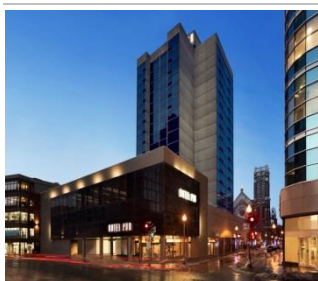


CHÂTEAU LAURIER - 3★

1220, Place George-V Ouest, Québec (Québec)G1R 5B8. CANADA
Tel : +1-418- 522-8108

<https://www.hotelchateaulaurier.com/en/>

282 rooms - Located in the heart of the city, on Parliament Hill, nestled between the Plains of Abraham and a few blocks from the Québec City Convention Center. Only a 35-minute drive from International Airport



HOTEL PUR - 4★

395 rue de la Couronne_Quebec_QC_
Tel: 1-866-599-6674

<http://www.starwoodhotels.com/tributeportfolio/property/overview/index.html?propertyID=4501>

242rooms - Located in the heart of Quebec's revitalized St Roch historic district, this hotel is near the hip downtown strip of shops, eateries, and nightlife

TERMS & CONDITIONS

Passengers are deemed to have read, understood and accepted the following:-

Package Price

Quoted in Canadian Dollars (CAD) and payment in Ringgit Malaysia (RM), subject to currency fluctuation. Validity of prices is seasonal and subject to change without prior notice. Child rates are applicable when child are occupying a room with at least two adult.

Deposit & Payment

A deposit of RM 500 per person is required when booking is made (subject to change based on travel dates). Receipt for deposit is valid for three (3) months from the date of issued. The deposit forms part of your final payment. Balance (final payment) must be made 30 days prior to departure (subject to confirmation of tour package). Failure to comply with this may result in an automatic cancellation of your reservations and forfeiture of your deposit.

Accommodation

Bedding various from hotel to hotel, but the following usually apply:-

Single – consist 1 Queen Bed Double – consist 1 Queen/King Bed
Twin – consist 2 Single Beds Triple & Quad - consist 2 Double Beds

If a rollaway bed is required, extra charge applies. Most hotels will not put more than one rollaway in a room. Baby cots can be requested in advance and if extra charge applies, passenger must pay directly to hotel.

Hotel Check In/Out Times

Standard check in time is after 1500hrs and check out is before 1100hrs.

Amendment Charges

An administrative fee of RM100 will be charged for each subsequent amendment made after the confirmation. Any other cost arising from the amendment will be borne by the passenger. No amendment can be made within 30 days prior to departure. A change on the entire booking is considered as a cancellation and is subject to cancellation charges.

Cancellation Charges

You may cancel your booking at any time. Cancellation must be made in writing to avoid any misunderstanding. If your cancellation is received by the Company more than 30 days prior to your departure, an administration fee of 15% of tour price per person will be levied. If your notice of cancellation is received less than 30 days prior to departure, the following cancellation charges will apply.

Cancellation Received Cancellation Fee

Between 29 to 16 days prior to departure: 25% of tour price

Between 15 to 08 days prior to departure: 50% of tour price

Between 7 to departure day (No-Show): 100% of tour price

Refund

No refund will be made for unused tickets or any other unutilized portion of the inclusions. Request for refund as a result of changes to the package must make in writing and an administrative fee of RM100 per person applies in additional to the supplier's cancellation fee. Refunds are payable only through the original booking agent.

General Information

The company reserves the right to substitute or alter similarly priced accommodation, services and itineraries when necessary and there shall be no refund in such situation.

Responsibility

The company acts only as an agent and does not manage or control or operate any suppliers of services. The Company assumes no liability for any loss, injury, damage, accident, delay or irregularity which may cause by these events - Acts of God, natural disasters, civil & military disorders, industrial disputes and any cause beyond the reasonable control of any company or person engaged in carrying out the arrangements made.

Reservations

All reservations are subject to space availability and confirmation.

Customer's Responsibilities

- Travel Insurance - a coverage to cover medical expenses arising through illness or accident prior to or during the holiday and loss of the holiday and loss of holiday monies cancellation or curtailment of holiday for insurable reasons.
- Passport & Visas - to be in possession of a valid passport and whatever necessary immigration documentation may be required by the country (ies) for the duration of the holiday. Passport must have minimum validity of at least six [6] months from the date of your return to Malaysia.

Visa

Tourist visa is required for Malaysian passport holder, apply visa online www.vfsglobal.ca/canada/malaysia