

# 9D8N SOUTH AFRICA & KRUGER NATIONAL PARK

Johannesburg –Kruger National Park-Johannesburg-Cape Town



Game Drive @ Kruger National Park

## SOUTH AFRICA

FROM RM **8390**pp

VALIDITY 2018-19  
NOV - MAR

**SEAT-IN-COACH TOUR**  
 • Price Per Person in RM  
 • Departure: Monday  
 • Minimum 02 Adults  
 • Land Tour Package Only

**PRICE INCLUSIONS**  
 ✓ Return seat-in-coach transfer airport-hotel-airport  
 ✓ 08Nights accommodation with daily breakfast  
 ✓ Meals as indicated in the itinerary  
 ✓ Seat-In-Coach tour as per itinerary with English speaking driver guide

**PRICE EXCLUSIONS**  
 ✗ International & domestic airfare  
 ✗ Applicable airport taxes  
 ✗ Personal Incidental Expenses  
 ✗ Gratuities to guide & driver : US\$6 per person per day – pay direct

**REMARKS**  
 ❖ Tour prices and itinerary quoted are subject to change  
 ❖ Not applicable during events /holiday long weekend, dates will be advised nearer to date  
 ❖ No triple sharing allowed  
 ❖ Child under 7 not allowed on this tour  
 ❖ Payment in Ringgit Malaysia (RM)  
 ❖ No refund for un-utilized tours or services  
 ❖ Terms & Conditions Apply

**VISA**  
 Tourist visa is not required for Malaysia Passport Holder for a stay up to 30 days

**TRAVEL INSURANCE**



21Sep18/SL/13564-K/KKKP.0421/2

**Departure : Monday**  
 2018 : Nov 05,12, 19, 26 ; Dec 10  
 2019 : Jan 07, 21, 28 ; Feb 04,11,18,25; Mar 04,11,18,25

Season	ADULT		CHILD (7-11YRS)
	Twin Share	Single Room	No Bed
Oct01-Nov30'18	8390	10790	6290
Dec01-15'18 ; Jan-Mar'19 <b>Block-Out : Dec01-31'18</b>	8590	11050	6450

Hotel used or similar class

KRUGER NATIONAL PARK (3N)	JOHANNESBURG (2N)	CAPE TOWN (3N)
Protea Kruger Gate	Holiday Inn Sandton - Rivonia Road	The Commodore

DAY	ITINERARY	
<b>01</b>	<b>JOHANNESBURG – ARRIVAL</b>	
<b>MON</b>	Upon arrival OR Tambo International Airport , meet and greet by our representative and transfer to hotel for check in (standard check in is 1500hrs onwards, rooms might not be ready for check in due to early arrival). <b>Half –day Afternoon Soweto Tour</b>	
<b>02</b>	<b>JOHANNESBURG / KRUGER NATIONAL PARK</b>	<b>(Breakfast/Dinner)</b>
<b>TUE</b>	Morning proceed to Mpumalanga region. Check in to hotel. Afternoon proceed for Kruger National Park game drive by closed touring vehicle.	
<b>03</b>	<b>KRUGER NATIONAL APRK</b>	<b>(Breakfast/Dinner)</b>
<b>WED</b>	Morning open vehicle game drive. Afternoon closed touring vehicle game drive.	
<b>04</b>	<b>KRUGER NATIONAL PARK</b>	<b>(Breakfast/Dinner)</b>
<b>THU</b>	<b>Mpumalanga Region Panorama Route Tour</b>	
<b>05</b>	<b>KRUGER NATIONAL PARK /JOHANNESBURG</b>	<b>(Breakfast)</b>
<b>FRI</b>	Shuttle transfer to Johannesburg OR Tambo International airport at approximately 1430hrs where the tour ends. Proceed to hotel by shuttle bus and check in (standard check in is 1500hrs onwards, rooms might not be ready for check in due to early arrival). The rest of the day at leisure.	
<b>06</b>	<b>JOHANNESBURG/CAPE TOWN</b>	<b>(Breakfast)</b>
<b>SAT</b>	Transfer to OR Tambo Airport for flight to Cape Town <b>(Airfare is not included)</b> . Upon arrival, meet by our representative and transfer to hotel for check in.	
<b>07</b>	<b>CAPE TOWN</b>	<b>(Breakfast)</b>
<b>SUN</b>	<b>Half day Cape Town City Tour</b> <i>Daily Departure between 0735 and 0830hrs; Return at ± 1230hrs</i>	
<b>08</b>	<b>CAPE TOWN</b>	<b>(Breakfast)</b>
<b>MON</b>	<b>Full Day Peninsula Tour</b> <i>Daily Departure between 0745 and 0845hrs; Return at ± 1800hrs</i>	
<b>08</b>	<b>JOHANNESBURG - DEPARTURE</b>	<b>(Breakfast)</b>
<b>TUE</b>	Depart Johannesburg, scheduled shuttle transfer to airport.	

# 9D8N SOUTH AFRICA & KRUGER NATIONAL PARK

Johannesburg –Kruger National Park-Johannesburg-Cape Town

## TOUR DESCRIPTION (Subject to change)

### DAY ITINERARY

#### 01 JOHANNESBURG – ARRIVAL

**MON** Upon arrival OR Tambo International Airport, meet and greet by our representative and transfer to hotel for check in (*standard check in is 1500hrs onwards, rooms might not be ready for check in due to early arrival*).

In the early noon, proceed for a **Half-Day Soweto Tour (Daily Departure between 1245hrs & 1315hrs)**

**Soweto**, acronym for South Western Township, is home to over 2 million people, who, despite living in crowded and chaotic conditions, have a tangible sense of community, one which ironically, the ordered, walled, elitist northern suburbs lack. Inside Soweto, we visit the **Kliptown Open Air Museum, Regina Mundi Church, Hector Pieteron Museum**. We pass **Mandela House**, and give you time to visit this fascinating little museum (own account). Finally we take you past the largest stadium in Africa, **Soccer City**, host of the 2010 FIFA World Cup Final. Soweto is unlike a suburb you've ever seen or been to, yet the history of struggle encapsulated here is a cornerstone of the South African Story.

#### 02 JOHANNESBURG / KRUGER NATIONAL PARK

(Breakfast/Dinner)

**TUE** This morning heading east to the **Mpumalanga region**. After freshening up at your lodge enter the world famous **Kruger National Park** and spend the afternoon **game viewing in your closed touring vehicle**. The park offers some of the best game viewing and wildlife opportunities in the world - and the visitor will soon appreciate the challenges of managing this unique reserve. Return to the lodge for dinner and overnight.

#### 03 KRUGER NATIONAL PARK

(Breakfast/Dinner)

**WED** The day begins with early morning coffee or tea, followed by a thrilling **open vehicle game drive (with English speaking Safari Guide)** through Kruger National Park with pre-packed breakfast. Your guide will endeavor to spoil you with sightings of the 'Big Five', general game and prolific bird life. Return to the lodge for lunch (own account) and a short siesta. In the afternoon we will journey once again through the magnificent expanses of the Kruger National Park, unrivalled in its diversity of flora and fauna. Enjoy an **afternoon of game viewing in your closed touring vehicle** pursuing the Big Five and other rare and endangered species. Optional (own account) open vehicle game drives are available. Return to the lodge for dinner and overnight.

#### 04 KRUGER NATIONAL PARK – MPUMALANGA PANORAMA ROUTE TOUR

(Breakfast/Dinner)

**THU** Enjoy breakfast before setting out to explore the magnificent **Panorama Route**, one of the most scenic routes in the region, offering glorious views, spectacular landscapes and exquisite waterfalls. Visit majestic sights including **God's Window, the Three Rondawels and Blyderiver Canyon** - the third largest canyon of its kind in the world, **Bourke's Luck Potholes and the charming village of Graskop**, one of the first gold mining camps in the country. Optional (own account) open vehicle game drives are available, should you prefer not to join the Panorama Route tour. Return to the lodge for dinner and overnight

#### 05 KRUGER NATIONAL PARK / JOHANNESBURG

(Breakfast)

**FRI** Enjoy breakfast before starting the return journey to Johannesburg. Arrive in Johannesburg, at OR Tambo International Airport, at approximately 14h30, where the tour ends on arrival. Transfer to your hotel by scheduled bus for check in, rest of the day is free at leisure.

#### 06 JOHANNESBURG / CAPE TOWN

(Breakfast)

**SAT** After breakfast, transfer to OR Tambo international airport for your flight to **Cape Town (Airfare is not included)**. Upon arrival in Cape Town International Airport, meet and greet by Thompsons Gateway Representative. Transfer to your hotel for check in (*please note rooms might not be ready for check in due to early arrival.*) Rest of the day is free at leisure. You might wish to proceed to Victoria & Alfred waterfront for some shopping

#### 07 CAPE TOWN- HALF-DAY CITY TOUR

(Breakfast)

**SUN** Summit the legendary **Table Mountain** before visiting the country's oldest building, **The Castle** followed by the **Company Gardens**, both historically fascinating and well conserved. Sense the depth of history as you drive past **Parliament Buildings, City Hall** and the **Slave Lodge** before moving up the cobblestoned hills to the **Malay Quarter** to marvel at the ice-cream colours of the quaint Bo-Kaap homes. Finally, trace the moves of a professional diamond cutter as he creates every girl's

#### 08 CAPE TOWN - FULL DAY PENINSULA TOUR

(Breakfast)

**MON** Cruise along **Millionaire's Paradise** from Clifton to Camps Bay and on to Llandudno before an up-close-and-personal Seal Island cruise (optional own account). Wind along Chapman's Peak Drive with lunch (own account) at **Cape of Good Hope** Section of the Table Mountain National Park before meandering back along the coast, visiting **Simon's Town and the penguin colony at Boulder's Beach**. End at Kirstenbosch Botanical Gardens in Summer or in Winter, Groot Constantia for a wine tasting and cellar tour.

#### 09 CAPE TOWN – DEPARTURE

(Breakfast)

**TUE** Depart Cape Town, scheduled transfer to airport.

# 9D8N SOUTH AFRICA & KRUGER NATIONAL PARK

Johannesburg –Kruger National Park-Johannesburg-Cape Town

Hotel Description (for guideline only)

## KRUGER NATIONAL PARK



### PROTEA KRUGER GATE - 4★

On the Sabi River at the Paul Kruger Gate, Portia Shabangu Road, Kruger National Park, Skukuza 1350 South Africa

Tel: +27 13 735 5671

<https://www.marriott.com/hotels/travel/mqpkg-protea-hotel-kruger-gate/?scid=bb1a189a-fec3-4d19-a255-54ba596febe2>

96rooms - Located along the Sabie River, our rustic and elegant lodge provides all the comforts of home, yet is just 100 meters from the Paul Kruger Gate of Kruger National Park

## JOHANNESBURG



### HOLIDAY INN SANDTON –RIVONIA ROAD 4★

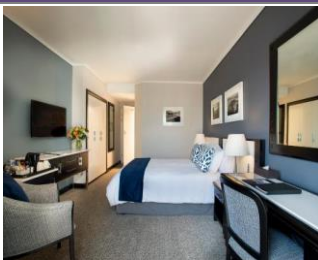
Rivonia Road 123, Sandton, Johannesburg 2196, South Africa

Tel: +27 11 282 0000

<https://www.ihg.com/holidayinn/hotels/us/en/johannesburg/sndrr/hoteldetail>

301 rooms - Located in the heart of Gauteng's corporate, financial and shopping mecca. 500 metres from the Sandton Gautrain station, which is 2 stops away from Johannesburg CBD.

## CAPE TOWN



### THE COMMODORE - 4★

Portwood Rd, Portwood Square, V&A Waterfront, Cape Town

Tel: +27 0 21415 1000

<https://www.legacyhotels.co.za/en/hotels/commodore/>

236rooms. Hotel overlooking the Victoria and Alfred Waterfront with views of Table Mountain, Robben Island, the Harbour and the Atlantic Ocean.



## TERMS & CONDITIONS

Passengers are deemed to have read, understood and accepted the following:-

### Package Price

Quoted and payment in Ringgit Malaysia (RM), subject to exchange rate fluctuations. Validity of prices is seasonal and subject to change without prior notice.

### Deposit & Payment

A deposit of RM500 Per person is required when booking is made (subject to change based on travel dates). Receipt for deposit is valid for three (3) months from the date of issued. The deposit forms part of your final payment. 50% of tour price is required upon confirmation of booking, balance/final payment must be made 50 days prior to departure. Failure to comply with this may result in an automatic cancellation of your reservations and forfeiture of your deposit.

### Accommodation

Bedding various from hotel to hotel, but the following usually apply. Triple sharing NOT allowed in South Africa.

Single – consist 1 Single/Queen Bed Double – consist 1 Queen/King Bed Twin – consist 2 Single Beds

### Hotel Check In Time

Standard check in time is 1400hrs onwards, Sun City hotel check in time is 1600hrs onwards. Early check in will be subject to room availability and surcharge apply

### Child Travel Policy

#### **New Regulations for families traveling with Children with effective from 01 Jun 2015:**

The Department of Home Affairs has put stricter controls in place for both South Africans and foreigners travelling to and from South Africa with children under the age of 18. These amended immigration regulations have come into effect in light of the growing issue of child trafficking.

From 1 Jun 2015 parents (from Visa exempted countries) will have to provide an *Unabridged Birth Certificate* (reflecting the particulars of the parents of the child) for each child travelling with them.

### Amendment Charges

An administrative fee of RM100 will be charged for each subsequent amendment made after the confirmation. Any other cost arising from the amendment will be borne by the passenger. No amendment can be made within 50 days prior to departure. A change on the entire booking is considered as a cancellation and is subject to cancellation charges.

### Cancellation Charges

You may cancel your booking at any time. Cancellation must be made in writing to avoid any misunderstanding. If your cancellation is received by the Company more than 50 days prior to your departure, an administration fee of RM200 of tour price per person will be levied. If your notice of cancellation is received less than 50 days prior to departure, the following cancellation charges will apply.

### Tours Cancellation Fee

Less than 50 days prior to departure: 50% of tour price

Less than 35days prior to departure: 70% of tour price

Less than 15days prior to departure: 100 % of tour price

Please note that all hotels in South and Southern Africa are extremely strict on cancellation policy, especially game lodges in South and Southern Africa, Sun International and Protea Hotels Properties. Cancellation charges especially in these case shall always be subject to the applicable supplier cancellation policy / fees.

### Refund

No refund will be made for unused tickets or any other unutilized portion of the inclusions. Request for refund as a result of changes to the package must make in writing and an administrative fee of RM100 per person applies in additional to the supplier's cancellation fee. Refunds are payable only through the original booking agent.

### General Information

The company reserves the right to substitute or alter similarly priced accommodation, services and itineraries when necessary and there shall be no refund in such situation.

### Responsibility

The company acts only as an agent and does not manage or control or operate any suppliers of services. The Company assumes no liability for any loss, injury, damage, accident, delay or irregularity which may cause by these events - Acts of God, natural disasters, civil & military disorders, industrial disputes and any cause beyond the reasonable control of any company or person engaged in carrying out the arrangements made.

### Customer's Responsibilities

- Travel Insurance - a coverage to cover medical expenses arising through illness or accident prior to or during the holiday and loss of the holiday and loss of holiday monies cancellation or curtailment of holiday for insurable reasons.
- Passport & Visas - to be in possession of a valid passport and whatever necessary immigration documentation may be required by the country (ies) for the duration of the holiday. Passport must have minimum validity of at least six [6] months from the date of your return to Malaysia.

### Visa

Tourist visa is not required for Malaysian passport holder for a stay up to 30days