

5D4N HANOI – HA LONG – NINH BINH



Ninh Binh River Cruise (Tam Coc)

VIETNAM

FROM RM **2350**pp

VALIDITY 2019
JAN01 – DEC 31

PRIVATE TOUR

- Price Per Person in RM
- Daily Departure
- Minimum 02 Adults
- Land Tour Package Only

PRICE INCLUSIONS

- ✓ Return transfer airport-hotel-airport
- ✓ 4Nights hotel accommodation with daily breakfast
- ✓ Lunch & dinner at local restaurant
- ✓ Sightseeing as specified in the itinerary with local English speaking guide
- ✓ 1 Bottle of mineral water per person per day

PRICE EXCLUSIONS

- ✗ Airfare & applicable airport taxes
- ✗ Personal Incidental Expenses
- ✗ Gratuities to guide & driver – Compulsory US\$6 per person per day (pay direct)

REMARKS

- ❖ Tour prices and itinerary quoted are subject to change
- ❖ Peak season surcharge may apply (To be advised upon booking)
- ❖ Subject to room availability
- ❖ No refund for un-utilized tours or services
- ❖ Terms & Conditions Apply

VISA

Tourist visa not required for Malaysian passport for a stay up to 30days

TRAVEL INSURANCE

AIG Travel Insurance provider:
AIG Malaysia Insurance Berhad

14Dec18/SL/13564-K/KKKP.0421/2

HOTEL CATEGORY	ADULT			CHILD (2-11Yrs)	
	Twin Share	Triple Share	Single Room	Extra Bed	No Bed
A	2350	1910	2900	1870	1170
B	2950	2530	4160	2360	1480

Block-Out Dates:

2019 : Jan01 / Feb02–10 / Apr13–15 / Apr27–May01 / Aug31–Sep02 / Dec24 - 25 & 31

Hotel Cat.	Hanoi (2N)	Halong (1N)
A	The Light 4★	Paradise Suite 4★
B	Nikko Hotel 5★ (From Jan01 2019, change name to Hotel Du Parc)	Wyndham Legend 5★

DAY ITINERARY

- 01 HANOI - ARRIVAL** (Dinner)
Arrive Hanoi, transfer to hotel for check-in. Evening transfer for **Water Puppet Show** before dinner.
- 02 HANOI – HA LONG** (Breakfast/Lunch/Dinner)
Hanoi city tour – **Ba Dinh Square, HCH Mausoleum & Residence, One Pillar Pagoda, Literature Temple** (the 1st University in Vietnam). After lunch transfer to **Ha Long** (4hours drive) via North Vietnam villages and rice fields.
- 03 HALONG BAY- HANOI** (Breakfast/Lunch/Dinner)
Take a half-day **Halong Bay** boat trip to view multi-shaped rocks and caves awarded as UNESCO Natural Heritage. Seafood lunch served on board. Return to Hanoi and visit **Hoan Kiem Lake, Turtle Tower, Ngoc Son Temple, The Huc Bridge**. Shopping at Ancient town.
- 04 HANOI - NINH BINH (TAM COC) EXCURSION** (Breakfast/Lunch/Dinner)
Travel to **Ninh Binh** province (2Hrs drive). Take a small boat cruising along the river thru the **three Beautiful Caves (Tam Coc)**, enjoy the beautiful nature and paddy field along the river. After lunch, transfer back to Hanoi.
- 05 HANOI - DEPARTURE** (Breakfast)
Depart Hanoi, transfer to airport.

5D4N HANOI – HA LONG – NINH BINH

HOTEL DESCRIPTION (for guideline only)

HANOI



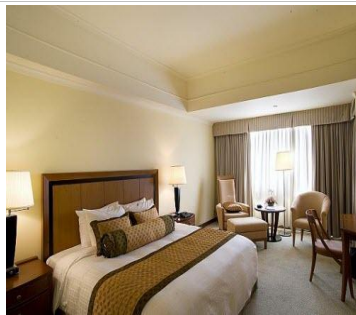
THE LIGHT HOTEL - 4★

128-130 Hàng Bông, Hoàn Kiếm, Hà Nội, Vietnam

Tel: +84- 934-611858

<http://www.hanoithelighthotel.com/>

89 Rooms - Set in the Hoan Kiem district, located in the heart of the Hanoi's Old Quarter and business districts. Just 300 m away from St. Joseph Cathedral and 21km from Noi Bai International Airport.



NIKKO HOTEL - 5★

(From Jan01, 2019 change name to Hotel Du Parc)

84 Tran Nhan Tong street, Hai Ba Trung district, Hanoi, Vietnam

Tel: +84-4-3822-3535

<http://www.hotelnikkohanoi.com.vn/>

257rooms - Located in the centre of the city offering fascinating views of the surrounding lakes and parklands. Nikko Hotel is within easy access of prominent offices, historical attractions and popular shopping areas.

HALONG



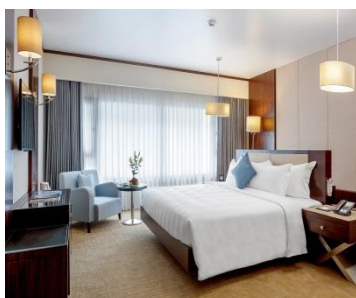
PARADISE SUITE HOTEL - 4★

Paradise Town, Tuan Chau Island, Halong Bay, Ha Long, Quảng Ninh 200000, Vietnam

Tel: +84 203 3815 088

<https://www.halongparadis suites.com/>

179 rooms – A boutique hotel located in the heart of Bai Chay tourist centre, a short drive from the beautiful Halong Bay, while the city centre is within walking distance.



WYNDHAM LEGEND HALONG - 5★

No 12. Ha Long Street, Bai Chay Ward, Ha Long City, Quang Ninh Province, Vietnam

Tel: +84-203-3636 555

<https://www.wyndhamhalong.com/>

217 rooms - Located in the most beautiful coastline of Ha Long, only a few minutes away by walk from the biggest Asia themed park - Sun World Ha Long Complex.

TERMS & CONDITIONS

Passengers are deemed to have read, understood and accepted the following:-

Package Price

Quoted in Ringgit Malaysia (RM) and subject to exchange rate fluctuations. Validity of prices is seasonal and subject to change without prior notice. Child rates are applicable when child is occupying a room with at least two adults.

Deposit & Payment

A deposit of RM200 per person is required when booking is made. Receipt for deposit is valid for three (3) months from the date of issue. The deposit forms part of your final payment. Balance (final payment) must be made 15 days prior to departure. Failure to comply with this may result in an automatic cancellation of your reservations and forfeiture of your deposit.

Accommodation

Bedding varies from hotel to hotel, but the following usually applies:-

Single Occupancy: comprises 1 Queen/1 Twin Bed

Double Occupancy: comprises 1 Queen/King Bed

Twin Occupancy: comprises 2 Single Beds

Triple Occupancy: comprises 3 Single / 1 Double + Rollaway Bed

If a rollaway bed is required, an extra charge applies. Most hotels will not put more than one rollaway in a room. Baby cots can be requested in advance and if extra charge applies, passenger must pay directly to hotel.

Gratuities: US\$6 per person per day for driver and guide.

Hotel Check-In/Out Times : Standard check-in time is after 1500hrs and check-out is before 1100hrs

Amendment Charges

An administrative fee of RM100 will be charged for each subsequent amendment made after the confirmation. Any other cost arising from the amendment will be borne by the passenger. No amendment can be made within 15 days prior to departure. A change on the entire booking is considered a cancellation and is subject to cancellation charges.

Cancellation Charges

You may cancel your booking at any time. Cancellation must be made in writing to avoid any misunderstanding. If your cancellation is received by the Company more than 30 days prior to your departure, an administration fee of RM100 per person will be levied. If your notice of cancellation is received fewer than 30 days prior to departure, the following cancellation charges will apply:

Cancellation Received Cancellation Fee

Between 29 to 16 days prior to departure: Forfeiture of the Deposit

Between 15 to 08 days prior to departure: 50% of tour price

Between 7 days to departure day (No-Show): 100% of tour price

Refund

No refund will be made for unused tickets or any other unutilized portion of the inclusions. Request for refund as a result of changes to the package must be made in writing and an administrative fee of RM100 per person applies in addition to the supplier's cancellation fee. Refunds are payable only through the original booking agent.

General Information

The company reserves the right to substitute or alter similarly-priced accommodation, services and itineraries when necessary and there shall be no refund in such situation.

Responsibility

The company acts only as an agent and does not manage, control or operate any suppliers of services. The Company assumes no liability for any loss, injury, damage, accident, delay or irregularity which may be caused by these events – Acts of God, natural disasters, civil & military disorders, industrial disputes and any cause beyond the reasonable control of any company or person engaged in carrying out the arrangements made.

Reservations

All reservations are subject to space availability and confirmation.

Customer's Responsibilities

- Travel Insurance – to cover medical expenses arising through illness or accident prior to or during the holiday, and loss of the holiday and loss of holiday monies, cancellation or curtailment of holiday for insurable reasons.
- Passport & Visas – to be in possession of a valid passport and whatever necessary immigration documentation may be required by the country(ies) for the duration of the holiday.

Visa Application

Tourist visa is not required for Malaysian passport for a stay up to 30days