

# 4D3N DA NANG – HUE – HOI AN



Hoi An Ancient Town

## VIETNAM

FROM RM **1610**pp

**VALIDITY 2019**  
JAN01 – DEC 31

### PRIVATE TOUR

- Price Per Person in RM
- Daily Departure
- Minimum 02 Adults
- Land Tour Package Only

### PRICE INCLUSIONS

- ✓ Return transfer airport-hotel-airport
- ✓ 3Nights hotel accommodation with daily breakfast
- ✓ Lunch & dinner at local restaurant
- ✓ Sightseeing as specified in the itinerary with local English speaking guide
- ✓ 1 Bottle of mineral water per person per day

### PRICE EXCLUSIONS

- ✗ Airfare & applicable airport taxes
- ✗ Personal Incidental Expenses
- ✗ Gratuities to guide & driver – Compulsory US\$6 per person per day (pay direct)

### REMARKS

- ❖ Tour prices and itinerary quoted are subject to change
- ❖ Peak season surcharge may apply (To be advised upon booking)
- ❖ Subject to room availability
- ❖ No refund for un-utilized tours or services
- ❖ Terms & Conditions Apply

### VISA

Tourist visa not required for Malaysian passport for a stay up to 30days

### TRAVEL INSURANCE

**AIG** Travel Insurance provider:  
AIG Malaysia Insurance Berhad

14Dec18/SL/13564K/KKKP.0421/2

HOTEL CATEGORY	ADULT			CHILD (2-11Yrs)	
	Twin Share	Triple Share	Single Room	Extra Bed	No Bed
A	1610	1350	2060	1290	810
B	2060	1800	2970	1650	1030

### Block-Out Dates:

2019 : Jan01 / Feb02–10 / Apr13–15 / Apr27–May01 / Aug31–Sep02 / Dec24 - 25 & 31

Hotel Cat.	Hue (1N)	Hoi An (1N)	Da Nang (1N)
A (4★)	Eldora	Vinh Hung Resort	Mandila Beach Hotel
B (5★)	Indochine Palace	Sunrise Beach Resort	DLG Hotel

### DAY ITINERARY

- 01 DA NANG - ARRIVAL – HUE (Dinner)**  
Arrival Da Nang airport, meet and greet and transfer Hue City. Check in hotel. The rest of the day at leisure.
- 02 HUE – HOI AN (Breakfast/Lunch/Dinner)**  
Tour start with a boat ride on **Perfume River** to visit **Thien Mu Pagoda**. Next you will visit **Imperial Citadel, Forbidden City** and **King Khai Dinh's Tomb**. Later transfer to Hoi An Ancient Town.
- 03 HOI AN – DA NANG (Breakfast/ Lunch/ Dinner)**  
Enjoy walking tour around **Hoi An** to explore the charming of this ancient town. Visit **Japanese Bridge, Phuc Kien (Hokkien) Assembly Hall, Tan Ky ancient house**, walking around to discover the daily life of Hoi Ann in a local market. After lunch, transfer to **Da Nang**. Arrival, visit **Marble Mountain (Ngu Hanh Son), Non Nuoc Stone Village** where the local skillful sculptors create many marble products. Lastly shopping at **Han Market**.
- 04 DA NANG - DEPARTURE (Breakfast)**  
Depart Da Nang, transfer to airport.

# 4D3N DA NANG – HUE – HOI AN

## HOTEL DESCRIPTION (for guideline only)

### HUE



#### ELDORA HOTEL - 4★

Boutique 60 Ben Nghe street, Hue city, Vietnam

Tel: +84 54 3866666

<http://www.eldorahotel.com/>

81 rooms – Located within close proximity to Citadel, an UNESCO listed World Heritage site, just step away from famous Trang Tien Bridge designed by Gustave Eiffel and other nearby attractions.



#### INDOCHINE PALACE - 5★

1 Hung Vuong Street, Hue City, Vietnam

Tel : +84- 234- 393 6666

<http://www.indochinepalace.com/>

222 rooms – Location in downtown Hue City, close to the Perfume River and the historic Royal Citadel. The property is located close to all amenities such as supermarkets, shops, banks, markets, public parks.

### HOI AN



#### VINH HUNG RIVERSIDE RESORT & SPA – 4★

111 Ngo Quyen, Hoi An, Quang Nam, Vietnam

Tel: +84- 510-3864 074

<http://www.vinhhungresort.com/>

89 rooms - Located on the bank of the romantic Thu Bon River, Vinh Hung Riverside Resort & Spa is within a 5-minute walk to the ancient town of Hoi An.



#### SUNRISE PREMIUM RESORT & SPA - 5★

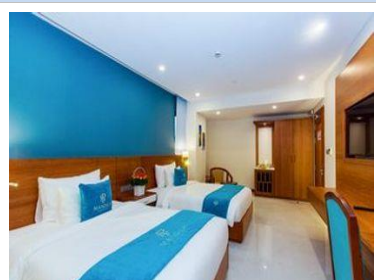
Au Co, Hoi An Town, Quang Nam Province, Vietnam

Tel: 84-235-3937777

<https://sunrisehoian.vn/>

Located - directly on Cua Dai Beach, 4 km from Hoi An Ancient Town and Hoi An City. It is within a 30-minute drive from Cham Museum and Marble Mountain. Da Nang International Airport and My Son Holyland are within a 40-minute drive away.

### DA NANG



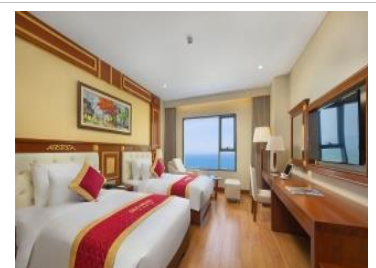
#### MANDILA BEACH HOTEL – 4★

218 Vo Nguyen Giap Street, Phuoc My Ward, Son Tra District, Danang City, Vietnam.

Tel: +84-236- 730 6666

<http://mandilabeachhotel.com/>

130 rooms – Located within a 5-minute walk of My Khe Beach. Vincom and Dragon Bridge are also within 3 km. Indochina Riverside Mall is 2.1 km away. Da Nang Airport, 6 km from the hotel.



#### DLG HOTEL - 5★

258 Vo Nguyen Giap Street, Phuoc My Ward, Son Tra District, Danang City, Vietnam

T: + 84-236-3925888

<https://dlghoteldanang.com/>

240 rooms - Situated near the beach in Da Nang, this hotel is close to My Khe Beach, Museum of Cham Sculpture and East Sea Park. Also nearby are Bac My An Beach and Pham Van Dong Beach

## TERMS & CONDITIONS

Passengers are deemed to have read, understood and accepted the following:-

### Package Price

Quoted in Ringgit Malaysia (RM) and subject to exchange rate fluctuations. Validity of prices is seasonal and subject to change without prior notice. Child rates are applicable when child is occupying a room with at least two adults.

### Deposit & Payment

A deposit of RM200 per person is required when booking is made. Receipt for deposit is valid for three (3) months from the date of issue. The deposit forms part of your final payment. Balance (final payment) must be made 15 days prior to departure. Failure to comply with this may result in an automatic cancellation of your reservations and forfeiture of your deposit.

### Accommodation

Bedding varies from hotel to hotel, but the following usually applies:-

Single Occupancy: comprises 1 Queen/1 Twin Bed

Double Occupancy: comprises 1 Queen/King Bed

Twin Occupancy: comprises 2 Single Beds

Triple Occupancy: comprises 3 Single / 1 Double + Rollaway Bed

If a rollaway bed is required, an extra charge applies. Most hotels will not put more than one rollaway in a room. Baby cots can be requested in advance and if extra charge applies, passenger must pay directly to hotel.

**Gratuities:** US\$6 per person per day for driver and guide.

**Hotel Check-In/Out Times :** Standard check-in time is after 1500hrs and check-out is before 1100hrs

### Amendment Charges

An administrative fee of RM100 will be charged for each subsequent amendment made after the confirmation. Any other cost arising from the amendment will be borne by the passenger. No amendment can be made within 15 days prior to departure. A change on the entire booking is considered a cancellation and is subject to cancellation charges.

### Cancellation Charges

You may cancel your booking at any time. Cancellation must be made in writing to avoid any misunderstanding. If your cancellation is received by the Company more than 30 days prior to your departure, an administration fee of RM100 per person will be levied. If your notice of cancellation is received fewer than 30 days prior to departure, the following cancellation charges will apply:

### Cancellation Received Cancellation Fee

Between 29 to 16 days prior to departure: Forfeiture of the Deposit

Between 15 to 08 days prior to departure: 50% of tour price

Between 7 days to departure day (No-Show): 100% of tour price

### Refund

No refund will be made for unused tickets or any other unutilized portion of the inclusions. Request for refund as a result of changes to the package must be made in writing and an administrative fee of RM100 per person applies in addition to the supplier's cancellation fee. Refunds are payable only through the original booking agent.

### General Information

The company reserves the right to substitute or alter similarly-priced accommodation, services and itineraries when necessary and there shall be no refund in such situation.

### Responsibility

The company acts only as an agent and does not manage, control or operate any suppliers of services. The Company assumes no liability for any loss, injury, damage, accident, delay or irregularity which may be caused by these events – Acts of God, natural disasters, civil & military disorders, industrial disputes and any cause beyond the reasonable control of any company or person engaged in carrying out the arrangements made.

### Reservations

All reservations are subject to space availability and confirmation.

### Customer's Responsibilities

- Travel Insurance – to cover medical expenses arising through illness or accident prior to or during the holiday, and loss of the holiday and loss of holiday monies, cancellation or curtailment of holiday for insurable reasons.
- Passport & Visas – to be in possession of a valid passport and whatever necessary immigration documentation may be required by the country(ies) for the duration of the holiday.

### Visa Application

Tourist visa is not required for Malaysian passport for a stay up to 30days.