



Borobudur Temple

INDONESIA

FROM RM **1180**pp

VALIDITY 2018 – 2019
APR – MAR

PRIVATE TOUR

- Price Per Person in RM
- Daily Departure
- Minimum 02 Adults
- Land Tour Package Only

PRICE INCLUSIONS

- ✓ Return transfer airport-hotel
- ✓ 3Nights accommodation with daily breakfast
- ✓ Lunch & dinner at local restaurant
- ✓ Sightseeing as specified in the itinerary with English speaking local guide
- ✓ Gratuities to guide & driver

PRICE EXCLUSIONS

- ✗ Airfare & applicable airport taxes
- ✗ Personal Incidental Expenses
- ✗ Optional Tours

REMARKS

- ❖ Tour prices and itinerary quoted are subject to change
- ❖ Valid for **Malaysian Passport Holder Only**
- ❖ Peak season surcharge may apply (To be advised upon booking)
- ❖ Subject to room availability
- ❖ No refund for un-utilized tours or services
- ❖ Terms & Conditions Apply

VISA

Tourist visa not required for Malaysia passport holder for a stay up to 90days

TRAVEL INSURANCE

Travel Insurance provider:
AIG Malaysia Insurance Berhad

HOTEL (or similar class)	ADULT		CHILD [2-11YRS]	
	Twin/ Triple	Single	Extra Bed	No Bed
3★ Hotel Neo+ Awana / 4★ The 101 Yogyakarta Tugu	1180	1530	1010	780
4★ Novotel Yogyakarta	1330	1850	1150	880
5★ Melia Purosani / Royal Ambarrukmo Yogyakarta	1370	1890	1170	900

Jun17 - Jul03, 2018 & Dec23, 2018 – Jan02, 2019 – Surcharge to be advised

DAY ITINERARY

- 01 JOGJAKARTA – ARRIVAL (Lunch/Dinner)**
Arrival at Jogjakarta airport, meet by tour guide at the arrival gate. After lunch, proceed to **Prambanan Temple** (UNESCO World Heritage Site) – a ninth century Hindu temple compound in Central Java. After tour, transfer to hotel for check-in. In evening, enjoy local dinner and watch the **Ramayana Ballet Cultural Show**.
- 02 JOGJAKARTA (Breakfast/Lunch/Dinner)**
Mount Merapi Volcano (By 4x4 Jeep) & Borobudur Temple (UNESCO) Tour
Visit **Museum Ullen Sentalu**, a Javanese culture and art museum. Continue to **Desa Wisata Petung** at Kaliadem Village. Journey to **Mount Merapi Volcano** by 4x4 jeep, visit **The Lost World Castle**, **Relic Museum 'Sisahartaku'**, **The mysterious Alien Stone** and admire the panoramic view of **Mount Merapi volcano** at Bunker Kaliadem and **Desa Wisata Kinahrejo Village**. After lunch, transfer to **Borobudur Temple**, one of Seven Wonders of The World Buddhist temple built in 9th century, **Mendut Temples**. After dinner, transfer back to Jogjakarta
- 03 JOGJAKARTA (Breakfast/Lunch/Dinner)**
Visit **Sultanate Palace**, the magnificent palace of Kraton of Jogjakarta. Next to **Taman Sari** (Water Castle) a site of a former royal garden of the Sultanate of Yogyakarta, traditional **batik home industry**. After lunch, enjoy shopping at **Beringharjo Market** at Malioboro Street. Taste the **Luwak Coffee** at Mataram Coffee Factory. Continue proceed to **Parangtritis Beach** and enjoy the sunset. Transfer back to hotel.
- 04 JOGJAKARTA - DEPARTURE (Breakfast)**
Depart Jogjakarta, transfer to airport.

HOTEL DESCRIPTION (for guideline only)



HOTEL NEO + AWANA - 3★

Jl. Mayjend Sutoyo No.52, Mantrijeron, Kota Yogyakarta, Daerah Istimewa Yogyakarta 55143, Indonesia

Tel: +62 274 4580111

<https://www.neohotels.com/en/hotel/view/21/hotel-neo--awana-yogyakarta>

296 rooms. Located a 10-minute walk from the historic Keraton Ngayogyakarta Hadiningrat Palace. A 20-minute drive to the famed Beringharjo Market and about a 15-minute drive to Malioboro Street.



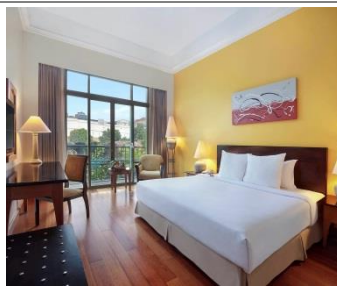
THE 101 YOGYAKARTA TUGU - 4★

Jalan Margo Utomo No.103, Gowongan, Jetis, Kota Yogyakarta, Daerah Istimewa Yogyakarta 55233, Indonesia

Tel: +62 22 20521000

<http://phm-hotels.com/the101hotels/hotel/yogyakartatugu/>

105 rooms. Located a 5-minute stroll from Malioboro Street. A 3-minute walk from Tugu Monument, a 10-minute drive from Jogjakarta Palace.



NOVOTEL YOGJAKARTA - 4★

Jl. Jend. Sudirman No.89, Terban, Gondokusuman, Kota Yogyakarta, Daerah Istimewa Yogyakarta 55223, Indonesia

Tel: +62 274 580930

<https://www.accorhotels.com/gb/hotel-0777-novotel-yogyakarta/index.shtml>

202 rooms. Tugu Railway Station is 1 km from Yogyakarta Novotel, while Gembira Loka Zoo is 4.5 km away. Adisucipto International Airport is 7.7 km from the property.



MELIA PUROSANI - 5★

Jalan Mayor Suryotomo No.31, Ngupasan, Gondomanan, Kota Yogyakarta, Daerah Istimewa Yogyakarta 55122, Indonesia

Tel: +62 274 589521

<https://www.melia.com/en/hotels/indonesia/java/melia-purosani/index.html>

280 rooms. Located in the heart of Yogyakarta, alongside the Jalan Malioboro shopping centre. 1 km. from the Sultan's Palace.



ROYAL AMBARRUKMO - 5★

Jalan Laksda Adisucipto No.81, Caturtunggal, Kecamatan Depok, Kabupaten Sleman, Daerah Istimewa Yogyakarta 55281.

Tel: +62 274 488488

<http://www.royalambarrukmo.com/>

247 rooms It is less than 10 minutes from Adisucipto International Airport, and most of Yogyakarta's must-see sites – the Prambanan Temple, Sultan Palace, Kotagede, Malioboro – are a short drive away.

TERMS & CONDITIONS

Passengers are deemed to have read, understood and accepted the following:-

Package Price

Quoted and payment in Ringgit Malaysia (RM). Validity of prices is seasonal and subject to change without prior notice. Child rates are applicable when child are occupying a room with at least two adult.

Deposit & Payment

A deposit of RM 200 per person is required when booking is made (subject to change based on travel dates). Receipt for deposit is valid for three (3) months from the date of issued. The deposit forms part of your final payment. Balance (final payment) must be made 30 days prior to departure (subject to confirmation of tour package). Failure to comply with this may result in an automatic cancellation of your reservations and forfeiture of your deposit.

Accommodation

Bedding various from hotel to hotel, but the following usually apply:-

Single – consist 1 Queen Bed

Double – consist 1 Queen/King Bed

Twin – consist 2 Single Beds

Triple – consist 1 Double Bed & 1 rollaway bed / 3 Single beds

If a rollaway bed is required, extra charge applies. Most hotels will not put more than one rollaway in a room. Baby cots can be requested in advance and if extra charge applies, passenger must pay directly to hotel.

Hotel Check In/Out Times

Standard check in time is after 1500hrs and check out is before 1100hrs.

Amendment Charges

An administrative fee of RM100 will be charged for each subsequent amendment made after the confirmation. Any other cost arising from the amendment will be borne by the passenger. No amendment can be made within 30 days prior to departure. A change on the entire booking is considered as a cancellation and is subject to cancellation charges.

Cancellation Charges

You may cancel your booking at any time. Cancellation must be made in writing to avoid any misunderstanding. If your cancellation is received by the Company more than 30 days prior to your departure, an administration fee of 15% of tour price per person will be levied. If your notice of cancellation is received less than 30 days prior to departure, the following cancellation charges will apply.

Cancellation Received Cancellation Fee

Between 29 to 16 days prior to departure: 25% of tour price

Between 15 to 08 days prior to departure: 50% of tour price

Between 7 to departure day (No-Show): 100% of tour price

Refund

No refund will be made for unused tickets or any other unutilized portion of the inclusions. Request for refund as a result of changes to the package must make in writing and an administrative fee of RM100 per person applies in additional to the supplier's cancellation fee. Refunds are payable only through the original booking agent.

General Information

The company reserves the right to substitute or alter similarly priced accommodation, services and itineraries when necessary and there shall be no refund in such situation.

Responsibility

The company acts only as an agent and does not manage or control or operate any suppliers of services. The Company assumes no liability for any loss, injury, damage, accident, delay or irregularity which may cause by these events - Acts of God, natural disasters, civil & military disorders, industrial disputes and any cause beyond the reasonable control of any company or person engaged in carrying out the arrangements made.

Reservations

All reservations are subject to space availability and confirmation.

Customer's Responsibilities

- Travel Insurance - a coverage to cover medical expenses arising through illness or accident prior to or during the holiday and loss of the holiday and loss of holiday monies cancellation or curtailment of holiday for insurable reasons.
- Passport & Visas - to be in possession of a valid passport and whatever necessary immigration documentation may be required by the country (ies) for the duration of the holiday. Passport must have minimum validity of at least six [6] months from the date of your return to Malaysia.

Visa

Tourist visa is not required for Malaysian passport for a stay up to 90days.