



Anghong Marine National Park

## THAILAND

FROM RM **550**pp

**VALIDITY** 2018 – 2019  
**NOV – MAR**

### SEAT-IN-COACH TOUR

- Price Per Person in RM
- Daily Departure
- Minimum 02 Adults
- Land Tour Package Only

### PRICE INCLUSIONS

- ✓ Return coach transfer airport-hotel-airport
- ✓ 2Nights stay at your selected hotel with daily breakfast
- ✓ Seat-in-coach tour as specified in the itinerary with English speaking driver cum guide

### PRICE EXCLUSIONS

- ✗ Airfare & applicable airport Taxes
- ✗ Personal Incidental Expenses
- ✗ Gratuities to driver & guide - recommended THB100 per person per day, pay directly

### REMARKS

- ❖ Tour prices and itinerary quoted are subject to change
- ❖ Valid for **Malaysian passport holder** only
- ❖ Peak season surcharge may apply (To be advised upon booking)
- ❖ Subject to room availability
- ❖ No refund for un-utilized tours or services
- ❖ Terms & Conditions Apply

### VISA

Tourist visa not required for Malaysia passport holder for a stay up to 30days

### TRAVEL INSURANCE

**AIG** Travel Insurance provider:  
AIG Malaysia Insurance Berhad

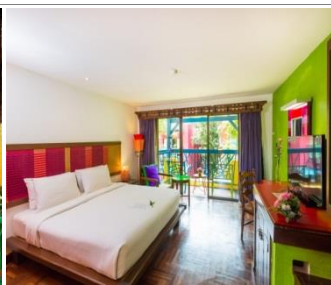
19Nov18/SL

Hotel / Room Type	ADULT		CHILD (2-11Yrs)		Extension Night Per Room Night + Breakfast		
	Twin/ Triple	Single Room	Extra Bed	No Bed	Single/ Twin	Triple	Child No Bed
<b>3★ BAAN SAMUI RESORT - Deluxe Room</b>							
Nov01-Dec23'18	550	1010	450	200	470	700	55
Dec24'18-Jan07'19	890	1680	450	200	810	1210	55
Jan08-Mar31'19	720	1350	450	200	650	975	55
<i>Compulsory Dinner on Dec31 – RM635(Adult) , RM325 (Child)</i>							
<b>4★ SYNERGY SAMUI RESORT - Villa Connect Room</b>							
Nov01-Dec20'18	680	1350	390	190	670	1010	85
Dec21'18-Jan'10'19 <i>(Block-Out: Dec30'18-Jan01'19)</i>	930	1850	390	190	920	1380	85
Jan11-Mar31'19	800	1580	390	190	785	1175	85
<i>Compulsory Dinner on Dec31 – To Be Advised</i>							
<b>5★ MUANG SAMUI SPA RESORT – Grand Deluxe Suite Garden View</b>							
Nov01-Dec23'18	920	1760	660	230	850	1260	65
Dec24'18-Jan10'19	1450	2830	660	230	1390	2080	65
Jan11-Mar31'19	1180	2290	600	230	1105	1655	65
<i>Compulsory Dinner on Dec31 – To Be Advised</i>							
<b>5★ CENTARA GRAND BEACH RESORT – Deluxe Ocean Facing</b>							
Nov01-Dec24'18	1160	2230	420	310	1070	1605	110
Dec25'18-Jan06'19	1910	3690	420	310	1820	2730	110
Jan07-Feb28'19	1650	3210	420	310	1560	2340	110
Mar01-Mar31'19	1650	2660	420	310	1295	1945	110
<i>Compulsory Dinner on Dec31'18 – RM1280 (Adult) / RM335 (Child)</i>							

DAY	ITINERARY
01	<b>KOH SAMUI – ARRIVAL</b> Arrive Koh Samui Airport, meet and greet and transfer to hotel. Rest of the day at leisure.
02	<b>KOH SAMUI</b> (Breakfast) Whole day at leisure or join below optional tours.
03	<b>KOH SAMUI – DEPARTURE</b> (Breakfast) Depart Koh Samui, transfer to airport.

Seat-In-Coach Optional Tours (Must book together with main package)	Adult	Child
F02-Full Day Anghong Marine National Park by Big Boat + Lunch <i>(0715-1700hrs, Block out Date: Nov01-Dec15,2018)</i>	250	200
S02-Full Day 4x4 Off Road Mountain Trip <i>(0800-1600hrs)</i>	270	215
S03-Half Day Exclusive Safari Tour + Lunch <i>(0845-1400hrs)</i>	210	175

## HOTEL DESCRIPTION (for guideline only)



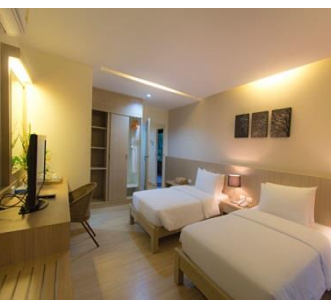
### **BAAN SAMUI RESORT - 3★**

14/7 Moo 2 Chaweng Beach, Koh Samui,, Ko Samui, Surat Thani, Thailand 84320

Tel: +66 77 950531-6

<http://www.baansamuiresort-online.com/>

79 rooms - Located on a private area along Chaweng Beach in Koh Samui, offers rooms steps from the beach. 15-minute drive from Samui Airport and The Thai Boxing Stadium is 500m away.



### **SYNERGY SAMUI RESORT- 4★**

155/3 Moo 2, Chaweng Beach, Koh Samui, Suratthani 84320, Thailand

Tel: +66 77 300 435

<http://www.synergysamui.com/>

30 rooms Located along Chaweng Beach. 5-minute walk from Chaweng Centre. It is a 10-minute drive from Fisherman Village and Big Buddha. 15mins from Samui International Airport



### **MUANG SAMUI SPA RESORT - 5★**

13/1 Moo 2, Chaweng Beach, Bophut, Koh Samui,

Suratthani 84320 Thailand

Tel: +66-77-4297009

<https://www.muangsamui.com/muangsamuisparesort/>

53 rooms - Located centrally and idyllically located on Chaweng Beach. Only a 10-minute drive (4 kms) from Samui International Airport, and 25 kms from Nathon City to access to mainland, Suratthani, by ferry.



### **CENTARA GRAND BEACH RESORT SAMUI - 5★**

38/2 Moo 3, Borpuud, Chaweng Beach, Samui 84320, Thailand

Tel: +66 -77-23 0500

<https://www.centarahotelsresorts.com/centaragrand/csbr/>

203 rooms - Located along Chaweng in Koh Samui, offers sea-facing rooms with private balconies. 20-minute drive from Samui International Airport and Samui ferry pier.

## TERMS & CONDITIONS

Passengers are deemed to have read, understood and accepted the following:-

### Package Price

Quoted and payment in Ringgit Malaysia (RM). Validity of prices is seasonal and subject to change without prior notice. Child rates are applicable when child are occupying a room with at least two adult.

### Deposit & Payment

A deposit of RM 200 per person is required when booking is made (subject to change based on travel dates). Receipt for deposit is valid for three (3) months from the date of issued. The deposit forms part of your final payment. Balance (final payment) must be made 30 days prior to departure (subject to confirmation of tour package). Failure to comply with this may result in an automatic cancellation of your reservations and forfeiture of your deposit.

### Accommodation

Bedding various from hotel to hotel, but the following usually apply:-

Single – consist 1 Queen Bed

Double – consist 1 Queen/King Bed

Twin – consist 2 Single Beds

Triple – consist 1 Double Bed & 1 rollaway bed / 3 Single beds

If a rollaway bed is required, extra charge applies. Most hotels will not put more than one rollaway in a room. Baby cots can be requested in advance and if extra charge applies, passenger must pay directly to hotel.

### Hotel Check In/Out Times

Standard check in time is after 1500hrs and check out is before 1100hrs.

### Amendment Charges

An administrative fee of RM100 will be charged for each subsequent amendment made after the confirmation. Any other cost arising from the amendment will be borne by the passenger. No amendment can be made within 30 days prior to departure. A change on the entire booking is considered as a cancellation and is subject to cancellation charges.

### Cancellation Charges

You may cancel your booking at any time. Cancellation must be made in writing to avoid any misunderstanding. If your cancellation is received by the Company more than 30 days prior to your departure, an administration fee of 15% of tour price per person will be levied. If your notice of cancellation is received less than 30 days prior to departure, the following cancellation charges will apply.

### Cancellation Received Cancellation Fee

Between 29 to 16 days prior to departure: 25% of tour price

Between 15 to 08 days prior to departure: 50% of tour price

Between 7 to departure day (No-Show): 100% of tour price

### Refund

No refund will be made for unused tickets or any other unutilized portion of the inclusions. Request for refund as a result of changes to the package must make in writing and an administrative fee of RM100 per person applies in additional to the supplier's cancellation fee. Refunds are payable only through the original booking agent.

### General Information

The company reserves the right to substitute or alter similarly priced accommodation, services and itineraries when necessary and there shall be no refund in such situation.

### Responsibility

The company acts only as an agent and does not manage or control or operate any suppliers of services. The Company assumes no liability for any loss, injury, damage, accident, delay or irregularity which may cause by these events - Acts of God, natural disasters, civil & military disorders, industrial disputes and any cause beyond the reasonable control of any company or person engaged in carrying out the arrangements made.

### Reservations

All reservations are subject to space availability and confirmation.

### Customer's Responsibilities

- Travel Insurance - a coverage to cover medical expenses arising through illness or accident prior to or during the holiday and loss of the holiday and loss of holiday monies cancellation or curtailment of holiday for insurable reasons.
- Passport & Visas - to be in possession of a valid passport and whatever necessary immigration documentation may be required by the country (ies) for the duration of the holiday. Passport must have minimum validity of at least six [6] months from the date of your return to Malaysia.

### Visa

Tourist visa is not required for Malaysian passport for a stay up to 30days.