



FROM RM **690** pp

VALIDITY 2019 – 2020
OCT01 – JAN02

- Price Per Person in RM
- Daily Departure
- Minimum 02 Adults
- Land Tour Package Only

PRICE INCLUSIONS

- ✓ Return airport–hotel transfers by shuttle (🚗)
- ✓ 2 nights hotel accommodation
- ✓ Complimentary half day Seat-In-Coach Hong Kong City Tour with Bilingual speaking guide
- ✓ Gratuities to driver & guide
- ✖ **No transfer provided for**
 - Arrival flight after 2300hrs and Departure flights before 0730hrs
 - Own Extension stay guests
- ✓ Typhoon signal no. 8 is hoisted

PRICE EXCLUSIONS

- ✖ Airfare & applicable airport taxes
- ✖ Personal Incidental Expenses

REMARKS

- ❖ Tour prices and itinerary quoted are subject to change
- ❖ Peak season surcharge may apply (To be advised upon booking)
- ❖ Subject to room availability
- ❖ No refund for un-utilized tours or services
- ❖ Terms & Conditions Apply

VISA

Tourist visa is not required for Malaysian passport for a stay up to 90days

TRAVEL INSURANCE

AIG Travel Insurance provider:
AIG Malaysia Insurance Berhad

Hotel (or similar)	ADULT / CHILD (3-11Yrs)		Child No Bed	EXTENSION NIGHT Per Room (Room only)		Peak Day Surcharge Per Room Night	
	Twin/ Triple	Single		Single/ Twin	Triple	(A)	(B)
4*METROPARK MONGKOK							
Oct01 – Dec19'19	690	1350	200	570	850	260	400
Dec02'19 – Jan02'20	1050	2050	200	920	1200		
<i>FRI & SAT Surcharge: RM140 Per Room Night</i>							
4*STANFORD HONG KONG							
Oct01 – Dec19'19	770	1500	200	650	930	300	460
Dec02'19 – Jan02'20	1130	2200	200	990	1280		
<i>FRI & SAT Surcharge : RM170 Per Room Night</i>							
4*THE KOWLOON / 4*PARK / 4* STANFORD HILLVIEW							
Oct01 – Dec19'19	850	1630	200	700	1000	350	460
Dec02'19 – Jan02'20	1260	2480	200	1130	1420		
<i>FRI & SAT Surcharge : RM170 Per Room Night</i>							
Peak Day Dates: (No FRI & SAT surcharge)							
(A) Oct01-06, 11-15, 18-22, 25-29; Nov06-09, 12-16,2019							
(B) Dec30,2019 – Jan01,2020							

Hong Kong Disneyland Hotels rates, refer to page 2

DAY	ITINERARY
01	HONG KONG – ARRIVAL Arrive Hong Kong, after custom clearances proceed to Exit B to meet our representative at pole '11' for shuttle transfer to hotel. Shuttle bus schedule From Airport: 0930hrs to 2300hrs (Depart every 30-50mins)
02	HONG KONG Half day Hong Kong Island City Seat-In-Coach Tour Mid Level of Victoria Peak, Aberdeen Fishing Village (exclude sampan ride), Jewellery Factory / Accessories Outlet & Group Photo. Tour dismiss at Tsim Sha Tsui area.
03	HONG KONG - DEPARTURE Depart Hong Kong, shuttle transfer to airport. Shuttle bus schedule From Hotel : 0730hrs to 2130hrs (Min. 3hrs before flight departure)

SEAT-IN-COACH OPTIONAL TOURS (Must book together with main package)	ADULT	CHILD [3-11Yrs]
Hong Kong Disneyland Day Tour [Include return hotel transfer + 1 Day Park Ticket] <i># Hong Kong Disneyland Hotels stay, refer rates on page2</i>	455	420
Ocean Park Day Tour [Include one way hotel transfer + entrance ticket]	265	230
Macau Day Tour with Lunch [Include return hotel transfer, round trip ferry ticket]	545	520 [1-9Yrs]

#HONG KONG DISNEYLAND HOTELS	Per Room Night for 2 Guest - Room Only	
DATES	STANDARD	SEAVIEW
DISNEY'S HOLLYWOOD HOTEL		
Oct01-05; Nov02; Dec21-23	1730	2080
Oct06,18; Nov03	1270	1550
Oct07-10, 13-17	1070	1250
Oct11,25; Nov08,15	1350	1660
Oct12, 19, 26; Nov09, 16, 22, 29	1460	1770
Oct20-24; Nov04-07, 10-14	1130	1350
Oct27-31; Nov17-21, 24-28	1200	1450
Nov01,23, Nov30-Dec02, 06-07, 14, 20	1590	1900
Dec03-05, 08-13, 15-19	1430	1730
DISNEY'S EXPLORERS LODGE		
Oct01-05; Nov01,23,30; Dec06-07,14,20	1780	2110
Oct06,11; Nov08	1480	1750
Oct07-09,13-17, 20-24, 27-31; Nov04-07	1260	1450
Oct10; Nov10-14	1330	1550
Oct12, 19,26; Nov09, 16, 22, 29	1650	1950
Oct18, 25; Nov03, 17-21, 24-28	1410	1660
Nov02; Dec22-23	1950	2290
Nov15	1550	1860
Dec01-05, 08-13, 15-19	1610	1920
Dec21	1780	2290
HONG KONG DISNEYLAND HOTEL		
Oct01-05; Dec21-23	2290	2550
Oct06; Nov08, 15	1770	1980
Oct07-10, 14-17, 20-24, 27-31; Nov04-07	1520	1700
Oct11, 13, 18, 25; Nov17-21, 24-28	1660	1880
Oct12, 19, 26; Nov01, 09, 16, 22, 29	1990	2250
Nov02, 23, 30; Dec06-07, 14, 20	2120	2370
Nov03, 10-14	1580	1760
Dec01-05, 08-13, 15-19	1950	2200
<p>Maximum Room Capacity – 4 Guest 3rd & 4th Adults – surcharge RM 135 Per Person Per Night (Room only) Child (3-11yrs) share existing bed with 2adults– free of charge (Maximum 2 Children)</p> <p>Block-Out Dates: Dec24, 2019 – Jan02,2020</p>		

Hong Kong Disneyland Park Ticket

No. of Days	Adult	Child (3-11Yrs)
1 Day	RM365	RM 275
2 Days	RM465	RM 345

Hotel Description (for guideline only)

**STANFORD HOTEL HONG KONG - 3★**

香港仕德福酒店

118 Soy Street, Mongkok, Kowloon, Hong Kong

Tel: 852- 2781 1881 / Fax: 852- 2388 3733

<https://www.stanfordhongkong.com>

194rooms - Situated beside Ladies' Market, 10mins walk to Mongkok East Station, free shuttle services to Hung Hom MTR Station.

**METROPARK MONGKOK - 4★**

香港旺角維景酒店

Lai Chi Kok Rd, Mong Kok, Hong Kong

Tel: +852 2397 6683

<http://www.metroparkhotelmongkok.com/>

430rooms - Located from the Ladies Market and Sai Yeung Choi Street are less than a 10-minute walk away.

**STANFORD HILLVIEW - 4★**

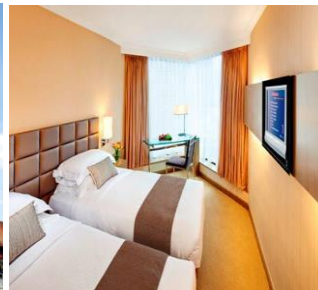
香港仕德福山景酒店

13-17 Observatory Road on Knutsford Terrace, Tsim Sha Tsui, Kowloon, HK

Tel: +852-27227822

<https://www.stanfordhotels.com.hk/hillview/>

178 Rooms – Located within 1 km of Kowloon Park and Temple Street Night Market. Tsim Sha Tsui MTR Station is merely 8 minutes' walk away.

**THE KOWLOON HOTEL - 4★**

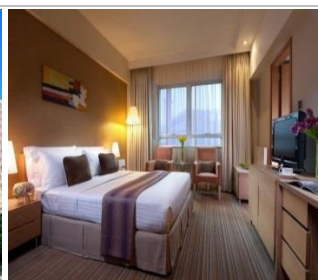
九龍酒店

19-21 Nathan Road Tsimshatsui, Kowloon Hong Kong

Tel: (852) 2929 2888

<https://www.harbour-plaza.com/kowloon/Index-en.htm>

736 room – Located at the centre of Nathan Road shopping paradise and is directly connected to MTR Tsim Sha Tsui Station. 7-minute walk from Star Ferry Pier.

**PARK HOTEL - 4★**

香港百樂酒店

61 – 65 Chatham Road South, Tsimshatsui, Kowloon, Hong Kong Tel: Tel:

Tel: +852-2731 2100

<http://www.parkhotelgroup.com/hongkong>

430rooms - Located only a 5-minute walk from Tsim Sha Tsui MTR Station and Miramar Shopping Centre. 10-minute drive to the Kowloon Station, hile a 3- storey shopping arcade is right next to the hotel.

TERMS & CONDITIONS

Passengers are deemed to have read, understood and accepted the following:-

Package Price

Quoted in Ringgit Malaysia (RM) and subject to exchange rate fluctuations. Validity of prices is seasonal and subject to change without prior notice. Child rates are applicable when child is occupying a room with at least two adults.

Deposit & Payment

A deposit of RM200 per person is required when booking is made. Receipt for deposit is valid for three (3) months from the date of issue. The deposit forms part of your final payment. Balance (final payment) must be made 15 days prior to departure. Failure to comply with this may result in an automatic cancellation of your reservations and forfeiture of your deposit.

Accommodation

Bedding varies from hotel to hotel, but the following usually applies:-

Single Occupancy: comprises 1 Queen/1 Twin Bed

Double Occupancy: comprises 1 Queen/King Bed

Twin Occupancy: comprises 2 Single Beds

Triple Occupancy: comprises 3 Single / 1 Double + Rollaway Bed

If a rollaway bed is required, an extra charge applies. Most hotels will not put more than one rollaway in a room. Baby cots can be requested in advance and if extra charge applies, passenger must pay directly to hotel.

Hotel Check-In/Out Times : Standard check-in time is after 1500hrs and check-out is before 1100hrs

Amendment Charges

An administrative fee of RM100 will be charged for each subsequent amendment made after the confirmation. Any other cost arising from the amendment will be borne by the passenger. No amendment can be made within 15 days prior to departure. A change on the entire booking is considered a cancellation and is subject to cancellation charges.

Cancellation Charges

You may cancel your booking at any time. Cancellation must be made in writing to avoid any misunderstanding. If your cancellation is received by the Company more than 30 days prior to your departure, an administration fee of RM100 per person will be levied. If your notice of cancellation is received fewer than 30 days prior to departure, the following cancellation charges will apply:

Cancellation Received Cancellation Fee

Between 29 to 16 days prior to departure: Forfeiture of the Deposit

Between 15 to 08 days prior to departure: 50% of tour price

Between 7 days to departure day (No-Show): 100% of tour price

Refund

No refund will be made for unused tickets or any other unutilized portion of the inclusions. Request for refund as a result of changes to the package must be made in writing and an administrative fee of RM100 per person applies in addition to the supplier's cancellation fee. Refunds are payable only through the original booking agent.

General Information

The company reserves the right to substitute or alter similarly-priced accommodation, services and itineraries when necessary and there shall be no refund in such situation.

Responsibility

The company acts only as an agent and does not manage, control or operate any suppliers of services. The Company assumes no liability for any loss, injury, damage, accident, delay or irregularity which may be caused by these events – Acts of God, natural disasters, civil & military disorders, industrial disputes and any cause beyond the reasonable control of any company or person engaged in carrying out the arrangements made.

Reservations

All reservations are subject to space availability and confirmation.

Customer's Responsibilities

- Travel Insurance – to cover medical expenses arising through illness or accident prior to or during the holiday, and loss of the holiday and loss of holiday monies, cancellation or curtailment of holiday for insurable reasons.
- Passport & Visas – to be in possession of a valid passport and whatever necessary immigration documentation may be required by the country(ies) for the duration of the holiday.

Visa Application

Tourist visa is not required for Malaysian passport for a stay up to 90days.