

Promotional Price

Last Booking Date
1st Dec, 2008

5D4N ASIA CRUISE ex Port Kelang

Onboard *Legend Of the Seas*
(Port Kelang/Singapore/Penang/Kuala Lumpur)

Special Sailing Date: Dec10,2008



Sailing Only

Price Inclusions:

- ◆ 4-nights on board Legend of the Seas with shipboard accommodations
- ◆ All meals and entertainment onboard

Price Exclusions:

- Port Taxes & Surcharge
- Shore excursion and gratuities on land during ports of call
- Items of a personal nature
- Specialty restaurant fees, some beverages, photographs, medical services, etc
- Cruise Care Vacation Protection Plan

Price Per Person in US\$ (Adult / Child)

Sailing Date	Interior K	Ocean View G	Balcony D1	3 rd / 4 th Guests	Port Taxes & Surcharges
Dec10	USD 375	USD 450	USD 675	N/A	Taxes & Fees – USD88 Gratuities – USD40 Fuel Surcharge – USD40

Day	Port of Call	Arrive	Depart
01	Kuala Lumpur (Port Kelang), Malaysia	Set Sail	10.00pm
02	Cruising At Sea	-	-
03	Singapore	8.00am	4.00pm
04	Penang	2.00pm	9.00pm
05	Kuala Lumpur (Port Kelang), Malaysia	10.00am	Disembark

Tour Prices Include:

- 4-nights Asia Cruise onboard *Legend of the Seas* (70,000 tons) with shipboard accommodations
- All meals and entertainment onboard

Tour Prices Exclude:

- ✘ Shore excursion and gratuities on land during ports of call
- ✘ Taxes & Fees, Gratuities and Fuel Surcharge as indicated above

Terms & Conditions:

- ❖ Cruise price quoted is in US Dollars per person based on twin share basis.
- ❖ Current US Dollars exchange rate is 3.7 and subject to fluctuations
- ❖ Full payment upon confirmation. All other cancellation penalties are governed by the "Booking Conditions" of Royal Caribbean Cruises International brochure.
- ❖ These promotional prices are based on current system availability and subjected to change.

Cancellation Charges:

- ❖ 14-8Days : 50% of total price
- ❖ 7 days or less : No refund plus documentation fee – RM100 per person

5D4N ASIA CRUISE ex Port Kelang

Onboard Legend Of the Seas
(Port Kelang/Singapore/Penang/Kuala Lumpur)
Special Sailing Date: Dec 10, 2008



Sailing Only

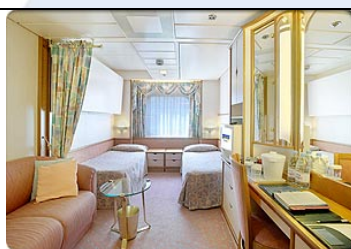
Ship Information:

- Length : 264m
- Beam: 32m
- Draft : 8m
- 11 deck
- Passenger Capacity : 2076
- Gross Tonnage : 70,000 tons
- Speed: 25knots
- Electric Current: 110/220A



Interior Stateroom K

Two twin beds (convertible to queen-size bed) 138sq.ft.
Private bathroom with shower, vanity area and hairdryer
Sitting area with sofa
Television, radio and telephone



Ocean View Stateroom G

- View of the ocean
- Two twin beds (convertible to queen-size bed) 154sq.ft.
- Private bathroom with shower, vanity area and hairdryer
- Sitting area with sofa
- Television, radio and telephone



Superior Balcony Stateroom D1

- Private balcony with a breathtaking view of the ocean (193sq.ft, balcony 38sq.ft.)
- Private bathroom with shower, vanity area and hairdryer
- Sitting area with sofa
- Television, radio and telephone

Please note: Oceanview staterooms 2000, 2002, 2004, 2006, 2500, 2502, 2504, 2506, 2600, & 2602 on deck 2 have a porthole instead of a window. Staterooms 6120 & 6624 have obstructed views

FACILITIES

MEALS	FITNESS CENTRE & SPA
<p>There is a wide choice of onboard dining options available:</p> <ul style="list-style-type: none"> • Fine dining in the main dining room • Casual dining, and buffet-style restaurants • Pizza parlour and ice cream bar • Midnight Delight snack service or midnight buffet • 24-hour complimentary room service • Free flow of iced water, tea, coffee and lemonade 	<p>Our ShipShape® Fitness Centre features some of the most advanced gymnasium equipment at sea</p> <ul style="list-style-type: none"> • Stair-steppers, stationary bikes treadmills and free weights • Elliptical machines • Specialized aerobic and yoga classes* * a charge may be made for some classes • Sauna, Jacuzzi and steamroom
ENTERTAINMENT & ACTIVITIES	KIDS & TEENS PROGRAMME
<p>Most onboard entertainment is free and includes:</p> <ul style="list-style-type: none"> • Performances of contemporary musical stage productions • Live music and comedy shows • Lectures and demonstrations • Casino RoyaleSM • Rock-climbing walls • Solarium, indoor pool, outdoor swimming pools & 4 whirlpools • 9-hole miniature golf course 	<p>From toddlers to teenagers, our Adventure Ocean® Youth Programme is unrivalled for kids.</p> <ul style="list-style-type: none"> • Age-appropriate activities for seven age groups: 6-18 months, 18-36months, 3-5yrs, 6-8yrs, 9-11yrs, 12-14yrs and 15-17yrs • Activity Centre on board • Teen Centre including games arcade and lounge area • Activities include: Adventure Science, Adventure Art, Sport tournaments, heme parties and more

Note : The Above information are for references only and subject to change